

Oklahoma Route 66 Association, Inc.



223 E 3rd., Chandler, Oklahoma 74834

(405)258-0008

Volume 8, No. 2 NEWSLETTER May 1996

President's Corner by Joe Kisicki

Well, here we go again, a new president. Ron has done a great job of holding everything together for the last three years. I only hope I can keep us on track to become the great organization that our founders envisioned back in 1989.

I've been working on my three goals that you read about in the last newsletter. Increasing communication, increasing membership, and seeking corporate support have taken up most of my time - and phone bill! To date, I have met with Senators Leftwich and Littlefield about the bridge in Miami, and have sent letters to all senators and representatives on the Transportation and Tourism and Recreation committees of both the House and Senate. I've also visited the corporate offices of Phillips 66, Sonic, AT&T, Southwestern Bell, 7-Eleven, and Braums. No one has thrown me out yet and some have even been encouraging. Time will tell.

Somewhere in this newsletter is a small fragment of a much longer poem that I think captures what some of us see in and on Route 66. The poet is Vachel Lindsay, a troubadour who roamed this part of the world back in 1912. He wrote this poem "The Santa Fe Trail" while sitting on a milestone by the side of the road in Kansas. Around 1912 it was popular to put a pennant on your car so people knew your home town. Most of Lindsay's poems are for the ear, not the eye, and should be read aloud. He often wrote directions for the reading style out along side the verse. For this one he has "Like a train caller in a Union Station." What better way to watch the United States go by.

Our Association could use someone like Lindsay today. He preached beauty and campaigned against ugliness. He said "ugliness is a kind of mis-government." He was born in

1879 and died in 1931, six years before a brand new bridge over the Neosho River began to carry Route 66 traffic. If he only knew what things would come and go in this century! In our ongoing effort to save the bridge in Miami, we have composed a letter that we urge you to use. Just sign it, fold it, tape or staple it shut, put a stamp on it, and mail it. Or you could use the basic information to compose your own letter. Or you could white out Littlefield's name and re-address it, sending it to anyone you think might be of some help in our effort.

Our first cruise is coming up soon and I hope that everyone is making plans to participate. I'll be the guy in the "OLD BLUE" Dodge Convertible, so please stop by to say hi, and let me know how things are on your part of the Route.

P.S. Wouldn't it be great if we all had pennants with our hometown on it for the cruise?

(Poem located by Joe Kisicki)

On each snapping pennant A big black name:
The careering city Whence each car came.
They tour from Memphis, Atlanta, Savannah,
Tallahassee and Texarkana.
They tour from St. Louis, Columbus, Manistee,
They tour from Peoria, Davenport, Kankakee.
Cars from Concord, Niagara, Boston,
Cars from Topeka, Emporia, and Austin.
Cars from Chicago, Hannibal, Cairo.
Cars from Alton, Oswego, Toledo.
Cars from Buffalo, Kokomo, Delphi,
Cars from Lodi, Carmi, Loami.
Ho for Kansas, land that restores us
When houses choke us, and great books bore us!
While I watch the highroad and look at the sky,
while I watch the clouds in amazing grandeur
Roll their legions without rain over the blistering
Kansas plain while I sit by the milestone
and watch the sky, The United States Goes By

Oklahoma Route 66 Association, Inc.



223 E 3rd., Chandler, Oklahoma 74834
(405)258-0008

Volume 8, No. 2 NEWSLETTER May 1996

WHY SAVE THE MIAMI BRIDGE?

by Kathy Anderson
Photos by Joe Kisicki

Why all the fuss about the old steel through truss bridge over the Neosho River? What makes it so special that many Route 66 and preservation associations are lobbying so hard to save it? Two reasons - scenic value and history.

Children love bridges. There is something magical about traveling over one. Being suspended so high in the air, seeing an enchanted world of wood and water from a bird's eye view, wondering what adventures might lie around the next bend...it all sets a child's imagination on fire. As adults, we too find going over bridges a traveler's delight. They break the sameness of the horizon, offering refreshing glimpses of other less traveled pathways like sparkling waters that wind through green shadowed banks..well, face it. For those of us who like to travel, we are still children at heart. Bridges are fun. And bridges are scenic - either for the view they offer or for their own intrinsic appearance - like the old art deco 11th Street Bridge in Tulsa. Coming upon a steel truss bridge is even more of a traveler's delight. As the girders rise up around you, it's like entering your own personal time machine as the sun and shadows stream through the metal framework, dappling the car in hypnotic succession.

Only 25 to 30 steel truss bridges were ever built on Oklahoma Route 66. The Oklahoma Department of Transportation stopped constructing them in late '50's early '60's. Styles ranged from the simple one truss to the thirty eight trusses of the Pony Bridge to the elaborate high or through truss which had an overhead structure. Today, just 17 steel truss bridges remain and only 5 locations still have through truss bridges. One is near Sayre by I-

40's exit 26. Another is in Oklahoma City over Lake Overholser. It's now closed and facing an uncertain future. Then there is the brick-decked Rock Creek bridge outside of Sapulpa, the two bridges over the Verdigris River, and finally the bridge over the Neosho River at Miami. So, as you can see the distinctive through truss bridge is one to be savored and saved. Tourists don't travel Route 66 to see the ordinary. They come to experience the unique. And the yellow through truss bridge in Miami is certainly that.

The second reason we should save the bridge is for its historic value. In 1922, 13.33 miles of nine-foot wide pavement were laid down between Miami and Afton. It was made of concrete base and covered with a rock asphalt surface. This is what we know today as the "Sidewalk " or "Scotch" Highway. In 1926, this nine-foot road became a part of Route 66. Understandably, it was NOT a popular stretch for motorists. In 1937, a twenty-foot wide replacement was built, which included the steel through truss bridge over the Neosho River. On September 13, 1937, a huge dedication ceremony was held on the east end of the bridge. Hundreds and hundreds of people were present some had come from as far as Tulsa, even neighboring states, to witness the event. Mac Bartlett (Past President of the Highway 66 Association and editor of the Miami News Record newspaper), Al Commons (Miami's member of the State Highway Commission) and Governor E.W. Marland each gave one sentence speeches. Then using giant wooden scissors that were a foot bigger than the sidewalk highway, the red, white, and blue ribbon was cut. Miami had become " the gateway to the Southwest for Transcontinental traffic, " eliminating the last gap of non-standard paving on Oklahoma Route 66. Folks, you just can't get much more historic than that.

Now you know what the fuss is all about. The bridge is definitely worth saving. So sign the

Oklahoma Route 66 Association, Inc.



223 E 3rd., Chandler, Oklahoma 74834
(405)258-0008

Volume 8, No. 2 NEWSLETTER May 1996

form letter or write your own. Then dig out a 32 cent stamp and put the letter in the mail today. The politicians won't help us if they don't hear from you. Thanks.

STEEL TRUSS BRIDGE LOCATIONS

The following is a list of the 17 steel truss bridges we have been able to locate along Route 66 - both old and new alignments. Have we missed any?

East to West

Through Truss over the Neosho River in Miami.
Single truss over Little Cabin Creek east of Vinita.

Single truss on the westbound lanes on the east side of Chelsea.

Two through trusses over the Verdigris River.
Through truss over Rock Creek on old alignment just west of Sapulpa.

Single truss by cemetery on old alignment just north of Bristow

Single truss on old alignment fragment east of Stroud.

Single truss over Captain Creek by Wellston.

Single truss on 66"B" in Wellston.

Through truss over Lake Overholser on old alignment

Pony bridge.

Single truss between Bridgeport and Hydro.

Single truss just east of Hydro, just east of the Texaco station.

Single truss just west of Lucille's.

Single truss after jog over I-40 and east of Cherokee Trading Post at exit 71 east of Clinton

Through truss over Timber Creek east of Sayre between two jogs over I-40 near exit 26.

The Arcadian Inn Bed and Breakfast



328 E. First
Edmond, OK 73034

(405) 348-6347
1-800-299-6347

James E. Walden Haynes, Jr.
PRESIDENT, CEO



RO-SIX, INC.

J & J MERCHANTS, INC.

3810 NW 39TH EXPRESSWAY
OKLAHOMA CITY, OK 73112-2960

OFF. 405/946-3966
FAX 405/946-2932



223 East Third
Chandler, OK 74834

RE: Oklahoma Department of Transportation; Project MABRF58B-261, Structure #58140126X, Ottawa County

Senator Littlefield,

The above bridge project over the Neosho River along U.S. Highways 59 and 69 in Miami, Oklahoma is a historic section of old U.S. Route 66. Since the Joint Resolution in 1989 which directed the Department of Tourism and Recreation, the Department of Transportation, the Oklahoma Historical Society, and the Oklahoma Department of Commerce to designate Old U.S. Route 66 as a historic route, many of us have been investing a lot of time and effort in the preservation of this Road.

In 1937, the Miami bridge was opened with a ribbon cutting ceremony that was attended by the governor and a large contingent of other dignitaries from around the state. The crowd of over a thousand people were told that this new "gateway to the southwest" would remove the last barrier impeding traffic in the state of Oklahoma. This new bridge and the 13.8 miles of new twenty-foot roadbed replaced the original nine-foot wide pavement built by the highway department back in 1918, which zigzagged between Miami and Afton.

This year, as we celebrate the 70th anniversary of Historic Route 66, it is ironic that the Oklahoma Department of Transportation should see fit to demolish this "old bridge", as they put it. Especially since somewhere along the line, someone within the governmental structure neglected to include this bridge in a survey conducted to pinpoint historic bridges. Shouldn't we wait until the State of Oklahoma has had time to develop its Scenic Byways Program before we eliminate any more of Oklahoma's picturesque history?

The development of the Scenic Byways Program is currently underway and is expected to be completed within twelve months. I would hope that by then the Department of Transportation, with your help, could develop an alternative for the bridge that would fit into the Scenic Byways Program. Without your intervention, as it stands now, the bridge will be destroyed in July.

Bit by bit, landmarks along Oklahoma Route 66 are being destroyed. The classic steel truss bridges seem especially vulnerable to the wrecking ball. Perhaps we can't save them all (especially if they are unsafe), but given the historical background of the bridge in Miami and its structural soundness, surely we should make the extra effort for this one.

Respectfully,

**Route 66
Counties**

Ottawa
Craig
Rogers
Tulsa
Creek
Lincoln
Oklahoma
Canadian
Caddo
Blaine
Custer
Washita
Beckham

Oklahoma Route 66 Association, Inc.



223 E 3rd., Chandler, Oklahoma 74834
(405)258-0008

Volume 8, No. 2 NEWSLETTER May 1996

Association in the Public Eye

The Oklahoma Route 66 Association is trying to raise its public profile this year by setting up its own booth at several events.

June 1 the Association will have an indoor information booth and sell merchandise at the Rock and Roll benefit concert in Oklahoma City at the State Fair Arena. Over 3500 people are expected to attend! Kathy Anderson, Joe Kisicki, and Ron Burden have indicated their willingness to staff the booth. Other volunteers would be welcome, too. Please contact Joe Kisicki at (405)348-3589 or Ron Burden at (800)392-2274(Days) or (918)377-2961(evenings).

June 15 and 16 is the first anniversary celebration of Darryl Starbird's Hall of Fame Museum, near Afton. The Association has secured permission from Darryl himself to have an information booth outside amidst the 80 acres of food, cars and fun. Volunteers are needed to help with this event. An awning or pop-up canopy would be greatly appreciated, too. Call Donnie Gray at (918)256-2218(days) or Jackie Kreeger at (918)542-6642(days).

Do you know a major event where the Association should have a presence? Call Joe Kisicki or call the Association Office at (405)258-0008.

"THE SPIRIT OF 66" CAR PLAQUE

The association will be awarding "The Spirit of 66" car plaque at several major car shows along the Route this year. Not all shows have been decided on, but here are the ones we know about to date.

May 17-19. Oklahoma City Bricktown. Cruisin' Bricktown Open Car Show, Central Oklahoma Classic Chevy Club.

June 15-16 Afton at Monkey Island. First Anniversary Celebration of Darryl Starbird's Hall of Fame Museum.

September 14 Clinton Park Second Annual Car Show and Route 66 Museum tour and Picnic in the Park Clinton Chamber of Commerce.

A BIT OF OKLAHOMA'S ROUTE 66

by Francis G. Ward, QMC, USN RET.

"Old 66," The peoples' highway, reaching across the U.S.A. from the industrial East, to the golden West.

And for those who have driven through "heartland Oklahoma," the brightest point on the lodestone.

Where many-a-traveler has found cherished memories, and exciting experiences.

This bit of history, this 66, as it makes its way over this Sacred Red Earth, with its ancient past, and tribal glories.

Continuing down this heartland valley, of Central Oklahoma, from Sapulpa to Arcadia.

Like a black ribbon winding its way through rolling hills and grassy plains. Where the Buffalo were once king, and provider for the Warrior-Hunter.

Ever pointing Westward, this great road, where millions have driven on, cycled on, and Olympiads have carried the torch on.

It spans our Soonerland from Sunrise to Sunset. This precious road,
This Mother Road.

Note: Frank Ward's RV camp near Wellston is well known to many travelers along the road - especially because of the authentic Native American Tepees he sets out every summer! This Poem first appeared in one of the Association's 1992 newsletters.

Oklahoma Route 66 Association, Inc.



223 E 3rd., Chandler, Oklahoma 74834

(405)258-0008

Volume 8, No. 2 NEWSLETTER May 1996



The Route 66 World Association based in Elk City, OK, is promoting the Mother Road to Roadies around the world. Its quarterly publication the Route 66 World News, is a 32 page, black and white tabloid which focuses on one of the eight Route 66 States in each issue. Also featured are events and news from Route 66 communities, books and video reviews, museum news, travel tips, endangered sites, poetry and art, attractions on or near Route 66, and recollections of "the good old days". Membership/subscriptions is \$15 per year.

The organization is based in the former Casa Grande Hotel, headquarters for the 1931 National Route 66 Convention. The Casa Grande also houses the Anadarko Basin Museum of Natural History.

Editor Morton Scott has a background in journalism, writes a monthly column for the Elk City Daily News, and produced and hosted the daily program "Tales from the West OK," for KADS Radio. He serves as Beckham County Trustee for the Oklahoma Route 66 Association.

Associate Editor Don Mullenix is a founding member of the OK Route 66 Assn., chaired the Route 66 Roundups in western Oklahoma, and co-chaired the statewide 2nd Oklahoma Route 66 Cruise.

Roving Editor John West is President of the Anadarko Basin Museum, and serves on the Oklahoma Tourism Commission.

A series of incidents in 1993 prompted the trio to form the association; they met with two large European groups touring Route 66, the Mother Road Journal ceased publication, and the National Route 66 Museum was approved for Elk City.

To join/subscribe, contribute information or stories, or to inquire about selling the Route 66 World News, contact: Route 66 World News, 204 N. Main, Elk City, OK, 73644, (405)243-0437, RT66WORLDNEWS@ITLNET.NET

WARWICK TO STROUD - OLYMPIC TORCH ON OKLAHOMA ROUTE 66

Runners on Route 66...shades of Andy Payne and the 1928 Bunion Derby! On Saturday May 18 in the morning, the torch for the Atlanta '96 Olympic games will turn East on Highway 66 just west of Warwick, after coming south on 177 from Stillwater. Runners are expected to carry the torch through Warwick, Chandler, and Davenport., Stroud. it will turn South on 377 and head for Prague. The Association asks that members turn out along the Route with signs and banners to greet the runners. Don't miss this opportunity to extend a warm Oklahoma welcome and see history in the making!! For the exact times, check with local police department.

Oklahoma Route 66 Association, Inc.



223 E 3rd., Chandler, Oklahoma 74834

(405)258-0008

Volume 8, No. 2 NEWSLETTER May 1996

June Cruise Update

Check your oil and fill up the gas tank - the June cruise is almost here! The evening of Friday, May 31 is registration and party time, Saturday June 1 is the cruise itself, and Sunday June 2 is closing ceremonies with lots of fun and games. Unlike cruises held in the last several years, this cruise will have three starting points - Oklahoma City, Sapulpa, and Quapaw, with registration in OKC, Sapulpa, and Miami.

Cruisers wishing to start in Oklahoma City should report to Shepherd Mall to get their cruise packets on Friday from 5 to 7 pm, or Saturday from 8 to 10 am. In Sapulpa, the registration site Friday will be Martha's Corner Park, 100 E. Dewey from 5 to 7 pm. Saturday morning from 9 to 10 am the Sapulpa Main Street Association will take over registration in their offices located at 101 E. Dewey. In Miami, Be-Bop Diner will be the registration site Friday evening from 6 to 8 pm and in Quapaw Saturday at the Dallas Dairyette from 8 to 10am.

The cruise is a poker run this year with participants needing to draw 7 cards and get their passports stamped in 12 towns. It is not necessary to hit all the checkpoints. Since closing ceremonies are now on a separate day, cruisers have all day Saturday to complete the stretch of their choosing. Those starting from OKC will travel east on 66 to Sapulpa. Those starting in Quapaw/KS Border will head west to Sapulpa. And those drivers who begin in Sapulpa can head either direction. Cruisers can then spend the night anywhere along the Route. In OKC, the Comfort Inn Motel at 4017 NW 39th, phone (405)947-0038, is offering a \$45 a night rate (before tax) for 1 to 4 people to registered participants who show their cruise passports. The Ramada at 3535 NW 39th Expressway, Phone (405)947-2351, are offering special rates of \$48 a night (before tax) and.

We urge cruiser to get together for Saturday evening dinner and Sunday morning Breakfast.

Sunday's pace will be very low key, with cruisers turning in their passports at Tilghman Park in Chandler by noon. The Chandler Chamber of Commerce, along with the Association, is planning a variety of events, including a car show, musical entertainment, and games for kids of all ages. Official closing ceremonies will begin at 2pm. Door prizes and awards for winning poker hands form cards drawn along the Route will be given out.

Cruise costs are \$15 per driver for Association Members, \$25 for non-members, and \$20 each for non Association car club members whose club fields at least 5 cars. A special cash prize of \$200 will be given to the car club or motorcycle club with the most participants. Additional passports may be purchased for \$ 10 each. A Pre-registration form is included in this newsletter.

Oklahoma Route 66 Association, Inc.



223 E 3rd., Chandler, Oklahoma 74834
(405)258-0008

Volume 8, No. 2 NEWSLETTER May 1996

ROUTE 66, A GREAT TOURIST POTENTIAL

by Carol Duncan

Vice President - Western Oklahoma

Route 66 is a tourist corridor through Oklahoma. But our state needs to create tourist attractions and build on existing ones. The Route 66 Museum is an excellent quality attraction. The marketing potential for Route 66 is there for the developing.

The "Discover Oklahoma" TV show sponsored a three bus load tour to western Oklahoma on February 29. The list of stops for this tour: Erick, Cal's County Cookin, Western Oklahoma Honey Bee Farm, Cheyenne, Coyote Hills Guest Ranch, Blackettle Museum, Roll Country School, Elk City, Old Town Museum and Display Area, Clinton, Oklahoma Route 66 Museum, PopHicks Restaurant, Southwest Playhouse. Excerpts from the tour were shown on "Discover Oklahoma" Saturday night March 2nd. The trip seemed to be enjoyed by the majority of the travelers.

Route 66 Museum volunteers and employees did a good job of welcoming the tour and showing them around. One advantage of tours is that many people will go back home and tell family and friends about everything they saw and everything they did. Word of mouth is good advertising. Tourism can make an impact on all Route 66 towns.

Oklahoma Granite Sign Welcomes Traverlers

Due to the bad weather on January 31st, the dedication of the first permanent granite border sign was held on April 5. The welcome marker on the Oklahoma/Texas line on I-40 is the first of nine to be placed at the state's most heavily used entry points. Around each marker there will be landscaping and night lights to welcome travelers and returning Okies.

Willis Granite Products and Monument Works of Granite, OK, is producing all nine markers. They have an excellent reputation for quality work. This is the same company doing the granite historical markers on Route 66.

A reception following the dedication ceremony was held at the Tourist Information Center at Erick. Route 66 Association members John West, Morton Scott, and Carol Duncan did their part in promoting tourism in Oklahoma and along Route 66.

Route 66 Museum Seeks Support

Friends of the Route 66 Museum in Clinton have scheduled a membership drive to help provide support of the Museum. Informational mailings will be sent out to existing members and to anyone interested in giving support. Contact Blanche Ross at (405)323-2345, or call the Museum at (405)323-7866 for membership forms and information. Private and non-profit members get one free admission to the Museum per calendar year. Corporations get two free admissions.

Funds from the memberships will be used to purchase Route 66 memorabilia for Museum exhibits and programs. Proceeds from the museum gift shop and from the Friends help pay bills and provide financial support so the Museum will continue to grow.

The costs of annual memberships are :
Individual -\$15. Senior Citizen or Student(18 and under)-\$10. Family- \$25. Non-Profit Clubs-\$50. Corporate - \$100.

Oklahoma Route 66 Association, Inc.



223 E 3rd., Chandler, Oklahoma 74834
(405)258-0008

Volume 8, No. 2 NEWSLETTER May 1996

DONATIONS OF ROUTE 66 BOOKS ARE NEEDED

One of the goals of the Association is to help people to know more about Route 66 and its story. This history and the many human interest stories about the Road need to be readily available for anyone who wants to explore the excitement and adventure of the real America.

To that end, the Oklahoma Route 66 Association county trustees from western Oklahoma want to start a project of donating Route 66 books to community public libraries along the Route in western Oklahoma that do not have any. Progress of this project will be published in upcoming Association newsletters. Donors will be given receipts and recognition for their help.

Send donations or books to: The Oklahoma Route 66 Association Attn: Carol Duncan
223 E. 3rd, Chandler, OK. 74834

THREE COMMON EXCUSES PEOPLE GIVE FOR WHY THEY DON'T WANT TO PARTICIPATE IN A CRUISE

EXCUSE #1: WHY SHOULD I PAY MONEY TO CRUISE A FREE ROAD I CAN DRIVE ANYTIME? Association President Joe Kisicki says, "It's really easy to miss the special sites and sections of the Road unless you know what to look for. Our cruises offer that unique perspective. Cruises also allow people to vie for special prizes and enjoy the company of folks who love the open road. Besides, memberships and cruises are our two primary sources of income. The last two years has seen our job become more urgent as Route 66 landmarks have increasingly become targets for destruction. The more people take part in our fundraising activities, the better we will be able to preserve Route 66 for everybody to enjoy."

EXCUSE #2: BEEN THERE, DONE THAT.

Route 66 in Oklahoma is always changing. The Road you drove three months ago is not the same road it is today. A new business has opened. A mobile home that blocked the view of old motor courts is gone. A cherished old landmark has finally succumbed to the Oklahoma wind. Re-driving Route 66 is like paying a visit to a dear friend and catching up on all the gossip. Truth be told, a "Been There, Done That" person is in too much of a rush to properly enjoy the Mother Road, anyway. We're probably better off without'em.

EXCUSE #3: I DON'T OWN A CLASSIC CAR

Somehow, the general public has decided that unless you are into the car club culture, Route 66 isn't for you. Association Secretary Kathy Anderson says, "I don't own a classic car - I drive a Honda Civic! But that doesn't stop me. Route 66 is more than what you drive, it's who you meet and what you see and experience. Don't deny yourself a great time just because you don't have a classic car!"

SAVE THE WHALE UPDATE

We have been trying to find out the latest on the efforts to save the Blue Whale in Catoosa but have not been able to reach anyone. We'll keep trying.



Oklahoma Route 66 Association, Inc.

223 E 3rd., Chandler, Oklahoma 74834

(405)258-0008

Volume 8, No. 2 NEWSLETTER May 1996

TEXAS MUSEUM NEEDS YOUR HELP

The Devil's Rope Museum in McLean, Texas has established a research library on all of Route 66. Delbert and Ruth Trew (surely you remember their "Grapes of Wrath" truck they like to take to events?) have begun the mindboggling task of cataloging all the Route 66 articles and items they've gathered over the years. As if sifting through the stuff they have so far isn't bad enough, the Trews told us they are still looking for photos or anything printed about Route 66. Items can be vintage or recent, and can deal with any of the eight Route 66 States. With the resurgence of interest in Route 66, we need to save and gather as much information as we can. Maybe one day, this endeavor, combined with other archiving projects, will find its way into a national database about Route 66, available to all on the Internet.

WISH LIST

Every not-for-profit organization publishes a wish list these days, so we decided we would too.

- * New computer, or upgrade/expansion to existing 286
- * Good scanner for above computer.
- * New location for Association office. Rent \$140 or less, nice interior (or capable of being fixed up by volunteer help), fronts on 66 and is visible from both directions, lots of parking, and near a pool of volunteer help.
- * Friendly volunteers to staff the office 6 or 7 days a week from 8:30am to 5 or 6pm.
- * CPA to audit Association books at GREATLY REDUCED (or FREE) prices so we can qualify for grant money.

RAMADA®



ALLAN R. REEVES
Director of Sales & Marketing

RAMADA INN - AIRPORT NW • 3535 NW 39th Expressway
Oklahoma City, OK 73112 • 405-947-2351 • Fax 405-948-7752



Joe Tomlinson

Executive Director

(918) 256-7133

VINITA AREA CHAMBER OF COMMERCE
P.O. BOX 882 VINITA, OK 74301-0882
Phone (918) 256-7133 Fax (918) 256-4780

Oklahoma Route 66 Association, Inc.



223 E 3rd., Chandler, Oklahoma 74834
(405)258-0008

Volume 8, No. 2 NEWSLETTER May 1996

Afton

Gold Mine Antiques
RT. 1, Box 1422
Afton, OK. 74321

Route 66 Cafe
PO Box 601
Route 66
Afton, OK. 74331
918-257-5681

Great Garage Sale
Hwy 60
Afton, OK. 74331
918-540-1480

Buffalo Ranch
Afton, OK. 74331

Town of Afton
PO Box 250
123 South Main Street
Afton, OK. 74331-02
918-257-4303

Arcadia

Arcadia Historical &
Preservation Society
Box 134
Arcadia, OK. 73007
405-396-2398

Mark R. Hakanson,
DDS, Inc.
638 W Duarte Rd. #9
Arcadia, CA. 91007
405-447-2131

Hillbillie's Cafe
P.O. Box 356
Arcadia, OK. 73007
(405)396-8177

Bristow

Bristow Tire & Auto
115 W. 4th
Bristow, OK. 74010

Chandler

Lincoln Motel
740 E 1st
Chandler, OK. 74834

Bud Blakely Lumber Co.
107 W 13th
PO Drawer 99
Chandler, OK. 74834

Claremore

Will Rogers Memorial
Box 157
Att: Joe Carter
Claremore, OK. 74018

J.M. Davis Gun Museum
333 N. Lynn Riggs
P.O. Box 966
Claremore, OK. 74018-09

Clinton

Best Western Trade Winds
2128 Gary Blvd.
Clinton, OK. 73601
405-323-2610

Clinton Chamber Of
Commerce
P.O. Box 1595
Clinton, OK. 73601

Clinton Service Center
601 Gary Blvd.

Clinton, OK. 73601

Pop Hicks Restaurant
223 W. Gary Blvd.
Att: Howard Nichols
Clinton, OK. 73601
405-323-1897

Cottonwood Az

Route 66 Tee-Shirt Co.
P.O. Box 2039 Cot
Cottonwood, AZ. 86326-20
(520)646-0227

Davenport

Central Oklahoma
Telephone Co.
P.O. Box 789
Davenport, OK. 74026

Marketplace Insurance
Agency, Inc
PO Box 310
Davenport, OK. 74026

Town & Country Grocery
PO Box 405
Davenport, OK. 74026

Edmond

Arcadian Inn
328 E. 1st
Edmond, OK. 73034

Edmond Historical Society
431 S. Boulevard
Edmond, OK. 73034

Daylight Donuts of Edmond
PO Box 6176
Edmond, OK. 73083-61
405-330-0143

Oklahoma Route 66 Association, Inc.



223 E 3rd., Chandler, Oklahoma 74834
(405)258-0008

Volume 8, No. 2 NEWSLETTER May 1996

El Reno

Canadian County Museum -
Historic
Society Ben Clark Rifle Club
Box 173A Rt. 1 Country
Club Road
El Reno, OK. 73036

Elk City

Old Route 66 Antique Mall
401 E. 3rd
Elk City, OK. 73644
405-225-9695

Anadarko Basin Museum of
Natural History
107 E. 3rd
Elk City, OK. 73644
405-225-2940

Elk City Travelodge
301 Sleepy Hollow Crt.
Elk City, OK. 73644
(405)243-0152 Fax

Foyil

Top Hat Dairy Bar
PO Box 168
Hwy 66 & 28A
Foyil, OK. 74031
918-341-0477

Hydro

Johnson Peanut Company
Box 62
Hydro, OK. 73048
405-663-2330

Lake Havasu City Az

Route 66 U.S.A.
226 Sunflower
Lake Havasu City, AZ. 86403

602-680-6677

Luther

First Bank & Trust Company
PO Box 480
Luther, OK. 73054
405-277-3211

Woods General Store

PO Box 540
Luther, OK. 73054
405-277-9007

Miami

Pizza Hut Express
101 A, NW
Miami, OK. 74354
918-540-2471

Barb's Daylight Donuts, Inc.
1831 N. Main
Miami, OK. 74354
918-542-5247

Al's Kountry Corner
229 N. Main
Miami, OK. 74354

Pizza Hut of Miami
1320 N. Main
Miami, OK. 74354
918-542-8474

Waylan's Ku-Ku Burger
PO Box 994
915 N. Main
Miami, OK. 74354
918-542-1698

Miami Chamber of
Commerce
PO Box 760
Miami, OK. 74355

Oklahoma City

Maaco Auto Painting &
Bodyworks
8100 N. Rockwell
Oklahoma City, OK. 73132
(405)720-2100

OKC Convention & Visitors
Bureau
123 Park Avenue
Oklahoma City, OK. 73102

Discover Oklahoma, OK
Tourism Dep
500 Will Rogers Memorial
Bldg.
2401 N. Lincoln Blvd.
Oklahoma City, OK. 73105

D & B Nut & Candy Co.
4625 NW 39th Expressway
Oklahoma City, OK. 73122

Antique & Rod Shop
529 SE 59
Oklahoma City, OK. 73129

Larry Upchurch &
Associates
PO Box 82341
Oklahoma City, OK. 73148
405-232-6158

Quapaw

Bank of Quapaw
Att: Joe J. Smith
PO Box 588
Quapaw, OK. 74363
918-674-2263

Dallas Dairyette
101 N. Main
Quapaw, OK. 74363



Oklahoma Route 66 Association, Inc.

223 E 3rd., Chandler, Oklahoma 74834

(405)258-0008

Volume 8, No. 2 NEWSLETTER May 1996

Sapulpa

Simple Simon's
Pizza-Sapulpa
2724 Raintree Cr.
Sapulpa, OK. 74066

Frankoma Pottery
PO Box 789
2400 Frankoma Road
Sapulpa, OK. 74066
918-224-5511

Sapulpa Main Street
101 E. Dewey
Sapulpa, OK. 74066
(918)224-5709

Sayre

The Mike Neff Company
P.O. Box 338
Sayre, OK. 73622
405-928-3351

Springfield Mo

O'Reilly's Auto Parts
P.O. Box 1156
Springfield, MO. 65801
(417)862-2674

Stroud

Clovis Ins. Agency Inc.
Kent and Carolyn Clovis
PO Box 270
Stroud, OK. 74079
918-968-2552

Stroud Chamber Of
Commerce
PO Box 633
Stroud, OK. 74079

Tulsa

Firey Bros. Music

(918)838-9895

Metro Diner
3001 E. 11th
Tulsa, OK. 74104
918-592-2616

Ollies Restaurant
Attn: John Gray
4070 Southwest Blvd.
Tulsa, OK. 74107
918-446-0524

B & R Auto sales &
Salvage
817 North Lewis
Tulsa, OK. 74110
(229)835-2077

Atlas Route 66 One-Stop
4304 E. 11th St.
Tulsa, OK. 74112

Route 66 Diner
402 E. 2nd
Tulsa, OK. 74120
918-587-6662

Lyon's Indian Store
401 E. 11th
Tulsa, ok. 74120
(918)582-6372

Wallis Group
5319 S. Lewis #219
Tulsa, OK. 74105
918-747-2882

Vinita

Vinita Chamber of
Commerce
PO Box 882
Vinita, OK. 74301

402 N. Wilson
Vinita, OK. 74301
918-256-2255

Little Cabin Pecan
Company
Rt 2 Box 22
Vinita, Ok. 74301

Okalhoma State Bank
P.O. Box 278
Vinita, OK. 74301
(918)256-5585

Ripley's Antique Mall
133 S. Wilson
Vinita, OK. 74301
(918)256-5754

Weatherford

Mark Restaurant
601 E. Main
Weatherford, OK. 73096
405-772-6092

Weatherford Chamber of
Commerce
PO Box 729
Room 224, City Hall
Weatherford, OK. 73096
405-772-7744

Nabors Shoe Center
117 W. Main
Weathford, OK. 73096
(405)772-6224

Oklahoma Route 66 Association, Inc.



223 E 3rd., Chandler, Oklahoma 74834
(405)258-0008

Volume 8, No. 2 NEWSLETTER May 1996

Wellston

Ford's Country Store
PO Box 344
326 2nd
Wellston,OK. 74881

Stroud National Bank
PO Box 69
Wellston,OK. 74881

Ward's RV Park
PO Box 477
Wellston,OK. 74881

LINDA'S ROUTE 66 CAFE

AFTON. OKLA.

Cinnamon Rolls

Featuring
STEAK
FOR TWO

Down Home
Cooking

Small Private
Dining Room

Cobblers



Breakfast
Lunch
Dinner

Pies

Cookies

OPEN 7 DAYS

Mon. - Thurs. 6 AM - 10 PM
Fri. - Sat. 24 Hours
Sun. 6 AM - 3 PM

257-5681

5 NORTH EAST FIRST



Oklahoma Route 66 Association, Inc.

223 E 3rd., Chandler, Oklahoma 74834

(405)258-0008

Volume 8, No. 2 NEWSLETTER May 1996

1996 Calendar of Events - happnin' events in Route 66 towns /mid may through August

The information below has been supplied to us by local chamber of Commernces. Does your Route 66 town have a calendar of events? Send us a copy!

- May 16 - 19 Tulsa- Mayfest. In Main Mall, downtown. Arts and crafts, international cuisine, music
- May 17 Elk City - Elk Creek Pow Wow. In Convention Center. Native American dancing, contests, crafts, and food booths.
- May 26 Weatherford - NWOJR Rodeo. For more information call the Weatherford Area Chamber of Commerce at (405)772-7744.
- May 31-June 2 Quapaw/Sapulpa/OKC - annual Oklahoma Route 66 Association's eastern cruise.
- May 31-June 2 Tulsa - Tulsa Pow Wow. Expo Square. Over 100 Tribes.
- June 1 Weatherford - Route 66 16 and under Softball Tournament.
- June 1 Sapulpa - Route 66 Blowout. Sponsored by the Sapulpa Main Street Program (918)224-5709.
- June 13-16 Tulsa - Juneteenth Celebration. Downtown Greenwood District. Jazz, blues, and gospel music festival.
- June 14&15 Sayre- Shortgrass Rodeo. Sayre City Park. For more information call, the Sayre Chamber of Commerce at (405)928-3386
- June 15 Sapulpa - Daring Duck Drop. Fundraiser to improve lake area and encourage visitor use. For more information call the Sapulpa Chamber of Commerce at (918)224-0170.
- June 14-18 Clinton - Great Plains Chautauqua. McLain Rogers Park.
- June 15-16 Afton - Oklahoma Route 66 Association will have booth at the first anniversary celebration of Darryl Starbird's Hall of Fame Museum.
- July 4 Catoosa - Libertyfest. Fireworks and more at Rogers Point State Park on Route 66 just 2 miles North of Catoosa on the Verdigris River. For more information call the Catoosa Chamber of Commerce at (918)266-6042.

Oklahoma Route 66 Association, Inc.



223 E 3rd., Chandler, Oklahoma 74834
(405)258-0008

Volume 8, No. 2 NEWSLETTER May 1996

Calendar of events - continued.

- July 4 Sayre - 4th of July Celebration. Fireworks Display
- July 4 Tulsa - Tulsa's Boom River Celebration. 21st Street Bridge and along the banks of the Arkansas River.
- July 19&20 Weatherford - 6th Annual Heartland Car Cruise/Poker Run.
- July 22-28 Sayre - Grand National Horsemen's Association.
- August 2&3 Sapulpa - SapulpaFest.
- August 2-4 Tulsa - Gateway International Balloon Festival. 41st and 129 E. Ave. at Oxy USA Center. Oklahoma's largest balloon event combined with country fair.
- August 3 Sayre - Junior Rodeo.
- August 9 Tulsa - Inter-Tribal Indian Club of Tulsa Pow Wow of Champions. Expo Square. 35 tribes with more than 400 dancers.
- August 15 Claremore - Anniversary of Will Rogers - Wiley Post fatal plane crash. Will Rogers Memorial.
- August 23-24 Weatherford - IPRA Rodeo.
- August 31-Sept 1 Sapulpa - 6th Annual National Open Treasure Hunt. Creek County Fairgrounds (919)272-1125

cut here=====

Oklahoma Route 66 Association, Inc.

Cruise Entry Form

Is your Membership Current?

_____ Member \$15 _____ Non-Member \$25 _____ Club Driver \$20 QTY. _____ Extra Passports \$10

Name: _____ Date: _____

Address: _____ City: _____ State: _____ Zip: _____

Home Phone: _____ Business Phone: _____ Ext.: _____

Car Club Name if Applicable: _____

Please Note: To help save on postage and handling fees, your cruise packets will be available at the registration check point at the start of the cruise. Please make checks payable to: **Oklahoma Route 66 Association**, 223 E. 3rd., Chandler, OK. 74834, Phone (405)258-0008

Oklahoma Route 66 Association, Inc.



223 E 3rd., Chandler, Oklahoma 74834
(405)258-0008

Volume 8, No. 2 NEWSLETTER May 1996

Report From Eastern Oklahoma

By Don Gray, Vice President, Eastern Oklahoma.

Editor's Note: If you do not know Don, not only is he one of our two vice presidents, he is very actively involved in the pecan industry. Only he could give us this unique perspective of the eastern half of Oklahoma Route 66.

For those of you that haven't driven the eastern half of Oklahoma's Route 66 in awhile, you're missing what we think is the prettiest part of all the highway. As a pecan grower, I'd like to point out some areas of interest.

Leaving from Central Oklahoma heading east, you can't miss the Round Barn at Arcadia. Be sure to tour it - there's always something new to see. One of our better known "old-time" pecan growers is Gordon Couch and his orchard is along the Highway at Luther. In fact, you're now in "Native Pecan Country" all the way to Miami. Watch for the native trees in creek and river bottoms along the way.

Our state office of the Oklahoma Route 66 Association is located in Chandler. We know it's not big enough or staffed full time, but if we could increase our membership and especially get some corporate sponsors, that could certainly be changed.

I like Depew for a couple reasons. First, I started school there at the old Vida Way Country School during the last of the oil field days. Secondly, because my kids thought it was such an unusual name for a town!

Bristow is a very historical town and worth getting to know. It's big to pecan growers, not only for the trees, but because it's also home to Pecan Ag and Equipment, the largest pecan equipment dealer in the state.

Sapulpa, Tulsa and Claremore with all their converging creeks and rivers have a tremendous amount of pecan production and you'll be able to view a lot of the trees along the Highway. Some will not be managed as evidenced by their crowded growth and underbrush. Others will be nicely kept and mowed.

One of the larger and better known orchards is just out of Catoosa past the Navigation Channel. This orchard fell on hard times during the oil bust, but now owned by Mike Spradling. He's turned it

around and increased the size plus planted lots of new little trees. He does not, however, own the retail outlet which is open only in the fall.

The next noticeable pecan orchard is just east of Chelsea where a local insurance man put in a nice improved orchard some years ago.

As far as my family is concerned, the best is just ahead - Vinita. The oldest Oklahoma town on Route 66, it was founded in 1871. Downingville was the legal name for 15 years, in honor of Lewis Downing, chief of the Cherokees. Col. Elias Boudinot of another group of railroaders named it Vinita in honor of his friend, famed Washington D.C. sculptress Vinnie Ream. Vinita is still a railroad town - just try to get through it without being stopped by a train!

More importantly to us, Vinita is home of the Little Cabin Pecan Company, located just east of town and I-44, right on Historic 66. Little in acreage but truly with a reputation as being a showplace - even in Georgia, the largest pecan producing state in the nation. Little Cabin Pecan Company is also unique in the fact that it is the only family owned and operated Pecan and Gift Shop in Oklahoma open 7 days a week from 8am to 6pm. If I'm around, I'll be glad to show you our piece of the old 1926 roadbed and small concrete bridge still remaining. We have a letter from the Oklahoma Department of Transportation to authenticate it.

East of Afton is the old 8 foot paved road. If you've never driven it, do so now. It's an experience you'll want to share with your children and grandchildren. Next is Miami, but you may have to detour to get there since there is road repaving and new bridge construction going on. More on the bridge elsewhere in the newsletter. I do want to point out however, that the Neosho, Grand, and Spring River bottoms in this area are loaded with native pecan trees.

So now you've had a tour of eastern half of Oklahoma Route 66 and experienced what we Northeast Oklahomans calls "Green Country". Be sure to stop in and see us, and visit a spell.

*Like a good neighbor,
State Farm is there.*

WM. KENT CLOVIS, LUTCF
Agent

714 West Fourth Street
P.O. Box 270
Stroud, OK 74079
Off.: (918) 968-2552
Home: (918) 968-2035



STATE FARM INSURANCE COMPANIES
HOME OFFICES: BLOOMINGTON, ILLINOIS



MUSIC & PRO AUDIO

4718 E. 11TH STREET
TULSA, OK 74112
(918) 838-9895
(800) 875-9895

620 E. CHARLES PAGE BLVD.
SAND SPRINGS, OK 74063
(918) 245-7730



LITTLE CABIN PECAN COMPANY
RT 2, BOX 22
VINITA, OKLA. 74301

1-1/2 Mile E. of Vinita on Historic U.S. 66

ROUTE 66 SOUVENIRS

*"Always the Finest Nuts, Candies & Gourmet Foods Or
Gifts For Those Special People"*

Collectibles

**Cruise
Checkpoint**

Free Samples of our
Roasted Pecans

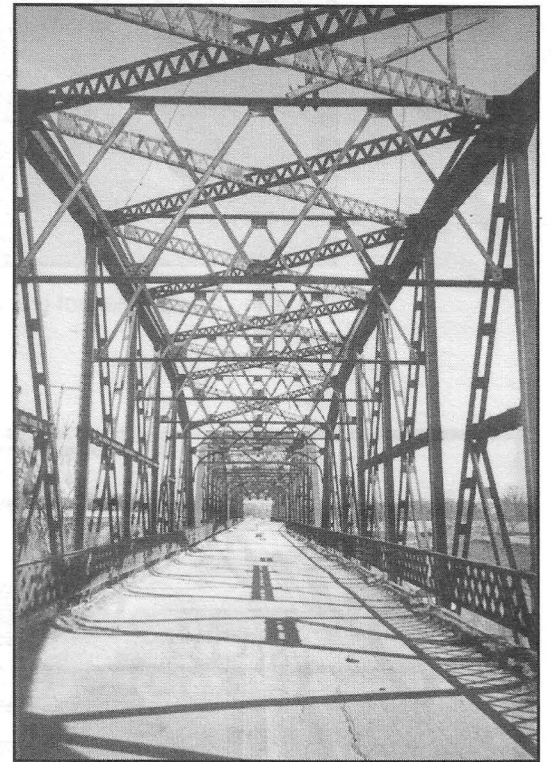
A VERY UNIQUE SHOP
Open 7 Days a Week! 8 a.m. - 6 p.m.



Historic Bridges on Route 66



Lake Overholser Bridge, Oklahoma City. Drivers can no longer take their cars over this early 1920's bridge.

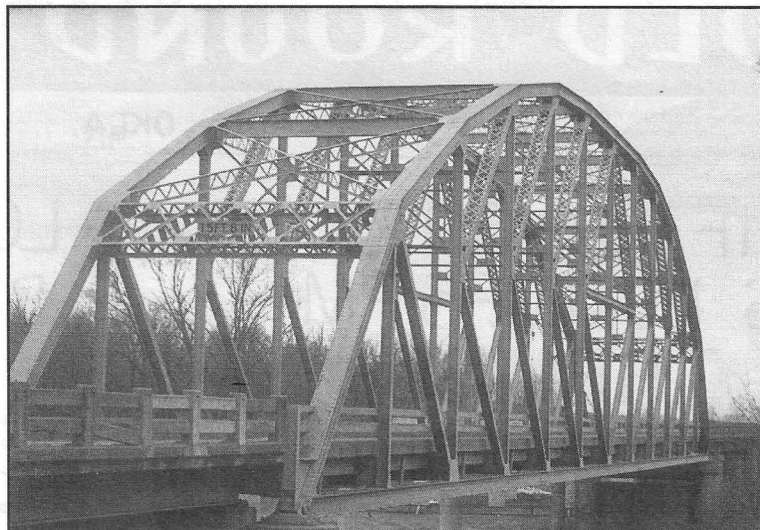


Sun and Shadows. Lake Overholser Bridge, Oklahoma City.



Neosho River Bridge, Miami. New bridge construction to the South side of bridge is already underway.

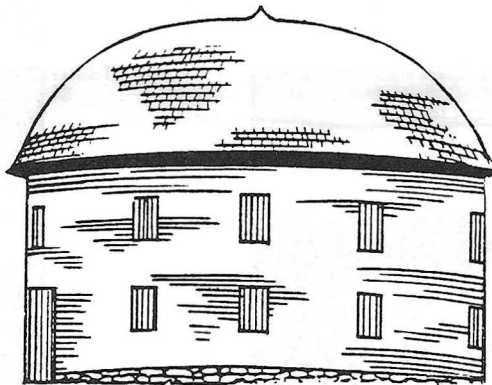
Site of historic ribbon cutting ceremony in 1937.
Neosho River Bridge,
Miami





One of the nine permanent granite markers being installed at main entry points to Oklahoma.

Since
1898



ON ROUTE

66

VISIT THE FAMOUS

OLD ROUND BARN

ARCADIA, OKLA.

GIFT SHOP
HRS 10 AM.-5 PM
TUE. THRU SUN.
CLOSED MON.

LOFT RENTAL
PH. 396-2398
FOR
RESERVATIONS