

Oklahoma Route 66 Association, Inc.



P.O. Box 21382 Oklahoma City, Ok
73156-1382

Volume 8, No. 3 NEWSLETTER August 1996

PRESIDENT'S CORNER by Joe Kisicki

Membership, membership, membership...it seems that is all I do any more, now that we have a P.O. Box in Oklahoma City and have temporarily moved the office to my home. In some respects, it has been good for me. I now have a better grip on just what goes on in the office, but it does seem to be a lot like a full time job.

It's great that so many of you have renewed your membership and I hope that it has been reflected with a new expiration date in your address label. I haven't figured out how to print out a new membership card for you, or how to do the business certificates, but I'm hoping that will all come in time.

Speaking of address labels, take a look at yours. If it is color coded in yellow, your membership may have expired - or is about to expire - or - I have messed up with the computer. If it is underlined in red, this is your third and last newsletter since your membership has expired. We sent out post cards to a lot of delinquent members last April and the response was terrific. Thanks to all of you who responded. If your records do not agree with the computer, please call or drop us a line and let us know. It's easy to fix mistakes but difficult to mend hard feelings. Keep in touch. Our phone number remains the same - (405) 258-0008 - but now rings at my home.

One more thing about memberships, and then I'll change the subject. Postage is our biggest cost and using the bulk mailings is some help. I've heard from our international friends that they get their newsletter about three months late, if they get them at all. So we are going to increase the fee for international membership to \$25.00 to cover first class postage.

If you missed the June cruise, we have a great one planned for September. In June, it was a wet and gloomy Friday night. And it looked like it was going to rain on our cruise all day Saturday, but by ten o'clock it turned into a beautiful day and the more than 35 car loads of us who were ready to brave the weather had a great time. The way the cruise was laid out gave us all plenty of time to shop and spend time inside the check point businesses without worrying about trying to get them all in. The drawback seemed to be that by breaking up the eastern half into four cruises (not to mention having a relatively small turnout due to the weather), you didn't see many of the other cruisers till the closing on Sunday. Like I said, for some of us it was a great cruise. The western cruise has taken all this into consideration, and again, looks great to me.

See you on the Road!

Ward's R.V. Campground

Full Service Hookups

Hwy. 66 - Between the lakes

(Oil Paintings!)



Frank & Elsie Ward
Proprietors

P.O. Box 477
Wellston, OK 74881
(405) 356-2364

SEPTEMBER CRUISE WILL BE A BLAST!

Mark September 13 and 14 on your calendar and plan to join us in Clinton for the Association's Car Rally Fun Run to celebrate the 70th Anniversary of Route 66!

Here's the rundown of events:

Friday, Sept. 13.

12 noon. Anyone who wants to drive to Clinton caravan-style by way of 66 should be at the Comfort Inn on NW39th in OKC before 12. Caravan leaves at 12 sharp!

6-7pm. Preregistration at the Oklahoma Route 66 Museum, 2229 Gary Blvd. in Clinton. Free carton of Coke to each person who registers.

6-9pm. "SOCK HOP" DANCE at the Museum, sponsored by the Oklahoma Route 66 Association, the Museum, and the Friends of the Museum. Contests for costumes (come in your favorite decade!), wildest socks, Spirit of 66 clothes, and door prizes for trivia questions. Free admission for cruise entrants. Michael Wallis and Elvis may drop by for a visit!

Saturday, Sept. 14.

7:30-9am. Dutch treat breakfast at Pop Hicks' at 223 Gary Blvd. Pop Hicks' was established in 1936 - Happy 60th!

8-9:15am. Registration for the Cruise/ Fun Run at McClain Rogers Park by the miniature golf course (S. 10th and Jaycee Lane) for those who did not preregister in advance or on Friday night. Free carton of Coke to each entrant.

9:45am. Cruisers leave Clinton from McClain Rogers Park (S. 10th and Jaycee Lane). We will travel in one or more groups.

NOTE: The Museum will be open at 9 am and the car show participants will be entering the Park at 8 am. So you have time to check out the museum or the car show before leaving on the cruise!

5-5:30pm. Car Rally arrives in Shamrock, TX. Weiner roast in Elmore Park sponsored by the Shamrock Route 66 Association. "Grapes of Wrath" truck will be on display.

5:45pm. Closing ceremonies.

Sunday, Sept. 15.

Optional Sunday morning activity for those deciding to spend the night in Shamrock:

8:30-9:30am. Cruisers meet for breakfast together. Announce picture trivia contest winners and any Association business matters.

If anyone wants to travel 20 miles to McLean, Texas, the Texas Route 66 Museum will be opened for you.

SEPTEMBER CRUISE MOTEL INFO

IN CLINTON:

Glancy Motel, 217 Gary Blvd.
(405) 323-0112.

Rates range from 18.50 plus tax for a one person single bed to 33.00 plus tax for triple beds.

Tradewinds Courtyard Inn, 2128 Gary Blvd. (405)
323-2610, (800) 321-2209.

Rates range from 37.00 plus tax for a one person one queen bed to 42.00 plus tax for two persons two queen beds.

Holiday Inn, 1200 W. Hwy 66.
(800) HOLIDAY.
Single or double 55.00.

Super 8, 1120 W. Hwy 66.

(405) 323-4979, (800) 800-8000.

Rates range from 38.58 (inc. tax) for a one person one queen bed to 53.62 for three persons and two queen beds.

Relax Inn, 1116 W. Hwy 66.
(405) 323-1888.

Rates range from 19.60 plus tax for a one person one queen bed to 27.00 plus tax for a two person two queen beds.

Wink's RV Park/Campground, 1410 Neptune Dr. - Exit 65A off I-40.
(405) 323-1664.



CHANDLER AUTO SUPPLY

TRAY CHANDLER
Manager

GARY ROE
Sales Rep.

607 E. 1st - Chandler, OK 74834
(405) 258-0383
Toll Free 1-800-900-0383

Home (405) 275-7541
Mobile (405) 878-6581

Home (405) 273-0723
Pager (405) 559-9812

IN SHAMROCK, TX:

The Texan Motel, 410 W. Hwy 66.
(806) 256-3244.

Rates range from 24.42 (inc. tax) for a single to 35.60 for a double.

Rambler Motel, 402 E. 12th.
(806) 256-2101.

Rates range from 24.36 (inc. tax) for a single to 32.13 for a double.

Ye Olde Home Place Bed & Breakfast
311 E. 2nd. (806) 256-2295.

Rates range from 30.00 for a single to 50.00 for a double, depending on whether you stay upstairs or down.

Irish Inn, 301 E. I-40.
(806) 256-2106, (800) 528-1234.

Rates range from 42.18 (inc. tax) for a single person single bed to 55.55 for two people two beds.

K & K RV Park, 200 Block W. 12th.

NEW LOOK FOR NEWSLETTER?

With the Association office essentially in no man's land right now, we felt the best way to produce this newsletter, and possibly the one after this, would be for Kathy to output it on her antique Mac, then cut and paste the elements together - the same way the TRIP GUIDE was produced.

We apologize for the old dot-matrix look, but this was the only practical way to handle the situation. After all, it seems pretty silly to type everything into one computer, print it out, then retype it into a second computer in order to produce a newsletter - assuming we even had someone to retype it!

So, until we either get the office situation squared away and receive a donation of a better computer, or Kathy hits the jackpot on all her Route 66 stuff and buys a new hot shot computer for herself (don't anybody hold your breath!), we will continue to follow the time-honored tradition of rulers, scissors, and paste.

ASSOCIATION DONATES TREE TO PARK

In the January 10th issue of the "Clinton Daily News," the public was asked for donations to help replace 30 trees in historic McLain Rogers Park. The trees had become old and diseased and, in Clinton, like everywhere else, there just wasn't enough money to go around without appealing to the public.

McLain Rogers Park was built in the 1930s as a WPA project. It has been listed as a Route 66 landmark and its distinctive gateway has appeared in a number of Route 66 brochures, books, and videos.

In response to the plea for trees, and given the unique 66 character of the Park, the Oklahoma Route 66 Association donated a redbud, our state tree. And since Sally and Don Ferrell, both Association members, had lost their daughter Susan in the April 19, 1995 bombing in Oklahoma City, this redbud was planted in her memory and for all the people in Oklahoma.

The bombing was a despicable, heinous act by individuals who represent the bad in our country. But Oklahomans showed the world that our faith in God and our deep compassion will not let the darkness win. Like the "Survival Tree" which lives on despite the blast, we may bend and lose some branches, but we will not break.



**FLOWERS,
BOOKS,
AND MORE**

IN WELLSTON

(405) 356-9676
1 Block West of Downtown
at 506 W. Second Street
Hours: Mon-Fri: 8-5, Sat: 8-1

**COMPLETE LINE OF
FLORAL SERVICES
NEW AND USED BOOKS
BUY-SELL-TRADE**

**RADIO MARKERS TO ENTICE
INTERSTATE DRIVERS**

The Oklahoma Historical Society and the Oklahoma Department of Transportation will be placing four radio markers along the Oklahoma stretch of I-40 by the end of summer. These markers will promote Oklahoma Route 66 and encourage travelers to get off the interstate and explore the historic road.

Two markers will be on the eastern half of I-40 and two on the western half. Originally, two markers were also going to be along I-44 (through the Turnpike Authority, however, not OHS) but those plans have been shelved, at least temporarily.

Each marker will have a different 2 to 3 minute message, telling listeners about the history of Route 66 in Oklahoma and guiding them to places of interest that are near by. The eastern markers will probably direct people into Oklahoma City Welcome Centers which will have information about Route 66. Western markers, since the Route is so close to I-40, will be more specific.

Signs will be posted several miles outside a radio marker's territory to inform travelers to tune to a specific radio frequency. Regulations prohibit the markers from containing music or advertising. On the plus side, messages can easily be changed to keep the information timely.

This is the first time the State of Oklahoma has tried using radio markers for any purpose other than traffic updates in construction areas. Other states have been using radio markers as historical guides for some time.

ALL U CAN EAT BUFFETS

**KELLYVILLE
STEAK & BBQ**

DINE IN OR CARRY OUT



Tim & Carol Harper
(918) 247-4549
Kellyville, OK 74039

HOMEMADE PIES

Entry form for Car Rally Fun Run

Mail to: Oklahoma Rt. 66 Assn.
P.O. BOX 21382
OKLAHOMA CITY OK.
73156-1382

Name _____
Address _____
City _____ State _____ Zip _____



Entry fees Member \$15.00 Non-Members \$20.00
Entry + Membership for 1 year \$30.00
Extra Passports \$10.00
Total _____

Make Checks/M.O. out to Oklahoma Route 66 Assn.

ELK CITY FUTURE SITE OF NATIONAL 66 MUSEUM

Thursday June 13th was the big day for the ground breaking ceremony for the National Route 66 Museum. The Museum will be located on the Old Town Complex grounds in Elk City on Route 66.

The Museum is being funded by a \$380,000 ISTEA grant and \$80,000 in matching funds from Elk City.

The exterior of the Museum will have facades that show a diner, gas station, garage, fire station, five and dime, hotel, saloon, trading post, cafe, boarding house, and a newspaper office. The interior space will have display cars, a gift shop, and office space.

Bids for construction will be opened in September and the project should be completed by 1997.

Area politicians that attended included: State Representatives Randy Beutler and Jack Bonny, State Senator Gilmer Capps, County Commissioners Joe Paty, Marvin Stewart, and Purcy Walker, Transportation Commissioner Herschal Crow, and Division Engineer Gary Ridley of the Department of Transportation.

The familiar faces of John West, Morton Scott, and Don Mullenix of the Route 66 World News, which has its headquarters in Elk City, were also there.

Jim Buratti, assistant Director of the State Department of Tourism and Recreation and host of the "Discover Oklahoma" television program, spoke at a Rotary Club luncheon after the ceremony.



Route 66 World Association
Route 66 World Association
204 N MAIN

CASA GRANDE HOTEL ON ROUTE 66
ELK CITY OK 73644 U.S.A.
(405) 243-0437
RT66WORLDNEWS@ITLNET.NET

The Route 66 World Association, based in Elk City, OK, is promoting the Mother Road to Roadies around the world. Its quarterly publication, the *Route 66 World News*, is a 32-page, black and white tabloid which focuses on one of the eight Route 66 states in each issue. Also featured are events and news from Route 66 communities, book and video reviews, museum news, travel tips, endangered sites, poetry and art, attractions on or near Route 66, and recollections of "the good old days". Membership/subscription is \$15 per year.

The organization is based in the former Casa Grande Hotel, headquarters for the 1931 National Route 66 Convention. The Casa Grande also houses the Anadarko Basin Museum of Natural History. A series of incidents in 1993 prompted the formation of the association; two large European groups toured Route 66, the *Mother Road Journal* ceased publication, and the National Route 66 Museum was approved for Elk City.

To join/subscribe, contribute information or stories, or to inquire about selling the *Route 66 World News*, contact:
Route 66 World News, 204 N. Main, Elk City, OK, 73644, 405/243-0437, or by E-mail at
RT66WORLDNEWS@ITLNET.NET

Call or write for a free sample copy!

RUN TO THE HEARTLAND PLANS

In case you've forgotten, the big Run to the Heartland 70th Anniversary Route 66 celebration will be held October 11 and 12 in Vega, TX.

There will be a chili cook off, two car shows (Corvette and an open class), a barbeque, raffles, a calf roping contest, and a huge swap meet with lots of Route 66 and automotive items as well as arts and crafts. Live entertainment and lots of Route 66 "celebrities" will also be on hand.

So if you want to get in on all the fun, it's time to finalize your plans. Route 66 author Tom Teague will be speaking in Edmond on Wednesday Oct. 9 at 7 pm. Call the Edmond Historical Society at (405) 340-0078 for the exact location. On Thursday at 12 noon, the Association will caravan out to Vega. If for some reason you cannot leave till Friday or simply cannot get away for the big event, you might want to catch Tom Teague's talk in Elk City on Thursday at 7pm at the Carnegie Library on 221 W. Broadway.

If you are going to the festivities in Vega, here's what you need to do:

First - book your motel room immediately! Call the Comfort Inn in Amarillo at (806) 358-6141 or (800) 628-5013 and ask for De (Dee) Giles (a hard G). Rates are \$45 a night - 1 to 4 occupancy.

Second - If you want to join the Association's caravan out to Vega, the rendezvous point is the Comfort Inn on NW 39th in OKC on Thursday Oct. 10. The caravan leaves at 12 noon so don't be late!

TENTATIVE SCHEDULE OF EVENTS IN VEGA

All events take place in Landergin at the Route 66 Antiques and Museum - Exit 28, I-40 7 miles west of Vega. For more information call the Oldham County Chamber of Commerce at (806) 267-2828 and ask for Joanne Harwell.

FRIDAY OCT. 11:

- 8 am Early registration and set-up of cars, motorcycles, vendors.
- 1-5 pm Vendor displays, Texas Cloggers, Local Entertainment, Route 66 "Old-Timers" Forum.
- 7-10 pm Steinbeck Award Banquet - sponsored by the National Historic Route 66 Federation. Tickets for the chicken fried steak dinner are \$14.50 per person. Make your reservation by calling Joanne Harwell of the Oldham County Chamber of Commerce at (806) 267-2828.

SATURDAY OCT. 12:

- 7:30-9:30am Continued car and motorcycle registration and vendor set-up.
- 10 am Welcome by George Rook, President of the Old Route 66 Association of Texas.
- 10-10:45 am Speech by Michael Wallis, author of Route 66: The Mother Road.
- 12 noon Texas Barbeque Lunch, Big Texan Steak Eating Contest.
- 11 am-5 pm Vendor Displays, Car Show and Judging, Motorcycle Rally, US Postal Service Route 66 Stamp Cancellation, Taste of Texas Display, Texas Round-Up Exhibition, Route 66 Cloggers.
- 3-4 pm Vera Brothers Band.
- 9 pm-1 am Western Dance featuring Vera Brothers Dance.



913 NORTH MAIN
in
MIAMI, OK
TEL 542-1696

QUALITY FAST FOOD RESTAURANT
Speedy Service

with two drive-thru windows
AND INSIDE SOLARIUM SEATING

ROUTE 66 BOOKS FOR LIBRARIES

This year, western Oklahoma Association trustees started a project to place Route 66 books in city public libraries. We have received some donations of books and money, but we need more help. By making Route 66 information available to everyone, more people can find out about "Our Road."

The Association would like to express our thanks to the following donors:

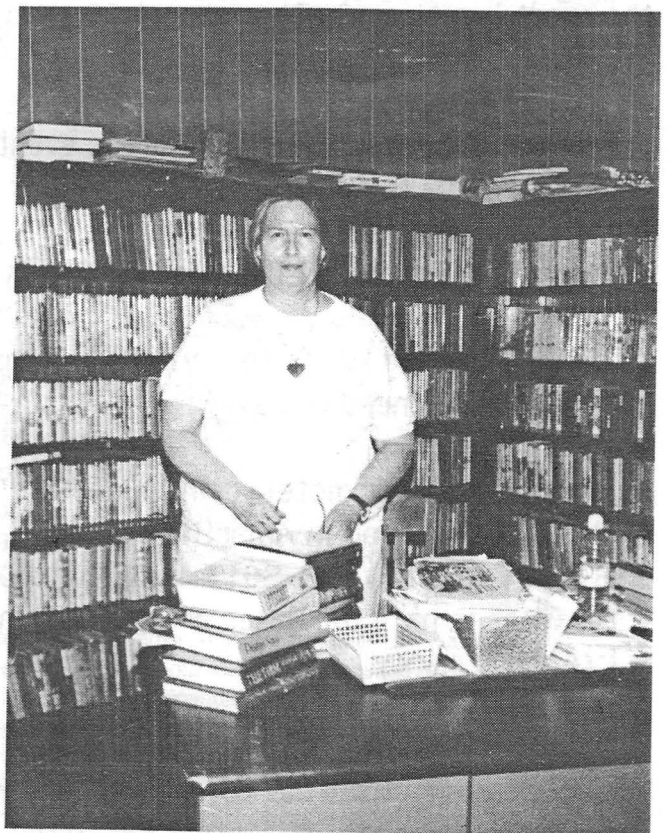
1. Jim Ross (Bethany), author of Oklahoma Route 66: A Cruiser's Companion donated three of his books.
2. Larry Gorshing Family (Clinton) donated \$20.00.
3. 3M Co. (Weatherford) donated \$20.00.
4. Carol Duncan (Clinton) donated two books - Route 66: The Mother Road by Michael Wallis and Route 66 by Scott and Kelly.

The libraries that benefited from the above donations are:

1. Erick Community Library, Darlene Wilson, librarian. This library has known only two locations in 73 years. The first was in a private home for 2 years, and then it moved to its present location on what is now Sheb Wooley Ave. The city of Erick owns the library and gives what financial aid they can for its operation. This year they hope to put in a new heating and cooling system.
2. Sayre Public Library, Stacy Akins, librarian. The present library building was built in 1985. Before then, the library had been in 3 or 4 different locations. The people of Sayre take great pride in their library. It has a large and varied selection of reading and research material. And the microfilm room contains the "Sayre Journal" and "Sayre Record" newspaper issues as far back as 1900.

3. Elk City Carnegie Library, Pat Sprowls and Rita Knop, librarians. In 1912 the first Elk City Library was located in the second story of a building one block east of its present location. An application was sent into the Andrew Carnegie Foundation for endowment funds. \$10,000 in financial aid was approved and the new library was built at 221 W. Broadway in 1915. By 1968, the basement was turned into a youth library, and in 1975 renovations helped expand building size to include additional space.

If you would like to help with this project, send donations or books to the Oklahoma Route 66 Association, Attn. Carol Duncan, P.O. Box 21382, Oklahoma City, OK 73156.



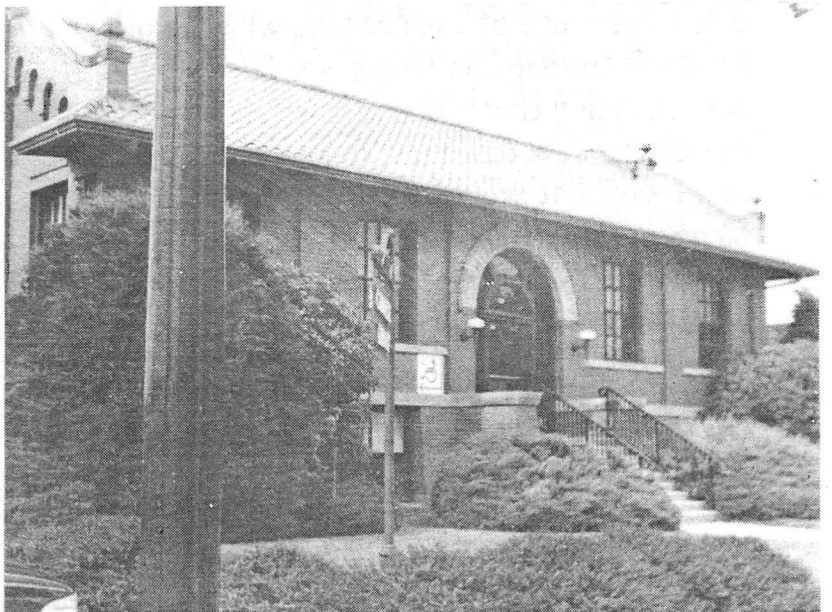
Darlene Wilson
Erick Librarian



Stacy Akins
Sayre Librarian



Pat Spowls
Elk City Librarian



66 BOWL'S LANDMARK SIGN

by Joe Kisicki

The phone rings. It's three o'clock in the morning.

"Mr. Haynes, your sign is down."

"Is it the old one up on the building?"

"No, the big one out front - blown down by the big wind storm. There's damage all over town. Power is out in a lot of places."

"OK, I'll take care of it in the morning."

Jim Haynes is the owner of 66 Bowl located on 39th Street in Oklahoma City. "That sign has to be one of the most photographed signs in the world," he said. "It's been on TV when "48 Hours" was going cross country. A lot of advertisers use it in their ads for some reason. It's even been on the cover of Life Magazine. All morning long, people would stop by and express their sorrow with tears in their eyes and wanting to know what I was going to do now."

Even when Jim showed up at eight that morning, he discovered a group from the Netherlands taking movies of the wreckage out front. It was quite a mess with broken glass from the neon, bent metal, and the old pole snapped right off at the ground. The area was littered with pigeon nests and droppings - one of the reasons why the old lights in the sign no longer worked. As Jim was standing there, one of the former residents flew down and landed on the sign. Jim thought it would make a great picture so he went inside to get his camera. But when he returned, the pigeon had died and was just lying there. Jim took the picture anyway.

He continued to wonder what to do next. The sign had been too old and rundown to have insurance on it, so there would be no help from that source. As bowlers began to come to the alley, Jim started hearing how much they depended on that sign to tell them where to turn in. Others told him how his landmark sign was a homing beacon to Route 66 travelers - a reassurance that they were indeed on the one and only Route 66.

Well, the more people asked about the sign, the more Jim knew that putting it back up was the thing to do. There was no way to resurrect the old one so he got three bids on a replacement sign. But, unfortunately, no one could do it in enamel and steel like the original - too outdated for something that large. The job was finally awarded to Tony Monday from Electrical Displays down on 10th Street. He said he could make one that would work the same way but would use more modern materials.



New 66 Bowl Sign



So today 66 Bowl has our famous landmark back and it's in working order. Bowlers now where to turn. Westbound Route 66 travelers can spot it after they've turned left from May onto the interchange and on over to 39th. Eastbound travelers now know that the heavier traffic of the big city is about to begin and they need to prepare to make the right hand turn onto May after they've crossed the interchange. And travelers at night can now enjoy a neon sign that harkens back to the glory days of road travel.

So next time you are passing the 66 Bowl, stop in and thank them for helping keep Route 66 alive. And while you're in there, take time to bowl a few lanes. Bowling, like Route 66, is full of pleasurable memories, just waiting to be rediscovered.

OKLAHOMA ROUTE 66 ASSOCIATION'S TRIP GUIDE NOW AVAILABLE

The Oklahoma Route 66 Association published its first ever *TRIP GUIDE* just in time for the June cruise. Cruisers received a free copy in their registration packet. September cruisers will also get a copy in their packets.

Printed as a 72-page tabloid, the *Official Oklahoma Route 66 Association Trip Guide* is a county by county exploration of Route 66 through the Sooner State. It contains large-scale maps with directions and blowups to guide travelers through the tricky spots. It is also full of signage information, road facts, roadside highlights, and more. Each town on the Route has its own separate write up - with a town overview, tourist attractions and photo

opportunities, and a selected services directory (lodging, food, gifts). There are also articles on the Oklahoma Route 66 Museum in Clinton, the various satellite exhibits, the new Museum to be located in Elk City, a rundown on other publications dealing with Oklahoma Route 66, and more.

Says Kathy Anderson, editor of the *Trip Guide* and secretary of the Oklahoma Route 66 Association, "You can't follow Oklahoma Route 66 using a standard road map. And there hasn't been any single publication that the Oklahoma Route 66 traveler could turn to in order to find out all the essential Route information. So that's why we created the *Trip Guide*. It contains the basics to safely guide the first time traveler while providing plenty of meat to satisfy the serious road warrior."

Adds Joe Kisicki, Association President, "The *Trip Guide* was developed to help everyone learn more about Oklahoma Route 66 - Oklahomans, out of staters, and overseas visitors alike. We have a lot of wonderful people to meet and unique places to visit along our 400-mile stretch of Mother Road. The *Trip Guide* shows the reader where. We're hoping folks will be inspired to get out there and discover Oklahoma Route 66 for themselves."

The *Trip Guide* is for sale at selected merchants along the Route or can be purchased directly from the Oklahoma Route 66 Association. Cost through the Association is \$4.95 plus \$2.15 for 1st class postage and handling. Send checks or money orders to: The Oklahoma Route 66 Association, Attn: Trip Guide, P.O. Box 21382, Oklahoma City, OK 73156.

MY TRIBUTE TO ANN by Ben Nagel

Editor's Note: Ben and Ann Nagel have been faithful participants in Association cruises. At the annual OHRA Brown Bag Picnic this year, Ben approached the Association about his special plans for this year's Curbside car show to commemorate the recent loss of his wife.

Dear Fellow Car Lovers -

May I take this opportunity to share with you a little of what my dear wife Ann meant to me and all who had the pleasure of knowing her. For me, she was my life. Married almost 16 years, before she was taken from me, we NEVER had an argument. She was so kind and loved life so much.

With her Diet Pepsi in one hand and her ROCK N ROLL music playing, she went about life with much enthusiasm. When someone or something hurt, she hurt, as she cared so much about nature and her fellow humans. She loved animals, plants, and her flowers. When she started something, she went about it 110%. Ann was always willing to help someone else, yet never asked for anything in return or for herself.

Ann continues to help others in death even as in life, for you see she was a DONOR and we have received word of lives being saved and families being able to go on because of Ann.

Now I come to you asking for your help and support. Saturday October 5, 1996 in Beggs OK I will be having my annual CURBSIDE GATHERING. This marks the fifth time we have had the car show and this year is called "CURBSIDE '96: A MEMORIAL TRIBUTE TO ANN NAGEL." Registration is \$10. Awards and prizes will be given. All funds will go to someone who is waiting for


a transplant so they also might live. Please make your plans to come to Beggs and help me do this for someone.


Beggs is on Highway 16, 4 miles west of Highway 75 between Tulsa and Okmulgee. It is also 24 miles east of Bristow. This event is held in conjunction with the Beggs Outhouse Race Day, a fun-filled day for the entire family. For more information, contact me at P.O. Box 539, Beggs OK 74421 or call (918) 257-4815.


A fund has been established: Curbside '96: A Memorial Tribute to Ann Nagel c/o American National Bank, P.O. Box 419, Beggs OK 74421.


Thank you.

STOP IN TO SEE US!
*And Our Route 66 Souvenirs & Video
 Look For The Historic Stone Arches
 Just north of the courthouse right on*


 Chandler Afghan


 Old 66 In Chandler
 heart of Oklahoma &
 Frontier Country.
 Open Mon - Fri


 Gift Shop


 Museum of Pioneer History
 717 Manuel Chandler 405-238-2425
 Hours 9:30 am - 4:00 pm

HAMILTONS SPEED-A-WAY



- CONVENIENCE STORE • DELI
- GAS - DIESEL • CAR WASH

"WELCOME TO STROUD"

803 W. 3rd
Stroud, OK

ASSOCIATION LOOKING FOR NEW HOME

The Oklahoma Route 66 Association has closed the Chandler office. Brian Teters, who has faithfully manned the office whenever he could, has found a full time job. So all mail has now been forwarded to a post office box in Oklahoma City. Phone calls have temporarily been routed to Joe Kisicki's home.

The Association would like to move the office to either Arcadia, Edmond, Oklahoma City or Yukon- thereby still keeping the HQ centrally located yet moving it closer to a larger potential volunteer pool. There are also plans to initiate a number of "official" Association Information Centers at interested businesses and satellite museums. This way, the function of greeting visitors and passing out information could be done along the entire Route.

We will keep you posted as things progress. In the meantime, our permanent new mailing address is P.O. Box 21382, Oklahoma City, OK 73156. We felt that having a permanent post office box would do much to solve the frustrating problem of all the old Association addresses still floating around out there.

AND THERE THEY GO...

Route 66 has seen a **lot** of traffic this summer. About 600 members of the Harley Owners Group (HOGS), led by Oklahoma's own Michael and Suzanne Wallis, roared through in June as did the 28-member (and far quieter) PAC bicycle tour group. A second motorcycle group (all brands, not just Harleys) of about 68 riders took part in the Second Annual Mother Road Ride/Rally®

which was held June 8-13. A small crew from Station WDR - German Public Radio - was also spotted traveling the Route.

Another group of Germans will be traveling the Road in late September. They will be in 20 to 25 "Trabants" (a car made in East Germany, used by the former National People's Army and Borderguards). And, of course, this October, there will be hopefully hundreds and hundreds of cars passing through our state on the way to Vega, Texas - including a group of Model T's!

So, as you travel 66 this year, be on the lookout for our 66 visitors and extend a warm Oklahoma 'howdy' to them.

OVERHOLSER BRIDGE REOPENS TO TRAFFIC

One year ago, things looked pretty grim for the 1920s era "through truss" bridge over the north end of Lake Overholser just west of Bethany. Barriers had gone up and the word was out that the bridge was going to be closed permanently.

Today, we are happy to report that the bridge is once again open to traffic.

City officials said that they closed the bridge because they found 3 beams under a span in the middle of the bridge to be in very poor condition. Deeming the bridge unsafe, they decided to close it down to vehicular traffic.

After receiving a lot of calls from people who wanted the bridge reopened (and probably lots of complaints about the traffic tieups over on the current Route's bridge from people trying to go from one side of the Lake to the other), the Bridge Division of the Special Projects office of the City of Oklahoma City reevaluated the decision. They determined that repairs would not be that expensive if they lowered

the weight limit on the bridge. So they replaced the 3 bad beams and repoured the roadbed in that one central span. Officials feel that the bridge will hold up just fine for another 10 to 12 years before there might possibly be another failure somewhere else in the structure.

So let's hear it for all the people who picked up the telephone and spoke their minds. It proves that just because a bridge has been condemned doesn't mean it isn't fixable at a reasonable cost. Bureaucracies often take the easy way out. It is up to us to make sure they haven't overlooked feasible alternatives.

MARGIE MCCAULEY UPDATE

The last most of us had heard about 67-year old Margie McCauley's remarkable trek along Route 66 by foot last year was that she had had to temporarily call it quits while in Missouri after her faithful canine Lollipop bolted and smashed the supply cart into Margie's leg. She had flown home to California to recover, vowing she would return in 1996, pick up where she left off, and complete her hike to Connecticut to visit her sister.

Recently we've learned that in April of this year, Margie did indeed return to the Road. After finally reaching Chicago, she then got as far as Mansfield, PA. There the cold rains and ever increasing hilly terrain became too much for her, for the supply cart which carried about 75 pounds worth of food and gear, and for her dog whose footpads were becoming too worn. So, she bought a car. A 1979 Ford took her and Lollipop the rest of the way. She then drove back home to California, visiting of many of her Route 66

friends (including our own Carol Duncan!) along the way.

Although Margie has expressed amazement at the abundance of unsought hospitality she received all along her journey, we are the ones who should stand truly amazed. This woman's courage, determination and faith are an extraordinary testament to as to the kind of people that have made our land so great.

NEW INFORMATIONAL BROCHURES BEING PREPARED

Each year, the Oklahoma Route 66 Association handles hundreds of requests for information about Oklahoma Route 66. These requests come from Oklahomans, from people all over the United States, and from foreign tourists too. Each year, the Association has sent out a ragtag collection of odds and ends, none of it very concrete in terms of solid information.

So that's why the Association is preparing two professional-looking black and white brochures. They can be easily photocopied yet will still retain their class. Once we are certain there will be no content changes, we might then print color versions, like many museums and tourist attractions do for their brochures.

The first brochure is a membership brochure. It contains an overview of Oklahoma Route 66 and our Association and includes a membership form.

The second brochure is a product information brochure. If people are truly serious about maps, information, etc. then we are in a unique position to offer them 5 different products - all from right here in Oklahoma! Since none of these products are widely available beyond our state borders,

we have a great opportunity to provide a real service while adding some money to the Association coffers since all these products are available to the Association on consignment. These products are: The Association's own new Trip Guide, Jim Ross' Oklahoma Route 66: The Cruiser's Companion, Ross and McLanahan's Here It Is! The Route 66 Map Series, The Route 66 World News premiere edition on Oklahoma, and the Anderson Productions video Cruisin' Oklahoma 66.

We may even be able to add a 6th one down the line - the upcoming coffee table sized UCO photography book on Oklahoma Route 66.

If people take the time to write to us seeking information, the least we can do is respond with professional-looking items that truly address their needs.

1996 CALENDAR OF EVENTS - happnin' events in OK Route 66 towns mid August through December.

The information below has been supplied to us by local chamber of commerces.
Does your Route 66 town have a calendar of events? Send us a copy!

- | | | |
|---|---|---|
| August 15 Claremore - Anniversary of Will Rogers-Wiley Post fatal plane crash. Will Rogers Memorial. | September 4-8 El Reno - 41st Annual Canadian County Fair. Jenks Simmons Fieldhouse. (405) 262-0683. | September 14 Weatherford - 23rd Annual Festival of the Arts (Fine Arts/Crafts). |
| August 15-17 Bristow - Western Heritage Days and Rodeo. | September 5-7 Tulsa - Chili CookOff and Bluegrass Festival. Downtown Williams Center. (918) 583-2617. | September 14 Yinita - Calf Fry Festival and Dance. |
| August 20-24 Miami - Ottawa County Free Fair. Fairgrounds. (918) 542-1688. | September 7 Sayre - City Wide Garage Sale. | Sept. 14-17 Sapulpa - Creek County Fair. Creek County Fairgrounds. (918) 224-7885. |
| August 23-24 Weatherford - IPRA Rodeo. | Sept. 13-14 Clinton to Shamrock TX - OK Route 66 Association's Annual Western OK Cruise. | Sept. 13-29 OKC - State Fair of Oklahoma. State Fairgrounds - NW 10th and May. |
| Aug. 31-Sept. 1 Sapulpa - 6th Annual National Open Treasure Hunt. Creek County Fairgrounds. (918) 272-1125. | September 14 Clinton - Route 66 Car Show and Festival. (405) 323-2222. | Sept. 21-22 Miami - Designs of Autumn Fall Festival. Includes Route 66 car show. |
| Aug. 31-Sept. 2 Colony - Cheyenne and Arapaho Labor Day Celebration. | September 14 El Reno - Two Rivers Rabbit Show. El Reno Fairgrounds. (405) 262-0683. | Sept. 21-22 Tulsa - Oklahoma Scottish Games and Gathering. Chandler Park at 6500 W. 21st. (918) 241-6399. |
| September 1-2 Bushyhead - Clem McSpadden's Labor Day Pasture Roping and Barrel Race. Hendron Cattle Co. (918) 789-3336. | | September 26 Sapulpa - Sapulpa Arts Soiree. Sponsored by Sapulpa Arts. (918) 224-0170. |

- Sept. 26-Oct. 6 Tulsa - Tulsa State Fair. Expo Center. (918) 744-1113.
- September 28 Sapulpa - Main Street Festival. Sponsored by Sapulpa Main Street Program. (918) 224-5709.
- Sept. 28-29 El Reno - Fort Reno Tombstone Tales. Fort Reno Old Post Cemetery. (405)262-1188.
- October 3-6 OKC - Oktoberfest. Bricktown. (405) 236-8666.
- October 5 Sayre - All Wheels Car Show.
- October 5 Beggs - Ann Nagel Curbside '96 open car show.
- October 9 Edmond - "Searching for 66" author Tom Teague to speak. Call the Edmond Historical Society at (405) 340-0078 for location. 7pm.
- October 9-10 Model T Club of Southern California in Oklahoma traveling 66.
- October 10 Elk City - "Searching for 66" author Tom Teague to speak. Carnegie Library, 221 W. Brdwy, 7pm.
- October 10 Oklahoma cruisers wishing to caravan to the national Run to the Heartland Cruise in Vega, TX should be at the Comfort Inn on NW 39th in OKC by 12 noon.
- October 11-12 Run to the Heartland festivities in Vega, TX.
- October 11-20 OKC - Festival of the Horse. (405) 842-4141.
- October 12-13 Weatherford - Oklahoma High School Rodeo.
- October 14-16 El Reno - Rollin Rockers RY Group. El Reno Fairgrounds. (405) 262-0683.
- October 17-20 Tulsa-Oktoberfest. River West Festival Park. (918) 596-2001.
- October 19-20 OKC - National Children's Cowboy Festival. National Cowboy Hall of Fame.
- October 21-27 Tulsa - PGA Tour Championship at Southern Hills Country Club. (918) 497-4653.
- October 26 El Reno-Shriner's Parade. 10 am. (405)262-1188.
- October 26 El Reno-Downtown Spooktacular Trick or Treat. (405) 262-8888.
- October 26 Tulsa - Tulsa Run. Downtown. (918) 581-8385.
- October 31 Sapulpa - Halloween activities. Sapulpa Main Street. (918) 224-5709.
- October 31 Miami - Boo Ha Ha Parade. Downtown.
- Nov. 3-16 OKC - World Championship Quarter Horse Show. State Fairgrounds - 10th and May.
- November 11 Tulsa - Veteran's Day Parade. Downtown. (918) 584-4274.
- November 11 OKC - Veteran's Day Ceremony. 45th Infantry Division Museum. (405) 424-5393.
- November 11 Clinton - 70th Anniversary commemoration of Route 66. OK Route 66 Museum - details to come.
- Nov. 23-24 El Reno - 4-H and FFA Junior State Poultry Show. El Reno Fairgrounds. (405) 262-0683.
- Nov. 30-Dec. 21 OKC - Stockyards City's Cowboy Christmas. Stockyards City.
- December 2 Weatherford - Christmas Parade.
- December 3 Clinton - Festival of Lights nighttime Christmas Parade and activities. (405) 323-2222.
- December 5 El Reno - Downtown Open House/Tree Lighting and Parade. (405) 262-8888.
- December 5 Miami - Community Christmas Tree Lighting.
- December 7 Tulsa - Christmas Parade of Lights. Downtown. (918)583-2617.
- December 7 Sapulpa - Christmas Parade, 4 pm. (918) 224-0170.
- December 7 Sayre - Christmas Bazaar.
- December 7 Miami - Christmas Parade.
- December 8 Miami - Holiday Home Tour.
- December 12 El Reno - Tour of Homes. 6-8pm. (405)262-1234.
- Dec. 12-30 Tulsa - Zoolightful. Tulsa Zoo. (918) 669-6600.
- December 31 OKC - Opening Night '96. Downtown OKC. (405) 236-1426.

Business Directory

* a list of Association business members in good standing as of July 15, 1996.

When traveling Oklahoma Route 66, please be sure to patronize our business members!

Note: if your business is not listed and your membership is current, please contact the Association so we can correct our files! And if we don't have an address listed for you, give us your street address and we'll be glad to list it so members can find your business.

QUAPAW

Bank of Quapaw
338 Main

MIAMI

**Miami Chamber of
Commerce**
111 N. Main
Waglan's Ku-Ku Burger
915 N. Main

AFTON

Route 66 Cafe
downtown
Town of Afton
123 S. Main

VINITA

First National Bank
KITO Radio - Dave Boyd
402 N. Wilson
Little Cabin Pecan Company
3/4 mile E. of turnpike gate
Oklahoma State Bank
**Yinita Chamber of
Commerce**
104 E. Illinois

CLAREMORE

Will Rogers Memorial
1720 W. Will Rogers Blvd.

TULSA

Atlas Route 66 One-Stop
4304 E. 11th
**Fiery Brothers Music
Store**
4718 E. 11th
Ollie's Restaurant
4070 Southwest Blvd.
Route 66 Diner
402 E. 2nd
The Wallis Group
5319 S. Lewis, #219

SAPULPA

Frankoma Pottery
2400 Frankoma Rd.
Sapulpa Main Street
101 E. Dewey

KELLYVILLE

Kellyville Steak and BBQ
Highway 66

BRISTOW

Something Special
203 S. Main
With Lots of Love
102 N. Main

STROUD

Clovis Insurance Agency
714 W. 4th
Rock Cafe
114 W. Main
Speed Away
803 W. 3rd

DAVENPORT

**Central Oklahoma
Telephone Company**
233 Broadway
**Marketplace Insurance
Agency**
Town and Country Grocery
Broadway & Hwy 66

CHANDLER

Barbour Cox Building
308 W. 8th
Chandler Auto Supply
607 E. 1st
Jack's Deli
501 E. 1st
LaGere and Walkingstick
1006 Manvel
LD's Automotive
Hwy 66 west of town

Lincoln Motel

740 E. 1st
Museum of Pioneer History
719 S. Manvel
**National American
Insurance Co.**
1010 Manvel
PJ's Barbeque
1423 S. Manvel
Sonic Drive-In
816 E. 1st
Granny's Country Kitchen
917 Manvel Ave.

WELLSTON

Ward's RY Park
Hwy 66 west of town
Flowers, Books, and More
506 2nd St.

ARCADIA

**Arcadia Historical and
Preservation Society**
Hwy. 66
Hillbillee's Cafe
Hwy. 66

EDMOND

**Arcadian Inn Bed and
Breakfast**
328 E. First
**Edmond Historical Society
and Museum**
431 S. Blvd.

OKLAHOMA CITY

Comfort Inn
4017 NW 39th
**D & B Nut and Candy
Company**
4625 NW 39th
**Larry Upchurch and
Associates**
**MAACO Auto Painting and
Bodyworks**
offices, 8100 N. Rockwell

EL RENO

Canadian County Museum
300 S. Grand and Wade

CALUMET

**Calumet Chamber of
Commerce**

GEARY

**Canadian Rivers Historical
Society**
115 E. Main

HYDRO

Johnson Peanut Company
Hwy 66

WEATHERFORD

Mark Restaurant
601 E. Main
Nabors Shoe Center
117 W. Main
**Weatherford Chamber of
Commerce**
Room 224, City Hall

ELK CITY

Elk City Travelodge
I-40 & S.H. 34

SAYRE

The Mike Neff Company

OUT OF STATE

Route 66 Tee-Shirt Co.
Cottonwood, AZ

O'Reilly Auto Parts
HQ in Springfield, MO

Mark R. Hakanson, DDS
638 W. Duarte Rd. #9
Arcadia, CA

**MOVIE PEOPLE HELP PROMOTE
OKLAHOMA
AND ROUTE 66
by Carol Duncan**

PART 1 of 2 parts

This spring, excitement rippled its way through the nation just like a tornado through the Oklahoma plains. The movie "Twister" has made quite an impression at the box office. And as everybody knows by now, the movie was shot primarily here in Oklahoma.

The world premiere with all the trimmings was shown in Oklahoma City with a gala party afterwards. Political dignitaries and movie stars were in abundance. Truly a positive public relations moment. We hope the movie producers will come again and make more good family movies in our state. Route 66 would make a good backdrop, don't you think?

Warner Brothers Film Studio was the principal financial backer for the movie "Twister."

Interestingly enough, about 44 years ago in 1952, Warner Bros backed another movie with strong Oklahoma ties called, "The Will Rogers Story." The PR people had the brilliant idea to contact the National Highway 66 Association, then located in Clinton, Oklahoma. Association officers put their heads together with the PR men and organized a promotional tour.

A caravan sponsored by Warner Bros. would start in St. Louis MO on June 23rd and arrive in Santa Monica CA June 30th. Numerous ceremonies would be held along the Route including the dedication of a bronze plaque with a bust of Will Rogers at each state border.

Movie and newsreel photographers, newspaper and magazine reporters, and others would also be a part of the caravan to report on the trip.

The idea of the tour was to promote the movie about Will Rogers which starred Will Rogers Jr. and Jane Wyman. The plaques were paid for by the studio and were to be used to officially name Route 66 as "The Will Rogers Highway."

The Highway 66 Association figured the publicity would increase traffic on the Route by 18%. So the eight states, the Highway 66 Association, Warner Bros., and our favorite Road all stood to gain substantially from this major event.

But this public relations stunt also had some people very puzzled.

The publisher of the "Weatherford News" made the comment in his column in the Thursday June 12, 1952 edition, "While we're pleased with the attention our reliable old U.S. Highway 66 is getting in this month's cross-country dedication tour, we admit to a bit of confusion.

"In ceremonies along the Route the Highway is to be officially dedicated as the Will Rogers Highway, which is very fine...but we have been under the impression for years that it was already the Will Rogers Highway." An interesting opinion since Route 66 had been verbally accepted as the Will Rogers Highway. Apparently this tour made it official on paper.

"The caravan was the highlight of my life," says Gladys Cutberth, wife of Jack Cutberth who was the Executive Secretary of the Highway 66 Association. "They (Warner Bros.) treated us like royalty. We were young then and so excited. The trip didn't tire us."

The opening ceremonies took place at the Chain of Rocks Bridge near St. Louis on June 23rd. One million windshield stickers advertising Highway 66 as the Will Rogers Highway were distributed by Warner Brothers. The Ford Motor Company loaned 5 or 6 new Fords for use on the caravan.

Stops for the tour were tentatively scheduled as follows: KS-MO border on Tuesday June 24 at 2 pm, Will Rogers Memorial Museum in Claremore OK on Wednesday June 25 at 10:30 am, TX-OK border on Thursday June 26 at 3 pm, NM-TX border on Friday June 27 at 2:30 pm, AZ-NM border on Saturday June 28 at 2:30 pm, CA-AZ border on Monday June 30 at 3pm.

Part II in the next issue.



402 E 2nd ~ Tulsa, OK. 74120

Willie Spears

corner of 2nd & Elgin

587-6662

TOWN & COUNTRY

918 Broadway
Davenport, OK 74026
(918) 377-2535

FM
96.1

KITO

AM
1470

Countryopolitan Stereo

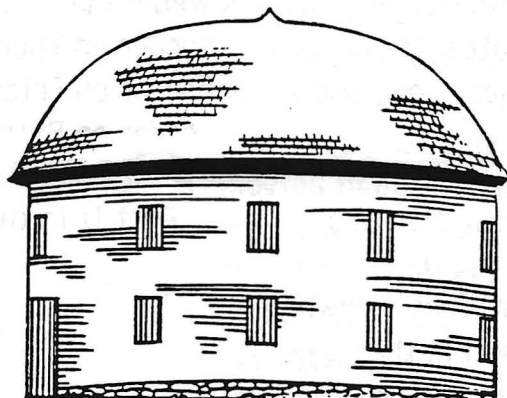


THE ROCK CAFE

114 W. MAIN

STROUD OK.

Since
1898



ON ROUTE

66

VISIT THE FAMOUS

OLD ROUND BARN

ARCADIA, OKLA.

GIFT SHOP
HRS 10 AM.-5 PM
TUE. THRU SUN.
CLOSED MON.

LOFT RENTAL
PH. 396-2398
FOR
RESERVATIONS