

# Oklahoma Route 66 Association, Inc.

P.O. Box 21382 Oklahoma City, Ok. 73156-1382



PHONE 405-258-0008

<http://www.nowka.com/ok66b.html>

*Volume 12, No. 1 NEWSLETTER MARCH, 2000*

## GET READY TO MARK YOUR CALENDARS

**PRESIDENT**  
John Ackenhausen  
5486 So. Boston Ave.  
Tulsa, Ok. 74105

**EASTERN  
VICE-PRESIDENT**  
Don Gray  
P. O. BOX 246  
DISNEY, OK. 74340

**WESTERN  
VICE-PRESIDENT**  
L. V. Baker  
P. O. Box 988  
Elk City, Ok. 73648

**TREASURER**  
Mary Sue Kendall  
2100 Minnesota  
Chickasha, Ok. 73018

**SECRETARY**  
Kathy Anderson  
719 So. Litter Place  
Edmond, Ok. 73034

**EXECUTIVE DIRECTOR**  
Joseph P. Kisicki  
2609 NW 160th Terrace  
Edmond, Ok. 73013

**DIRECTORS**  
Carol Duncan  
Route 1 Box 2033  
Clinton, Ok. 73601

Ron Burden  
110 Forbis Ave.  
Davenport, Ok. 74026

Bill Herron  
1509 Pine oak Dr.  
Edmond OK 73013

Odean Huiatt  
P.O.Box 276  
Hydro, Ok. 73048

Karen R. Lepak  
P.O. Box 276  
Piedmont, Ok. 73034

Bill C. Spurlock  
1521 West Third  
Elk City, Ok. 73647

Jackie Kreeger  
P.O. Box 1247  
Miami, Ok. 74354

Donnie Gray  
Route 2 Box 2  
Vinita, Ok. 74301

The first thing to mark is **Saturday April 15, 2000** the El Reno Cruisers are having a Poker Run. Sign-up at Job's drive-in between noon and 4pm. Call Linda Welliver at 405-262-3876 for more information.

**Adventuretours of McAllen, TX** are gearing up for their Route 66 Vintage RV Tour, which leaves Chicago on May 1<sup>st</sup>. The tour should end May 22<sup>nd</sup>. It is open only to pre-1970 RVs. Due to overwhelming response, the Yellends have added two more tours – but open to all makes of RVs. The eastbound tour from Santa Monica to Chicago leaves May 27<sup>th</sup> and ends Jun 17<sup>th</sup>, then the westbound tour runs June 23<sup>rd</sup> through July 14<sup>th</sup>. For more information, call (800) 455-8687.

**El Reno** is also having it's big **Onion Burger Day, Saturday May 6, 2000**. Call the El Reno Main Street Association at 405-262-8888 for more information.

Then mark the first week-end in June. **THAT'S JUNE 2,3 & 4, 2000**. That's when we will all be in **EL Reno** for the **BIG ROUTE 66 WEEK-END CAR SHOW** this year. Everyone that came last year had a great time even in the 50mph winds. This years plans promise to make it even better than before and the association will be their to have fun and games for everyone that shows up. For you Hot Wheels collectors there will be a lot of fun and surprises call Tom Curtis at 405-262-2949 or 1955 for more information about the Hot Wheels activities. There will also be a "Burn-out" for those who like the smell of burning rubber and the sound of squealing tires. Call Gene Thomas at 405-262-8175 for more information about the "Burn-out". For more information about the Car Show contact the Wellivers at 405-262-3876, they have all the phone numbers for those involved. Don't forget to sign-up for the **Association Scavenger Hunt**. It's a 50/50 this year so the more people involved the more you win. Saturday night is the night for cruising so make sure you plan on staying all day. Bring all your friends.

**Kirk Woodward's Mother Road Ride/Rally** motorcycle tour has opened up for early bird registration at just \$39.95 per bike with no extra charge for a passenger. The 6<sup>th</sup> Annual Ride is scheduled for June 10-17<sup>th</sup>. For more information, contact HHJM at 2024 Heatherbrook Drive, Grapevine, TX 76051. Or call (800) 553-5883.

There will be more information in the next news letter, so be sure to renew your membership to keep informed on what's going on in Oklahoma, on the Mother Road. We are planning a big Labor Day Week-end in Arcadia, and are working on a Cruise and Car Show in Elk City for things to do this fall.

## DRIVE WITH CARE AND ENJOY ROUTE 66

## President's Corner

Here is a big, almost springtime, hello to all you rowdy road warriors. I hope everyone has survived this crazy winter and flu season OK. One piece of sad news, to go along with the rash of restaurant fires we have had, I found out, last week, that another one of our member businesses caught the fire bug. The Launius place, "Something Special", in Bristow, burned down last November. For those of you who can't place "Something Special", it was the arts and crafts place on the south end of main. They have been members for several years and were always one of our checkpoints on the cruises that went through Bristow. "Something Special" is now temporarily located just north across the street from the old place, but Joyce told me they are going to move to a building out on Highway 48. They will still be a member of our association, and I'm sure they will still volunteer to be a checkpoint for us when we need them. Good luck to "Something Special".

Next, I guess I'll talk about the annual meeting held this last January 29<sup>th</sup>, in Arcadia. We discussed the advertising costs for the Trip Guide and decided not to increase prices this year. We talked about what we wanted to do this year, like did we want to plan a cruise or just join in with events already scheduled by communities along 66. I think we decided to join in with the El Reno weekend, the first weekend in June, and the Elk City event sometime in September. There is a tentative plan to try and put on a cruise across most of Frontier Country with the closing ceremonies being held in Arcadia Labor Day weekend. This is just a tentative plan, so if it comes to pass, we will give everybody advance notice through the newsletter about it.

We also talked about what we would like to do in 2001, for the 75<sup>th</sup> anniversary of RT 66. One thing that was discussed was having a plaque made to commemorate the anniversary and then have it carried from Chicago to L.A. via classic cars of, hopefully, members of the different state associations. Sue Kendall is checking on this matter with all the state associations and will give us a run down on it later this year.

Another matter that was discussed was the possibility of holding a big, statewide, cruise-in and car show, but unless we get a lot more volunteers from our ranks, I don't see it happening. We can't seem to

get hardly anybody to come to the meetings, much less volunteer for any extra curricular activities or the many board member positions that need to be filled. If it hadn't been for all the people of Arcadia who turned out for our annual meeting, it would have been a futile gesture. So if you would like to volunteer to help the association out, feel free to call the office and volunteer.

Now I guess I will get down off my soapbox and call this President's Corner officially done. I hope to see all you members out on the road sometime this year. Until then, I bid you all a nice day of getting your kicks on "ROUTE 66".

John Ackenhausen THE PREZ!!

## Coleman Theatre

### Restoring Beautiful Chandelier

The original 20-foot long chandelier is being lovingly restored by a number of Miami volunteers. It was removed in 1959 and kept in a horse barn until recently. From rewiring the center section to polishing the brass, the friends of the Coleman have had their work cut out.

Upcoming events include the Miami Main Street Fashion Show on April 20<sup>th</sup>, "Moon over Buffalo" by the Miami Little Theater April 27<sup>th</sup>-30<sup>th</sup>, "That's Dancing" May 5<sup>th</sup>-6<sup>th</sup>, the Tri-State Men's Barbershop Show May 13<sup>th</sup>, and the Painted Horse War Dance Society Show on May 19<sup>th</sup>.

For more information about the Coleman Theatre Beautiful call (918) 542-6685, ext. 454.

### Rogers County bestows Lynn Riggs Award

The Rogers County Historical Society gave its 1999 Lynn Riggs Award to the late sculptor and artist Willard Stone, whose works included the "Trail of Tears Trilogy," one of which was adopted as the Cherokee Nation logo. The Award is given to an Oklahoman who has shown a deep and lasting commitment to the perpetuation and improvement of the arts in Oklahoma. It is named, of course, after Lynn Riggs, Oklahoma's most famous playwright. Previous recipients include Patti Page, Michael Wallis, and Enoch Kelly Haney.

## **First-ever Route 66 Corridor Act meeting held in Oklahoma City**

By Kathy Anderson

On February 24<sup>th</sup> and 25<sup>th</sup>, around 30 Route 66ers and preservation folks (with a few odd ones thrown in for good measure) met with National Park Service representatives to begin thrashing out how best to implement the Route 66 Corridor Act that was signed into law in August 1999. One person who signed up to attend but did not come was someone from the Office of Senator Inhofe. This was unfortunate as we quickly found out.

As you are probably aware, when the Act was passed, no monies were budgeted for the year 2000. Well, as it turns out, no money has been put into the 2001 budget either – but there is time to correct this oversight but only if we act swiftly. We need every Association member to write his or her Senator and Representative in Washington, urging them to fund the program they passed in order to help save businesses along Route 66. We feel that Representative Heather Wilson and Senator Pete Domenici of New Mexico, so instrumental in getting the original legislation passed, will follow up with a budget proposal. But they need your support in order to do this. So when you write your Congressman and Senator, send copies to Wilson and Domenici too.

With that said, let me try to summarize my impressions of the day and a half conference. First off, Melvena Heisch of the Oklahoma State Historic Preservation Office (OSHPO) and her staff did a great job in organizing the event. We had quite a few Oklahomans present – me, John Ackenhausen, Melvena Heisch and Jim Gabbert of OSHPO, Robert Erwin of Preservation Oklahoma, Inc., and yes, even John Hartley of the Oklahoma Department of Transportation. Even though ODOT and other state DOTs were repeatedly trounced for destruction of the Roadbed, John was the only DOT person to attend and he stuck it out, offering some good ideas on building preservation.

Our time was spent alternating between small groups where we would tackle specific questions and large groups where we would go over every small group's thoughts. I was struck by how much we were in agreement on many basic points. As much as we were all concerned with the destruction of the highway itself, everyone could see that the limited funds

available through Corridor Act could not be used for road preservation. One bridge could wipe out the entire \$10 million! (In order to preserve the Road, we are going to have to look at new legislation on the national or state level.) So we knew the monies should be used for "brick and mortar" (building) work. We also agreed that businesses should only have to do "one-stop" shopping in order to apply for help and that guidelines need to be established up front to keep non-eligible businesses from applying.

We quickly decided that, in no way, was \$10 million enough. The need to find additional funds is crucial – whether through corporate donations or more federal funding. Coupled with that came the realization that we need to make every dollar count. And this should be accomplished through coordination and cooperation between the various existing organizations such as the National Park Service, Route 66 Associations, State Preservation Offices, Main Street Programs, DOTs (remember, they also have the TEA-21 monies), National Trust for Historic Preservation, Scenic Byways, etc. and private property owners. Plus, somehow, we need to compile a database of all possible funding sources.

One thing that became painfully obvious was the need for the state associations to learn about grant writing, preservation guidelines, and the various federal projects/funds (remember this is a federal program and must go through "Section 106", a process no one could explain very well). Our Association once had a preservation group, but due to declining numbers and fewer active members, we don't any more. We really need some folks to step forward here. We've got to go to bat to save the businesses and save the Road. Once the nitty-gritty is figured out, we will need to go to each town or region along the Route with a "Roadshow" to educate people on what we can provide through the Act and whatever clearinghouse/one stop shopping contact we establish.

We all agreed that the "Route 66 Corridor" should be what we see through the windshield while traveling – whether this is urban or rural. There simply isn't enough money to go blocks away from the Route. Favorite side trip spots (like Meteor Crater or the Totem Pole Park) would be exceptions. It was generally felt that buildings had to be at least 25 years old to qualify. They should either be well-known "Route 66 icon" properties or, preferably, be eligible

for (and eventually submit paperwork to be included on) the National Register of Historic Places. Why? This would help ensure that the owners would be good stewards of the money and would be in it for the long haul.

It was agreed that a maximum dollar amount should be placed on each grant or matching fund. But that's about where the agreement stopped. What should qualify as a grant and what should be a matching fund? Other major areas still to be resolved: how much overhead will this program have? Some felt that the state Historic Preservation Offices working with a committee made up of volunteers from the Association, Main Street, Scenic Byways, etc. could handle the load. Others disagreed and said the SHPOs would need to hire more people as would the NPS - and their salaries would come out of the Corridor Act.

And just how would we spend what money we have left? Only on bricks and mortar? Or do we promote the Route via brochures and ad campaigns to encourage more travelers so the spruced-up businesses would have tourists to sell to. Or should we prepare school curriculums? Do we do lots of little projects or concentrate on some bigger, high profile projects to get the media excited? What happens if we are wildly successful and the homogenized chains move in to our restored areas? Do we need to do complete surveys of all the "assets" (the properties) in each state before we even spend a dollar to help businesses? How do we determine how much money goes to each state? By miles of Road? - then Kansas would not get much at all. By need? Who determines which states are the neediest? How do we keep national and local politics out of this process?

As you can see, there is still much to be worked out. The National Park Service will review the various thoughts, then send out their understanding of what was said. It is up to us to ask for another meeting to be held or if everything is via correspondence from now on.

Our guiding principle is "heritage tourism" - to enhance the driving and historical experience along Route 66 for the tourist while enabling businesses to do what they do best - serve the public. This will take education - communities, the general public, businesses, city councils, state legislatures. Everybody has to be willing to do this. It is only when we all agree that Route 66 is worth saving and that we are all

willing to pitch in, will we be able to make this work.

One of the attendees at the meeting was David Williams. He and his wife have the web site [www.route66.com](http://www.route66.com) and he has offered to put in a section and centralized base of information about the Act. It will include legislation, current goings-on, players, contact information for Congress, suggested letters, proposals, a discussion list, and more. You can reach David at [dpw3@route66.com](mailto:dpw3@route66.com) if you would like to talk to him further.

Less than a week after the meeting, Rich Williams, President of the New Mexico Association, sent a letter to the attendees proposing a structure to help ensure we address Route 66 as a national corridor, not a state by state one. He is afraid that if we rely on informal networks, especially given the flux in active members that each association inevitably seems to go through (or in some cases, some associations have disbanded for several years before reforming), we could seriously jeopardize the effectiveness of this program. He would like to see what he calls the private sector (as opposed to government) form an organization which the National Park Service can work with.

Rich proposes an Advisory Committee get together to create a National Route 66 Foundation (501 c-3) non-membership organization. This Foundation would conduct business on behalf of the whole Route - including fundraising activities from the private sector, corporations, foundations, and other philanthropic organizations. The Foundation would partner, contract with Route 66 state associations, the Park Service, SHPOs, and other federal, state, or local organizations to carry out regional preservation and interpretation work. The Foundation would partner and contract with the National Historic Route 66 Federation (a 501 c-4) for advocacy, political work, and potential corridor wide marketing - especially since they were so instrumental in getting the Act passed in the first place.

And who would make up the Advisory Committee to get the ball rolling? Rich proposes 51 members: 1 rep from each state Association, 1 rep from the National Historic Route 66 Federation, 1 rep from each state's Historic Preservation Office, 1 rep from each state's Department of Tourism, 1 rep from each state's Economic Development Department (like a Main Street or Community Development division), 1 rep from each state's highway and transportation

department (like the state Scenic Byway coordinator), 2 tribal Tourism/Economic Development people, 2 National Park Service people, 1 National Scenic Byway person, 1 National Trust for Historic Preservation person, and 4 at-large positions – representing miscellaneous stakeholders not directly associated with any of the above groups. The Advisory Committee would meet annually to elect a Board of Directors – 9 total, 3 elected per year with staggered terms of three years each. The Directors would elect their own officers. The Directors will be empowered to set all policies and procedures and run all operations of the Foundation.

Rich recognizes that many of the participants in the Oklahoma City meeting expressed reluctance at creating more bureaucracy. But he points out that corporations and foundations only want to partner with mature, sophisticated, and stable groups. A national non-profit can do much more than state groups. Everyone agrees that more money is needed and that this should be a longer lasting program than the 10 years spelled out in the Act. Only a national organization can answer both those needs.

So, what do you think? Give us your feedback! And don't forget to write Washington DC and urge that the budget include appropriations to fund the Route 66 Corridor Act.

### **Sapulpa Preservation**

The Berryhill Building, located at 14-20 East Dewey (Route 66) right next door to The Book Place, has been placed on the National Register of Historic Places. It was built in 1910 by Theodore Berryhill, who used his Glen Pool oil field proceeds to build it as an investment for his son Earle.

For years the building was the premier office complex in Sapulpa, housing oil companies, doctors, lawyers, and businessmen.

The Trolley restoration group has managed to raise enough money to get the project back on track. The goal is to restore the original car and then plan excursions on the TSU track between Tulsa and Sapulpa before the end of the year.

### **Chandler Museum celebrates 20<sup>th</sup> Century**

The 20th Century Exhibit and Contest has been underway at Chandler Pioneer History Museum. They have been looking for significant items from the most important to prettiest or most tasteless. Ribbons will be awarded at the Gala Exhibit Opening Saturday night, April 8 6:30 pm, at the museum which is located at 717 Manvel Avenue. The exhibit will be on display until October 1<sup>st</sup>. It should make a free and interesting stop for 66 travelers. Hours are Monday – Friday 9:30 to 4.



NATIONAL ROUTE 66 CORRIDOR ACT MEETING IN OKLAHOMA CITY left to right:  
Roger Hatheway(Calif.), Angel Delgadillo(Ariz.), Rich Williams(N.Mex.), Wendell Short(Tex.),  
John Ackenhausen(Okla.), Scott Nelson(Kan.), Ron Robb(Mo.), Jeff LaFollette(Ill.).

### **Old stretch of 66 in Arcadia makes the National Register, too**

As many of you know, Jim Ross built his Phillips 66-style home just east of Arcadia on an older stretch of 66. What you may not know is that Jim nominated that .9 mile stretch of Road to the National Register of Historic Places and that the nomination was accepted.

What makes this particular stretch of highway unique? Starting its Route 66 existence as a dirt road, it was paved in 1928 and 1929 during two different highway projects. Each project used a different type of paving surface. The first used Portland cement concrete. The second had two inches of asphalt laid over a five-inch concrete base with 9-inch concrete edgings (like a wider version of the 9' wide road up near Miami). The dual surfaces carried Route 66 traffic until 1952, when it was bypassed by what we now know as the current State Highway 66 alignment.

Congratulations, Jim!

### **Arcadia and Route 66 loses a good friend**

On December 28<sup>th</sup>, Arcadia Historical Society and the Round Barn lost a good friend - Nellie Ottinger passed away. Active in the rebuilding of the Round Barn, she also helped run the gift shop located in the bottom level of the well-known landmark and was involved in a number of other activities. She will be sorely missed.

### **Edmond Museum to host special exhibit**

The Edmond Historical Society is hosting the Vietnam Wall Experience, a traveling exhibit of the Vietnam Veterans Memorial in Washington, D.C. The exhibit will be located in Edmond's Mitch Park April 28-May 1. For more information call (405) 340-0078.

### **OKC's Omniplex announces spring schedule**

The second quarter of 2000 is bringing a number of fascinating exhibits to Oklahoma City's Omniplex, located at 2100 NE 52<sup>nd</sup> – just a short hop away from Route 66. Some of the events and exhibits include:

Everest - large format film playing at the OmniDome.

Remember the Children: Daniel's Story – interactive exhibit telling the experiences of a Jewish family during the Holocaust.

Fiberworks and Oklahoma Quilt Artists.

The Search for Life in the Universe – in the

Kirkpatrick Planetarium.

Kirkpatrick Gardens and Greenhouse will host a variety of exhibits too numerous to list.

Dolphins – another large format film debuts May 6<sup>th</sup> at the OmniDome.

For more information call (405) 602-OMNI. For show time information on the OmniDome call (405) 602-DOME.

### **El Reno to host Preservation Conference**

Oklahoma's 12<sup>th</sup> annual statewide preservation conference will be held May 4-6 at Redlands Community College in El Reno. The conference will feature three concurrent tracks: Tribal Preservation Programs and Issues, Preservation Means Opportunities for Housing and Economic Development on Main Street, and Preservation Toolbar.

Special guest speakers include Lee Adler, nationally known preservation leader from Savannah, GA and George Horse Capture, prominent cultural resource specialist with the Smithsonian Institution's Cultural Resources Center.

Special events will include tours of El Reno's many historic properties, Darlington Agency, and Fort Reno. For more information, contact Melvena Heisch at (405) 522-4484 or Debbie Harrison at (405) 262-8888.

### **Three El Reno properties on the Save America's Treasures list**

The National Trust for Historic Preservation and the White House Millennium Council's Save America's Treasures program has designated thirteen official projects in Oklahoma, thanks to local and statewide preservation efforts. Three are located in El Reno: The Canadian County Jail, the Canadian County Sheriff's Stable, and the El Reno Swimming Pool Municipal Bath House.

Other Oklahoma projects include the Skirvin Hotel in Oklahoma City, the Marland Mansion in Ponca City, the Historic Santa Fe Depot in Ardmore, the L.L. Stine Home in Woodward, and the Fort Gibson Historic Site in Fort Gibson.

## **Learn about Cheyenne culture in western Oklahoma**

When traveling across western Oklahoma on Route 66, make a point to stop at the following attractions to learn about the Cheyenne people from their perspective: Fort Reno in El Reno, Cheyenne Cultural Center in Clinton, Battle of the Washita in Cheyenne, Mohawk Indian Store in Clinton, and the Native American Art Gallery in Colony.

## **Protest held on threatened section of Spur 281**

Just as we were going to press, plans were being made to hold a protest in Canadian County on Tuesday March 28<sup>th</sup> along the section of Route 66 slated for destruction by ODOT. Preservation-minded residents from El Reno are organizing this event to coincide with the arrival in Oklahoma of a Learning Channel documentary crew that is shooting a Route 66 video with a decidedly different twist.

We plan to have more on this in the next issue.

## **Route 66 Museum has new curator, director**

The Oklahoma Historical Society has named Nolan A. (Andy) Watson as the new Curator for the Route 66 Museum in Clinton and Pat Smith, who has been acting director as Director.

Mr. Watson has a master's degree in history and museums. His primary responsibility will be caring for exhibits and developing new ones.

John Hill, the previous Director of the Museum is now the Exhibits Curator for the new State Museum of History in Oklahoma City, coordinating exhibits for the new Museum in the new Oklahoma History Center.

And for those of you who remember the first Director, Nancy Lowe-Clark, she is now the new Executive Director for the 99s Museum of Women Pilots in Oklahoma City.

## **Old Town Museum Complex expands**

There is a flurry of activity on the north side of the Old Town Complex in Elk City. Additional structures will show visitors what early day businesses looked like. The National Route 66 Museum draws people from every section of the U.S. so the hope is that new and added exhibits will generate repeat visits.

## **In Memory**

The Oklahoma Route 66 Association donated an Oklahoma red bud (our state tree) in memory of Susan Jane Ferrell, daughter of Mr. and Mrs. Don Ferrell of Chandler, OK, who are members of our Association. Susan was a victim of the bombing in Oklahoma City on April 19, 1995. 167 other innocent victims perished in a senseless terrorist act. Susan's tree is located in McClain Rogers Park, a WPA Route 66 landmark, in Clinton, OK. The tree is growing taller and stronger each year. In the spring, the blooms are breathtaking in their beauty, just like Susan's personality.

## **"Haunted Highway: The Spirits of Route 66"**

A book review by Carol Duncan

If you would like to spend an evening reading ghostly stories, a new book is out at your local bookstore. Sixty-six tales of spirit encounters on Route 66 or within a short distance from the Mother Road may send tingles of scary vibrations up and down your spine. Written by Ellen Robson and Dianne Halicki, "Haunted Highway: The Spirits of Route 66" is delightful and will entertain you from Chicago to Santa Monica. We all know true or maybe true stories that pass down from generation to generation. I myself went with a group of Route 66 friends to look for the spook lights near Miami. It was fun and a little bit scary. Be sure you are not alone when you read this book.

## **One Day, Some Day**

**By Carol Duncan**

On one bright and happy day,  
grownups' laughter and  
children's smiles  
went away.

A dark black cloud hid the sun,  
flames and carnage had begun.  
Firemen, policemen, and EMS too  
responded swiftly, true.  
But alas! Too late for some  
for the grieving process was to come.

The sun will shine again someday,  
then children can go out and play.  
Our saddened hearts will mend  
and life will go on again.

**The Mail Bag**  
**letters received by**  
**the Oklahoma Route 66 Association**

Cheryl Nowka wants us to remind all business members that she is willing to do a free (yes, FREE) one-page web site for any business located on Route 66. She will do a page that shows a photo of the business and lists the address and phone number as well as what merchandise they have for sale. The site will not actually handle e-commerce but at least web cruisers will know they are buying merchandise from real "on the Route" merchants and not someone from Timbuktu who's creating stuff without giving back to the Route. You can contact Cheryl at nowka@4u.net or by calling (702) 876-3626. Cheryl has also been busy trying to compile a central clearinghouse for information on the eight state associations in order to encourage people to join. Apparently many folks don't realize that joining one association or group does not make you a member of all.

We received a letter from Sally Rudman, St. Cloud, Florida. On May 15<sup>th</sup>, a group of powered parachute (classified as ultralights) pilots will leave from California and fly/drive along Route 66. "As we fly and drive toward your state and the cities and towns along the way, we will telephone several days ahead of our intended arrival. It is the group's desire to donate any and all proceeds to the local communities we pass through." She then proposes our Association contact local Chambers of Commerce to have local businesses donate one-cent per mile for every mile they travel from LA to Chicago. She hopes that the money, which would stay in the local community, would be earmarked for underprivileged children. They will also give introductory flights along the way and contribute proceeds to the local Route 66 communities. For more information contact Sally at (407) 892-8146.

We also got a letter from the American Volkssport Association, an organization that promotes non-competitive walking events. They are starting a special award program for persons completing a sanctioned event in each of the eight Route 66 states. They plan is to start the program January 1, 2001 and give participants four years to finish the program. This means they must do at least one event in each state during this time period. Walks are generally 6.2 miles

in length and are self-paced. They are encouraging the walking clubs and the state Associations to get together to discuss ideas and suggestions.

**Hitchhikers**

Route 66 News from other states.

**Dateline Missouri...** The St. Clair Historical Museum in St. Clair, MO has just issued its Fourth Series of 20 Highway 66 postcards, taken from old postcards and privately owned photos, that documents the businesses along a 35-mile stretch of Route 66 through rural Franklin County. It has taken four years to amass this latest collection, which now makes the total number of different cards in all of the Series to 80. These are limited edition printings. Series One is completely sold out but there are a few sets of Series Two and Three remaining. To order any of the three remaining Series send 11.50 for each set to St. Clair Historical Museum, P.O. Box 137, St. Clair, MO 63077.

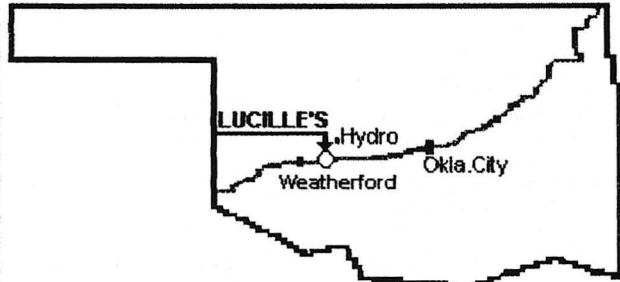
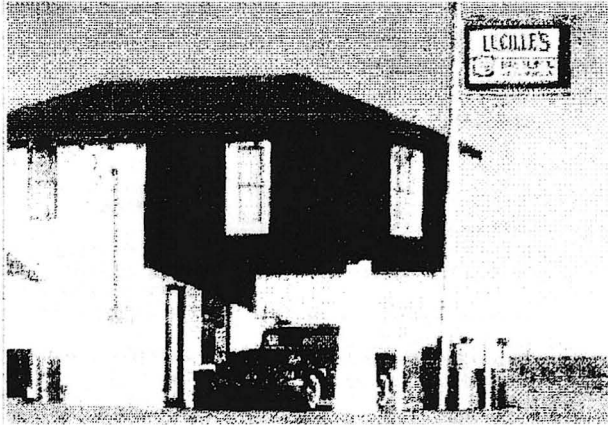
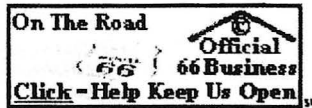
**Dateline Kansas...** The Kansas Historical Route 66 Association reports a number of frustrating encounters with their Kansas Department of Transportation. In the years 1998 and 1999, KDOT has destroyed the 1959-1960 alignment from Riverton to Baxter Springs and taken out 1200 feet of the earlier Marsh Arch bridge alignment dating from the 20s and 30s. They also report that the new proposed diagonal US 400 from Parsons to I-44 will, in the least, destroy more pavement from the 20s and 30s alignment, and possibly affect the Marsh Arch bridge itself by at the very least marooning it on a dead-end part of the Mother Road. As the Kansas Association points out, we need some sort of legislation to protect the original roadbed alignments and pavement structures and the abandoning of stretches of the old highway.

**Dateline Texas...** Restoration for the U-Drop-Inn in Shamrock received a big boost. The Texas Department of Transportation has approved TEA-21 grant money to restore the building's original appearance in order to create a Travel and Information Center.

The Devil's Rope Museum now has a web site: [www.barbwiremuseum.com](http://www.barbwiremuseum.com)



# LUCILLE'S ON ROUTE 66 IN OKLAHOMA



7 miles E of Weatherford or  
1 mile SW of Hydro on Route 66

Lucille's is now listed on the National Historic Site Registry as P R O V I N E.  
Lucille has been at this business location since 1941.

Coffee Mugs with Lucilles & OK 66 Sign	\$ 8.00
T-Shirts with Station on back US 66 Front	\$ 15.00
US 66 Magnets	\$ 1.00
66 Iron On Patch Emblem	\$ 3.50
66 Beverage Can Cozy	\$ 2.00
66 Hat/Lapel Pin	\$ 3.50
66 Key Chains	\$ 1.50
66 License Plate - Going Somewhere	\$ 3.00
66 License Frame - Mother Road	\$ 5.00
Postcard of Lucille and Station	\$ 1.50
Bumper Sticker - Get Your Kicks on 66	\$ 3.00
Ball Cap with Lucille's on it	\$ 6.50
US 66 Earrings	\$ 4.00
Book: LUCILLE, Mother Of The Mother Road	\$ 25.00

To Order Any Of The Above Call 1-405-663-2341 or write:  
Lucille Hamons - Route 1, Box 44 - Hydro, Oklahoma 73048

For Free Website call 1-702-876-3626  
or write:

CHERYL NOWKA  
6415 WESTWIND RD.  
LAS VEGAS, NV 89118-3442  
nowka@4u.net

Sample  
Page

# OKLAHOMA ROUTE 66 ASSOCIATION BUSINESS DIRECTORY

BUSINESSES ARE LISTED BY TOWN STARTING IN THE EAST AND WORKING WEST.

WE KNOW THAT YOU PATRONIZE THEM SO LET THEM KNOW THAT YOU ARE ALSO A MEMBER OF THE ASSOCIATION.

## QUAPAW

BANK OF QUAPAW  
P.O. BOX 588  
QUAPAW OK 74363  
918-674-2263

## MIAMI

MIAMI CHAMBER OF  
COMMERCE  
P.O. BOX 760  
MIAMI OK 74355  
918-542-4481

FRIENDS OF THE COLEMAN  
216 WEST CENTRAL AVE.  
MIAMI OK 74354  
918-542-9300

PIZZA HUT EXPRESS  
P. O. BOX 1247  
MIAMI OK 74354  
918-540-2471

PIZZA HUT OF MIAMI  
P. O. BOX 1247  
MIAMI OK 74354  
918-542-8474

WAYLAN'S KU-KU BURGER  
P.O. BOX 994  
915 N. MAIN  
MIAMI OK 74354  
918-542-1698

## AFTON

ROUTE 66 CAFE  
P.O. BOX 601  
ROUTE 66  
AFTON OK 74331  
918-257-5681

TOWN OF AFTON  
P.O. BOX 250  
123 SOUTH MAIN STREET  
AFTON OK 74331-0250  
918-257-4303

GRAND LAKE  
ASSOCIATION  
6809 HIGHWAY 59 NORTH  
GROVE, OK 74344  
918-786-2289

## VINITA

VINITA  
CHAMBER of COMMERCE  
P.O. BOX 882  
VINITA OK 74301  
918-256-7133

FIRST NATIONAL BANK  
P. O. BOX 407  
VINITA OK 74301  
918-256-7811

K I T O RADIO  
FM 96.1 AM 1470  
P.O. BOX 961  
402 N. WILSON  
VINITA OK 74301  
918-256-2255

LITTLE CABIN PECAN  
COMPANY  
ROUTE 2 BOX 22  
VINITA OK 74301  
918-256-2218

OKLAHOMA STATE BANK  
P.O. BOX 278  
VINITA OK 74301  
918-256-5585

STATE FARM INS. CO.  
202 SOUTH WILSON  
P.O. BOX 542  
VINITA OK 74301  
918-256-6424

REYNOLDS BOOT SHOP  
& WESTERN WEAR  
310 EAST ILLINOIS  
VINITA, OK 74301  
918-256-2913

CLANTON'S CAFE  
319 EAST ILLINOIS  
VINITA, OK 74301  
918-256-9053

## CHELSEA

CHELSEA AREA  
CHAMBER of COMMERCE  
618 SOUTH PINE  
CHELSEA, OK 74016  
918-789-2220

BONNIE B's RESTAURANT  
304 EAST LAYTON  
CHELSEA OK 74016  
918-789-2572

HEARTLAND MOTEL  
325 EAST LAYTON  
CHELSEA OK 74016  
918-789-3443

## FOYIL

TOP HAT DAIRY BAR  
P.O. Box 168  
Hwy 66 & 28A  
FOYIL OK 74031  
918-341-0477

## CLAREMORE

ROGERS COUNTY  
HISTORICAL SOCIETY  
P. O. BOX 774  
CLAREMORE OK 74017  
918-342-1127

J.M. DAVIS GUN MUSEUM  
333 N. LYNN RIGGS  
P.O. BOX 966  
CLAREMORE OK 74018-0966  
918-341-5707

WILL ROGERS MEMORIAL  
BOX 157  
CLAREMORE OK 74018  
800-828-9643

WILL ROGERS MOTOR INN  
940 S. LYNN RIGGS BLVD.  
CLAREMORE OK 74017  
918-341-4410

DAYS INN  
1720 S. LYNN RIGGS  
CLAREMORE, OK 74017  
918-343-3297

HOVERS HAVE ALL MALL  
714 W. WILL ROGERS BLVD  
CLAREMORE, OK 74018  
918-341-7878

## CATOOSA

CATOOSA CHAMBER OF  
COMMERCE  
P.O. BOX 297  
CATOOSA OK 74015  
918-266-6042

## TULSA

FIREY BROS. MUSIC  
4718 E. 11TH ST.  
TULSA OK 74112  
918-838-9895

LYON'S INDIAN STORE  
401 E. 11TH  
TULSA OK 74120  
918-582-6372

METRO DINER  
3001 E. 11TH  
TULSA OK 74104  
918-592-2616

CROW MOTORS  
13338 EAST 11th ST.  
TULSA, OK 74108

DECO TO DISCO  
2921 EAST 15th ST.  
TULSA, OK 74104  
918-749-3620

OLLIES RESTAURANT  
4070 SOUTHWEST BLVD.  
TULSA OK 74107  
918-446-0524

THE DINER  
1905 S. SHERIDAN  
402 E. 2ND  
TULSA OK 74112  
918-832-6663

## SAPULPA

FRANKOMA POTTERY  
P.O. BOX 789  
2400 FRANKOMA ROAD  
SAPULPA OK 74066  
918-224-5511

ROUTE 66 CAFE  
219 EAST DEWEY  
SAPULPA, OK 74066  
918-224-4190

SAPULPA MAIN STREET  
101 E. DEWEY  
SAPULPA OK 74066  
918-224-5709

SAPULPA HISTORICAL  
SOCIETY  
P. O. BOX 278  
SAPULPA, OK 74067  
918-224-4871

SAPULPA TROLLEY  
& RAIL MUSEUM  
701 EAST DEWEY  
SAPULPA, OK 74066  
918-224-1515

## KELLYVILLE

COTTON GIN RESTAURANT  
20351 WEST HIGHWAY 66  
KELLYVILLE OK 74039  
918-247-6090

## BRISTOW

GOLDEN WEST TRAVEL  
116 SOUTH MAIN  
BRISTOW, OK 74010  
918-367-6569

FROM MY HEART  
29625 HIGHWAY 66  
BRISTOW OK 74010  
800-276-7754

RUSS' RIBS  
7 MEADOW HILL DR.  
BRISTOW, OK 74010  
918-640-3784

BRISTOW TIRE & AUTO  
115 W. 4TH  
BRISTOW OK 74010  
918-367-2224

SOMETHING SPECIAL  
203 S. MAIN  
BRISTOW OK 74010  
918-367-5133

CANDY CREATIONS, ETC.  
306 NORTH MAIN  
BRISTOW, OK 74010

## STROUD

STROUD CHAMBER OF  
COMMERCE  
P.O. BOX 633  
STROUD OK 74079  
918-968-3321

CLOVIS INS. AGENCY INC.  
P.O. BOX 270  
STROUD OK 74079  
918-968-2552

ROCK CAFE  
114 W. MAIN  
STROUD OK 74079  
918-968-3990

## DAVENPORT

CENTRAL OKLAHOMA  
TELEPHONE CO.  
P.O. BOX 789  
DAVENPORT OK 74026  
405-377-2241

MARKETPLACE  
INSURANCE  
AGENCY, INC.  
P.O. BOX 280  
205 BROADWAY  
DAVENPORT OK 74026  
918-377-2355

TOWN & COUNTRY  
GROCERY  
PO BOX 405  
DAVENPORT OK 74026  
918-377-2535

DAN'S BAR-B-QUE  
P. O. BOX 561  
DAVENPORT, OK 74026  
918-377-2288

## CHANDLER

GRANNY'S  
COUNTRY KITCHEN  
917 MANVEL AVE.  
CHANDLER OK 74834  
405-258-2890

JACK'S DELI.  
501 E. 1ST  
CHANDLER OK 74834  
405-258-2548

LAGERE AND  
WALKINGSTICK  
1006 MANVEL DRAWER 9  
CHANDLER OK 74834  
405-258-0604

L.D'S AUTOMOTIVE  
RT. 1 BOX 92  
ROUTE 66  
CHANDLER OK 74834  
405-258-2120

LINCOLN MOTEL.  
740 E. 1ST  
CHANDLER OK 74834  
405-258-0200

MUSEUM OF PIONEER  
HISTORY  
719 MANVEL  
CHANDLER OK 74834  
405-258-2425

NATIONAL AMERICAN  
INSURANCE CO.  
1010 MANVEL AVE.  
P.O. DRAWER 9  
CHANDLER OK 74834  
800-822-7802

OAK GLEN  
RV PARK & STORE  
RT. 2 BOX 102  
CHANDLER OK 74834  
405-258-2994

## WELLSTON

WARD'S RV PARK  
P.O. BOX 477  
WELLSTON OK 74881  
3 MILES WEST  
405-356-2364

## ARCADIA

HILLBILEE'S CAFE  
P.O. BOX 356  
ARCADIA OK 73007  
405-396-8177

THE ROUND BARN  
ARCADIA HISTORICAL &  
PRESERVATION SOCIETY  
BOX 134  
ARCADIA OK 73007  
405-396-2398

## EDMOND

EDMOND MUSEUM  
EDMOND HISTORICAL  
SOCIETY  
431 S. BOULEVARD  
EDMOND OK 73034  
405-340-0078

## OKLAHOMA CITY

66 BOWL  
3810 N.W. 39TH EXP.  
OKLAHOMA CITY OK  
73112-2960  
405-946-3966

VOORHEES & VOORHEES.  
P. C.  
2220 SHADOWLAKE DRIVE  
OKLAHOMA CITY OK 73159  
405-692-8800

## BETHANY

NATIVE AMERICA  
GALLERY & GIFTS  
3823 NORTH COLLEGE  
BETHANY, OK 73008  
405-789-4300

ET CETERA GIFTS  
6704 NW 38th ST.  
BETHANY, OK 73008  
405-789-9994

BETHANY KARS  
7126 NW 39 EXPRESSWAY  
BETHANY, OK 73008  
405-789-4755

## EL RENO

EL RENO VISITORS &  
TOURISM  
P. O. BOX 700  
EL RENO, OK 73036  
405-262-4070

EL RENO MAIN STREET  
P. O. BOX 606  
EL RENO, OK 73036  
405-262-8888

CANADIAN COUNTY  
MUSEUM - HISTORICAL  
SOCIETY BEN CLARK  
RIFLE CLUB  
BOX 173A RT. 1  
COUNTRY CLUB ROAD  
EL RENO, OK 73036  
405-262-6656

JOBE'S DRIVE-IN  
1220 SUNSET DRIVE  
EL RENO, OK 73036  
405-262-0194

FORT RENO  
VISITOR CENTER  
7107 W. CHEYENNE ST.  
EL RENO, OK 73036  
405-262-3987

## CALUMET

CALUMET CHAMBER OF  
COMMERCE  
P.O. BOX 241  
CALUMET OK 73041

## GEARY

CANADIAN RIVERS  
HISTORICAL SOCIETY  
115 EAST MAIN  
GEARY OK 73040

## HYDRO

LUCILLE'S 66  
MEMORABILIA  
ROUTE 1, BOX 44  
HYDRO OK 73048  
405-663-2341

GRAFFITI GRILL  
P. O. BOX 424  
HYDRO, OK 73048  
405-663-2475

## WEATHERFORD

WEATHERFORD  
CHAMBER OF COMMERCE  
P.O. BOX 729  
ROOM 224, CITY HALL  
WEATHERFORD OK 73096  
405-772-7744

ZOELLEWR-DAVIDSON  
FORD  
1324 GRANDVIEW DRIVE  
WEATHERFORD, OK 73096  
580-772-3319

## CLINTON

CLINTON  
CHAMBER OF COMMERCE  
P.O. BOX 1595  
CLINTON OK 73601  
405-323-2222

OKLAHOMA  
ROUTE 66 MUSEUM  
2229 WEST GARY BLVD.  
CLINTON, OK 73601

CHEYENNE  
CULTURE CENTER  
ROUTE 1 BOX 3130  
CLINTON, OK 73601

BEST WESTERN TRADE  
WINDS  
2128 GARY BLVD.  
CLINTON OK 73601  
405-323-2610

## ELK CITY

ELK CITY  
CHAMBER OF COMMERCE  
P.O. BOX 972  
ELK CITY, OK 73648  
580-2250207

NATIONAL  
ROUTE 66 MUSEUM  
P.O. BOX 5  
ELK CITY, OK 73648  
580-225-6266

OLD ROUTE 66 ANTIQUE  
MALL  
401 E. 3RD  
ELK CITY OK 73644  
405-225-9695

OLD TOWN MUSEUM  
P.O. BOX 542  
ELK CITY OK 73644  
405-225-2207

ANADARKO BASIN  
MUSEUM OF  
NATURAL HISTORY  
107 EAST 3RD.  
ELK CITY OK 73644  
405-225-2940

TRAVELODGE  
301 SLEEPY HOLLOW CT.  
ELK CITY, OK 73644  
580-243-0150

## SAYRE

SAYRE CHAMBER OF  
COMMERCE  
111 NORTH 4TH  
SAYRE OK 73662

## ERICK

ERICK HONEY FARM  
ROUTE 1 BOX 80  
ERICK, OK 73645  
580-526-3759

## OUT OF STATE

U-DROP-INN  
P. O. BOX 870  
SHAMROCK, TX 79079

O'REILLY'S AUTO PARTS  
P.O. BOX 1156  
SPRINGFIELD MO 65801  
417-862-2674

ROUTE 66 U.S.A.  
2700 KIOWA BOULEVARD  
SOUTH  
LAKE HAVASU CITY AZ  
86403  
520-680-6677

IF YOU FEEL  
THAT YOUR  
PLACE OF  
BUSINESS HAS  
BEEN  
MISTAKENLY  
LEFT OFF OF  
THIS LIST  
PLEASE LET US  
KNOW.