

# ON THE ROAD ...



*The official newsletter of the Oklahoma Route 66 Association*

Volume 20, Issue 4

December 2008

## 2008 BOARD

**President:** Mike Hickey  
5304 NW 111 St  
Oklahoma City, OK 73162  
**Eastern VP:** Cletus Simpson  
PO Box 134  
Davenport, OK 74026  
**Western VP:** Marie Hanza  
PO Box 857  
Weatherford, OK 73096  
**Secretary:** Jill Ann Church  
PO Box 922  
Bethany, OK 73008  
**Treasurer:** Kim Evans  
100 Steele Ave  
Chandler, OK 74834  
**County Representatives**  
**Beckham:** Doris Ray  
PO Box 44  
Erick, OK 73645  
**Ottawa:** Amanda Davis  
PO Box 760  
Miami, OK 74355  
**Blaine/Caddo:** Vacant  
**Canadian:** Jerald Ashby  
3201 N Richland Rd  
Yukon, OK 73099  
**Creek:** Frank Gierhart  
110 E Dewey  
Sapulpa, OK 74066  
**Custer:** Marion Davidson  
PO Box 662  
Weatherford, OK 73096  
**Delaware/Craig:** Vacant  
**Lincoln:** Ron Burden  
PO Box 261  
Davenport, OK 74026  
**Oklahoma:** Alvin C Harrell  
3301 S Western  
Oklahoma City, OK 73109  
**Rogers:** Blaine Davis  
PO Box 1300  
Catoosa, OK 74015  
**Tulsa:** Brad Nickson  
4413 S Sandusky Ave  
Tulsa, OK 74135  
**Washita:** Carol Duncan  
Route 6 Box 2033  
Clinton, OK 73601  
**At-Large:** Jeanne Miller  
PO Box 884  
Davenport, OK 74026  
BaLinda Miller  
916 Manvel Ave  
Chandler, OK 74834  
**Administrator:** Marilyn Emde

## Clemons and Lemons and Jazz ... Oh My!!!

*By Jill Ann Church*

OKLAHOMA CITY, OK - Cloudy skies and a few measly severe thunderstorms didn't dampen a spectacular performance by jazz masters Joel Clemons and the Lemons at the Arts Festival Oklahoma 2008. The band went above and beyond during their afternoon outdoor concert in Oklahoma City on Sunday, August 31. This was one of many stops on their official **Route 66 Music Tour**.

A little classic and a little original jazz, a bit of audience participation and a gynormous amount of Main Street USA spirit made for an afternoon of very fine music and exuberance.

The **Route 66 Music Tour** hit the Mother Road in Chicago the last week of August, making its journey across 8 Great States, sharing its awesome gift of jazz in more than 14 cities along the way to Los Angeles. Joel Clemons and the Lemons have every intention of increasing public attention and awareness of the Route 66 heritage, as well as introducing the current economic significance to utilize the off-ramp, slow down, and enjoy the ride.

For a look at the Tour's stops and performances along the way, visit [www.route66-musictour.com](http://www.route66-musictour.com).



For additional information concerning the great talents of Joel Clemons and the Lemons, visit [www.joel-clemons.com](http://www.joel-clemons.com).

If by chance you missed them at the Arts Festival, you still have an opportunity to catch a performance. The guys will be passing this way again from time to time in future Route 66 Music Tours.



Oklahoma Route 66 Association

PO Box 446

Chandler, OK 74834

405-258-0008

[www.oklahomaroute66.com](http://www.oklahomaroute66.com)





## News Briefs

**On the Road** is under reconstruction. This is the first issue (ever) of the newsletter's new editor, Jill Ann Church. Emily Priddy stepped into a new teaching position, and we want to wish her the very best in her new journey.

\* \* \*

The Oklahoma Route 66 membership drive ended on October 10 at 5:00pm. There was major recruiting for several months, and a total of 81 new memberships as a result of the drive. First place winner was Association treasurer, Kim Evans of Chandler. Second place winner was Association Secretary, Jill Ann Church of Bethany. Third place winner was Jeanne Miller of Davenport. Prizes will be awarded at the January '09 Board meeting.

\* \* \*

Paid annual memberships were one of the awards for Association members who brought in at least 5 new members during the membership drive. The winners of this award were Jeanne Miller, Kim Evans, Marion Davidson, Doris Ray, and Jill Ann Church.

\* \* \*

The Oklahoma Route 66 Association will hold its annual Holiday Lights Cruise on Saturday, December 6, 2008 in Sapulpa and Tulsa. Check out [www.oklahomaroute66.com](http://www.oklahomaroute66.com) for times and Cruise route or call 405-258-0008 for more information.

\* \* \*

The Oklahoma Route 66 Association will be making plans for state-wide cruises in the future. Assistance from existing membership is crucial to make this a tremendous success.

\* \* \*

Trip Guide ads are being sold for the 2009 Trip Guide. NO ADS will be accepted after March 13, 2009, so get your apps in to Marilyn Emde today.

\* \* \*

The Rose Bowl Event Center open house was on October 18 in Tulsa. Sam Baker and his wife Torie purchased the building that once housed a bowling alley. Through diligent time and elbow grease, they are converting the property on Route 66 into a convention center.

\* \* \*

The schedule for 2009 Oklahoma Route 66 board meetings are as follows ...

**January 11, 2009** ... Annual board meeting will be held at the Chandler Library Meeting Room at 1021 Manvel Avenue. Following a potluck at noon, the meeting will begin at 1:00pm.

**April 19, 2009** ... Spring quarterly board meeting

**July 19, 2009** ... Summer quarterly board meeting

**October 18, 2009** ... autumn quarterly board meeting

The quarterly meetings will be held at the Oklahoma Tourism Information Center, located at NE 122<sup>nd</sup> and I-35 in Oklahoma City

Jeanne Miller usually treats the board members and guests with delectable desserts from her kitchen at the quarterly meetings. **THANK YOU, Jeanne!!!**

\* \* \*

We need YOUR photo submissions for consideration for the 2009 Trip Guide cover. All members are encouraged to submit photos. They need to be of a Route 66 scene, not a business. All color photos must be 300 dpi and must be sent at actual print size or larger. All black and white photos must be a minimum of 200 dpi and must also be at actual print size or larger. These photos may be submitted electronically as a JPEG file to [okrt66association@sbcglobal.net](mailto:okrt66association@sbcglobal.net) or by mail at PO Box 446 Chandler, OK 74834. For any questions, call 405-258-0008.

Submissions must be made **NO LATER THAN JANUARY 7, 2009.**

\* \* \*

The Oklahoma Route 66 Association will be having a cruise on June 20, 2009 in conjunction with the Chandler Interpretive Center Car and Motorcycle Show and Sock-Hop. Jeanne Miller, Cruise Committee Chairperson, is requesting help from the membership in soliciting prizes and/or cash awards, and to serve as volunteers at checkpoints. Please don't hesitate to contact Jeanne at [jjmiller@brightok.net](mailto:jjmiller@brightok.net) or 918-399-9476, or Marilyn at the Association office at [okrt66association@sbcglobal.net](mailto:okrt66association@sbcglobal.net) or 405-258-0008 for more information. We are hoping for statewide participation in hopes of this becoming an annual event.

\* \* \*

We at the Oklahoma Route 66 Association want to take this opportunity to wish you Happy Holidays ... and may the blessings of the Season carry you through 2009.



# Historic National Trust for Preservation Bus Tours a Wonderful Success

By Jim Ross & Shellee Graham

TULSA, OK - Among the highlights of the National Trust for Historic Preservation's national conference recently held in Tulsa were the Route 66 bus tours. With Shellee Graham assisting, I had the honor of leading two of the four tours—both from Tulsa to Arcadia. Participants included architectural historians, professional preservationists, consultants, and roadside culture enthusiasts, most of whom had never been on the Mother Road.



Leaving Tulsa, I talked about the history of the highway and points of interest along the route while Shellee took photos, chatted with those on board, helped keep the schedule, and inspired a festive atmosphere enjoyed by all. Roadside icons and properties listed on the National Register were a primary focus, with several stops included.

Following a drive-by of the Cyrus Avery Bridge and cruising the historic alignment to Sapulpa,

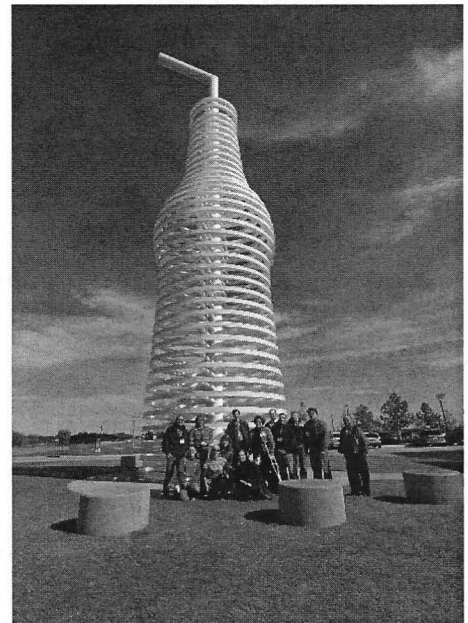


the first off-board stop was at the vintage Rock Creek Bridge, where participants

were able to walk the brick deck and take photos of both the bridge and the nearby vacated Tee Pee Drive-In theater. After driving a couple of



loops of original paving it was on to Bristow and then a stop at the Rock Café in Stroud, where owner Dawn Welch served breakfast burritos and gave a talk on the café's history, the fire, and her plans to rebuild.



Lunch was a brown-bag affair at the Route 66 Interpretive Center in Chandler, where renovations to the old armory drew praise from many in attendance. Next up was an unscheduled stop on the old stretch of roadbed east of Arcadia, where everyone delighted in traipsing through the brush to see a historic Federal Aid Project marker along the roadside. A visit to the Round Barn was just minutes away, followed by a final refreshment break at Pops, where everyone had a pop, some fries and rings, and posed for photos by the towering pop bottle out front. The return trip to Tulsa gave everyone an opportunity to discuss the sites they had seen and ask questions.

*Continued on next page ...*

**Photos by Shellee Graham.**



... Each day ended in an atmosphere closer to a family outing than an organized tour, with most everyone on a first-name basis. Comments were exceptionally positive, and Shellee and I are convinced that more than a few of those we introduced to Route 66 will be making future trips to explore our favorite highway.

Photo of the FAP marker on the old 1920s alignment east of Arcadia

→



## To Travel All 48 States in 2008 in One Trip ... in 60 Days

*By Marion Davidson*

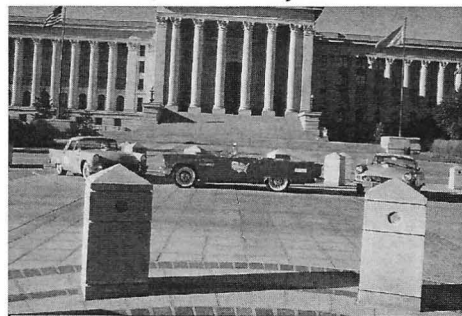
WEATHERFORD, OK - Three members of the California Chapter of CLASSIC THUNDERBIRD CLUB INTERNATIONAL (55, 56 & 57 Birds) Lucy Clark, Paul Lynch, Bill Mann and Doc Dockter started out in July driving their 1956 and two 1957 Birds to all 48 State Capitols, driving over 16,000 miles.



The Classic Thunderbird Club Int'l at the OKC Capital

The tour was created to raise awareness of McPherson College in Central Kansas, **the only accredited college in the country to offer bachelors degree in automotive restoration.** Many State Chapter members across each state joined the tour at their state's capitol for picture opportunities and encouragement. Lucy Clark kept a daily blog for the entire trip. Marion and Dolores Davidson from Weatherford, with their 1955 Thunderbird, joined them at the OKC Capitol on September 17 for pictures. The party spent the night in OKC and cruised to McPherson College the following

day. They were welcomed by the Dean of College of Automotive Restoration and toured a very impressive educational restoration facility. The cruisers spent the night in McPherson. Rising very early on September 19, they made good time to a lunch stop at Lucille's in Weatherford. Here they again greeted by local media and photo opportunities. Leaving Lucille's via Route 66 West, the next stop was the Sand Hills Curiosity Shop in Erick and the Famous Roger Miller Museum. Roger Miller Museum Officers and members treated the group to a very special tour and evening meal with homemade Ice Cream. The Davidsons left the group in Erick as the rest of the group departed for their 47th and 48th state capitols in New Mexico and Arizona. Oklahoma was the only one with an oil well in all their



The Classic Thunderbird Club Int'l at the steps of the OKC Capital. Photos by Marion Davidson

48 state capitol pictures. Lucy Clark's 1957 Thunderbird (front plate displays advertising of the Route 66 Mother Road) has driven Route 66 from Los Angeles to Chicago several times. She plans to travel back to Tulsa in 2009 for the Regional CTCI Convention. Mr. Davidson plans to meet up with Lucy again then and hear more of her experiences on the Mother Road.



# Grand Lake Association Honors Miami Tourism Partners

By Amanda Davis

MIAMI, OK ... The Buffalo Run Casino & Resort, The Coleman Theatre Beautiful, and Miami's Vance Ford were all honored at the 2008 Grand Lake Association Banquet held on Tuesday, November 11th at the Cherokee Yacht Club. Buffalo Run Casino & Resort was recognized as a top member for 2008 and was represented by Francesca Payne & Chris Tipton of their Marketing Department. The Coleman Theatre Beautiful was honored as the area's Outstanding Tourism Attraction. They were represented by Barbara & Willie Smith, Executive Directors of the Coleman Theatre, Willie Osborn, Chairman of the MDRA Board and Ann Gilbert, MDRA Board Member. Friends of the Coleman were represented by Jane Osborn, Dr. Ron Gilbert and Gary Crow. Miami's Vance Ford was honored as Outstanding Business for the recent investment made in their new facility on Miami's Main Street. John Vance and his wife Vicky were on hand to accept the award. Additional management and staff with the dealership were also present. GLA also honored additional partners from within the region.

The Grand Lake Association is an organization that works in partnership with the Oklahoma Tourism & Recreation Department to encourage travel & tourism in the 4-county Grand Lake region. Guest speaker for the banquet was Oklahoma Lt. Governor Ms. Jari Askins. The Lt. Governor spoke to the guests about the positive impact that tourism has on the entire state. Guests were congratulated for their combined efforts in positioning Northeast Oklahoma as a top destination. Lt. Governor Askins thanked all partners for being a voice for tourism, Oklahoma's third largest industry.

Amanda Davis, director of the Miami Convention & Visitors Bureau and representing the Grand Lake Association Board of Directors says this banquet has special meaning for this region. "We have all overcome great challenges over the past twelve months. Businesses, organizations and individuals honored this year made huge investments in communities that provided vision for so many working hard to move forward. Tourism plays a huge role in the growth of our region and we look forward to what is ahead for all partners."

For more information about tourism in the Northeast Oklahoma Region, contact the Miami CVB or GLA by visiting [www.visitmiamiok.com](http://www.visitmiamiok.com) or [www.grandlakefun.com](http://www.grandlakefun.com). Free tourism brochures can be ordered at [www.travelok.com](http://www.travelok.com).

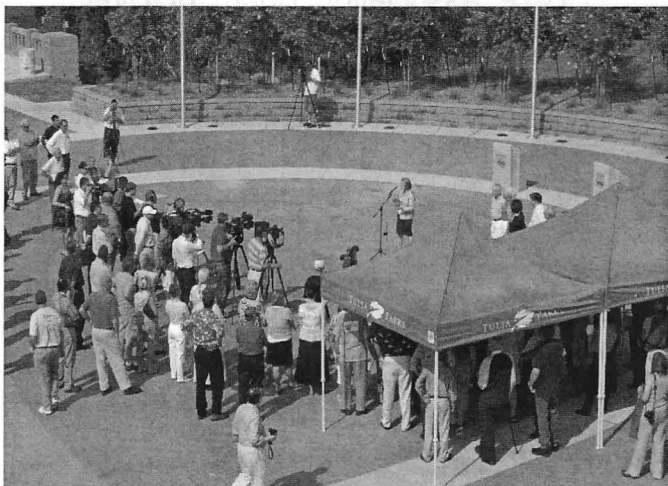


Honorees from Miami are pictured with special banquet guests and GLA representatives. (L-R) Lt Governor Jari Askins, Wayne Crouse with GLA, Amanda Davis with the Miami CVB & GLA, Francesca Payne with Buffalo Run Casino & Resort, Chris Tipton with Buffalo Run Casino & Resort, John & Vicky Vance with the Vance Ford Dealership in Miami, Deb Wolek with GLA, Barbara & Willie Smith with the Coleman Theatre, Jane & Willie Osborn with the Coleman Theatre, Ann Gilbert with the Coleman Theatre, Dr. Ron Gilbert with the Miami CVB & Coleman Theatre, and State Senator Charles Wyrick. Photo by Gary Crow

# Cyrus Avery Centennial Plaza and Memorial Bridge Dedication

By Brad Nickson

TULSA, OK - On August 7 one of the \$15 million Tulsa County Vision 2025 Route 66 projects was dedicated. The first major project was the Cyrus Avery Centennial Plaza and Memorial Bridge.

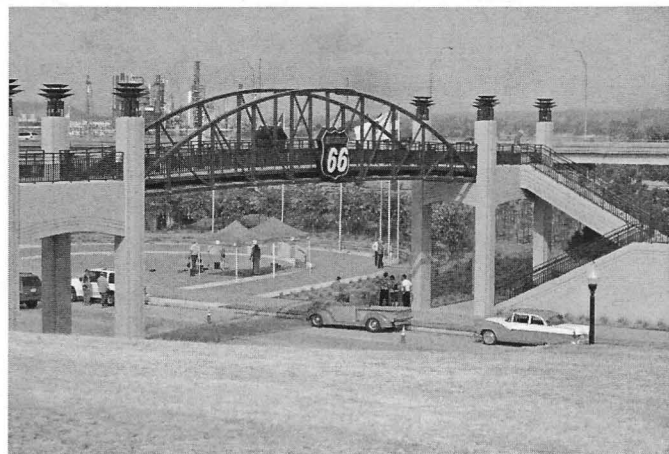


Avery Centennial Plaza: dedication in process

The plaza is located at the intersection of Southwest Boulevard (Route 66) and Riverside on the East side of the Arkansas River. You know you are at the right place when you see the pedestrian skywalk with the big Route 66 shields. (At press time, the shields have been removed for repair due to vandalism or attempted theft. They should be back soon.) The skywalk connects the plaza to the parking area across Southwest Boulevard atop the hill. The parking area at some point in the near future will also serve the Route 66 Xperience. The Route 66 Xperience will house interactive exhibits, some office/meeting space and back at the plaza, visitors will find the eight

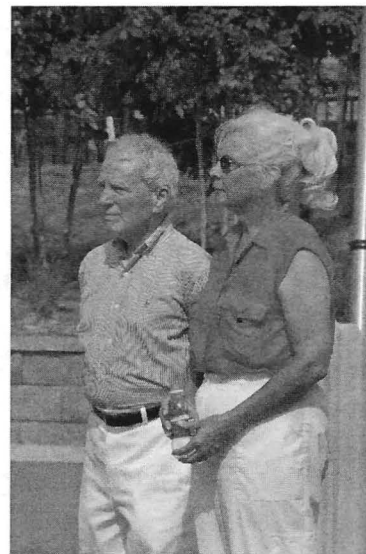


Tulsa Mayor Kathy Taylor and Michael Wallis



The Avery Plaza photographed from the parking area at the top of the hill. Parking will be for the Route 66 Xperience.

flags of the eight states that have segments of Route 66. There are also concrete pillars with bronze plaques with information about the old bridge across the Arkansas River, about Route 66 and Cyrus Avery. Early in 2009 a 150% of life-size sculpture will be installed in the plaza. The sculpture will depict Cyrus Avery, driving an early automobile, encountering a horse drawn oilfield wagon. The sculpture was supposed to be ready for the dedication, but due to health issues with the artist, the casting was delayed. The skywalk itself is quite in It is equipped with 16 LED lighting fixtures that may be programmed to display various patterns and colors of light. Its programming software is top-of-the-line, theatrical quality control. Look for lighting displays for Christmas and Fourth of July.



Cyrus Stevens Avery II and Joy Avery

The Cyrus Avery Route 66 Memorial Bridge has been cleared of vegetation, power-washed, re-sealed and stripped. Period lighting has been re-installed on the guard rails and new fencing has been installed on each end. Sadly, the surface of the bridge is not safe for pedestrians or vehicles.

*Continued on next page ...*

... (During power-washing, holes in the surface were created large enough to drop an adult into the Arkansas River.) And the money needed to put the bridge back to a safe state exceeded what Tulsa County set aside for the entire 24 mile project.

Come to Tulsa and have a look!

Photos by Brad Nickson

**The Odd Shoppe**

103-105 West Main • Sayre, OK 73662  
Crafts • Gifts • Collectibles • Antiques

Michelle Scott Phone:  
- Owner - 602-989-9192

# Our ads mean business!



Newsletter advertizing costs per issue ...

Members	Non-members
Business card: \$7.50	Business card: \$15
¼ page: \$15	¼ page: \$30
½ page: \$20	½ page: \$40
Full Page: \$30	Full page: \$60

Business members get one free business card ad upon joining, so if you are a business member and have not yet submitted a card, Please be sure and send us one! Ad deadline for the next issue of *On the Road* is January 31.

## A memo from Mike ...



Mike Hickey: Oklahoma Route 66 Association President

Most mornings, I can be found eating breakfast at Jimmy's Egg with some friends who are retired or who act like it. I mentioned I needed to do some photography work along Route 66 for the National Scenic Byways project with ODOT. Two of the fellows, Jack Bedingfield and Harry Koenig agreed to join me. Traveling the road with two retired architects, they would point out homes and buildings with the different design and construction characteristics that were typical and unique to the different eras in Oklahoma history. Like children or out of town visitors, Jack and Harry helped me see the familiar parts of "the Road" with fresh eyes.

Take someone new to *Cruising Route 66* the next time you go.



Oklahoma Route 66 Association

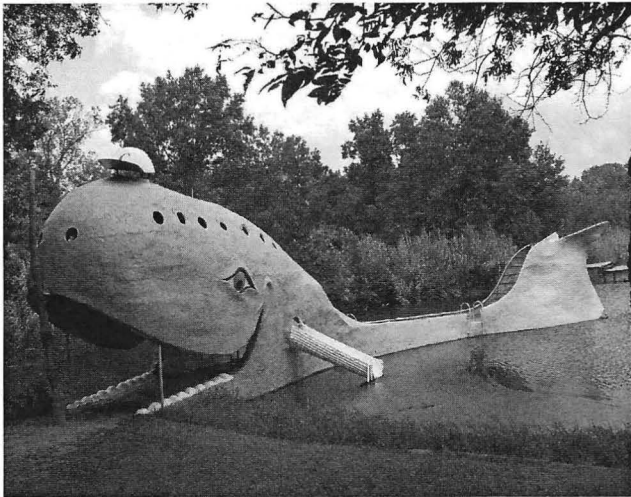
PO Box 446

Chandler, OK 74834

405-258-0008

[www.oklahomaroute66.com](http://www.oklahomaroute66.com)





# Tales from the Whale's Tail

By *Blaine Davis*

Whale Keeper and Rogers County Representative


Someone took the hook from the mouth of the Blue Whale of Catoosa during the first week of October. One breezy autumn afternoon a frequent visitor asked Blaine Davis about the missing aluminum hook that has hung beside the whale's mouth for decades.

Upon closer investigation, it was discovered that the hook had been sawed off the chain that it swung from.

"I liked to listen to that old thing jangle when the wind blew, and I will miss that." Blaine said he can't imagine what anyone would want with such a big hook.


Anyone with information is asked to contact the Catoosa police department.

**MCJERRY'S ROUTE 66 GALLERY**  
306 MANVEL, CHANDLER, OK



Specializing in Route 66 artwork  
Jerry McClanahan is the creator of the *EZ 66 Guide*, and Co-Creator of the *Route 66 Map Series*.

Home 405 258 0130 Cell 903 467 6384 mcjerry66.com  
open by luck or by appointment



**MAIN STREET BAKERY AND CAFE**  
Cakes and Specialty Desserts

**CONNIE CARPENTER**  
Owner

580-526-3430 Located on Historic Route 66  
Erick, Oklahoma  
mc\_carpenter1969@yahoo.com



## Membership Application

To join the Association or renew an existing membership, please fill out this form, include your check or money order (in US funds, on a US-based bank), and mail to the address below. We also accept MasterCard and Visa for your convenience. NOTE: A \$20 recovery fee will be charged for bad checks.

### Type of annual membership (check one)

- Individual . . . . . \$20/year
- Family . . . . . \$30/year
- Kids' Club . . . . . \$10/year
- Business . . . . . \$49/year
- \* Overseas . . . . . \$30/year

\* Higher fee pays for shipping on newsletters

Name \_\_\_\_\_

Business name \_\_\_\_\_

Child's name for Kids' Club \_\_\_\_\_

Address \_\_\_\_\_

Home phone \_\_\_\_\_

Business phone \_\_\_\_\_

Fax \_\_\_\_\_

Email \_\_\_\_\_

Credit card type, # and expiration \_\_\_\_\_

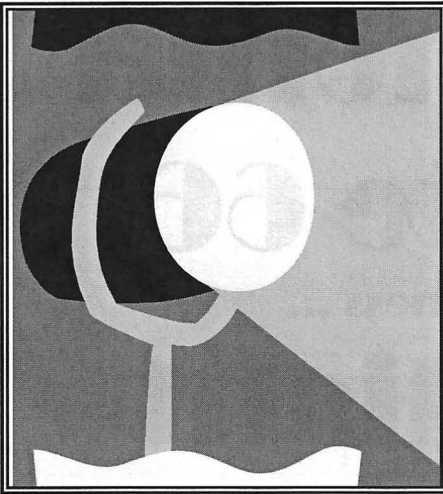
Signature \_\_\_\_\_



Signature is necessary for credit card payment.

Oklahoma Route 66 Association  
PO Box 446  
Chandler, OK 74834  
405-258-0008  
[www.oklahomaroute66.com](http://www.oklahomaroute66.com)

Deadline for newsletter info due January 31. Submit to  
okrt66association@sbcglobal.net



# Oklahoma Route 66

... Meet your Board members ...

## Spotlight

### President Mike Hickey

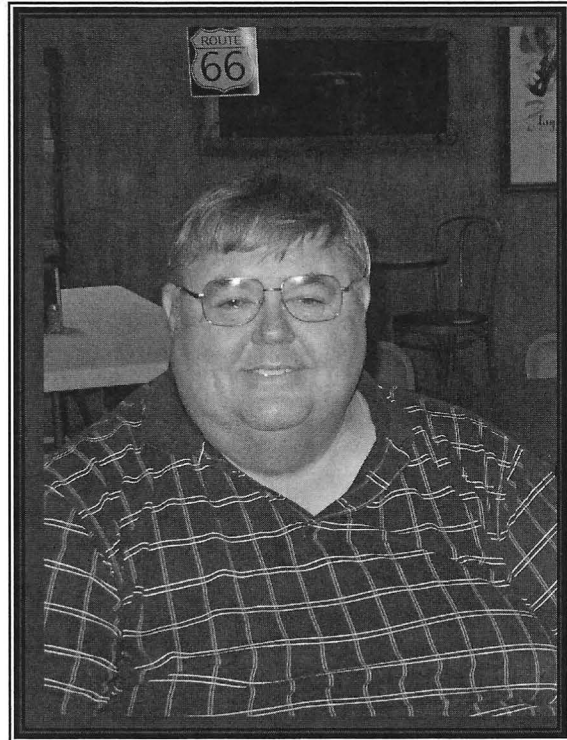
Mike Hickey is the President of the Oklahoma Route 66 Association.

Mike has lived his entire life on Route 66, and currently resides in Oklahoma City. His interests include history and photography.

Mike enjoys meeting and dealing with diverse personalities, and is skilled in community development, which fits well with the goals of the Oklahoma Route 66 Association. He particularly enjoys getting to know individuals and finds great interest in family stories.

Mike's responsibilities include presiding over quarterly board meetings, as well as reporting to the membership about behind the scenes activities of the Route 66 family, both in Oklahoma and in her sister states.

Thank you, Mike, for all the work you do for the Oklahoma Route 66 Association.



1402 N. 4th • Sayre, OK 73662 • (580) 928-9997

Deadline for newsletter info January 31.

Submit to  
[okrt66association@sbcglobal.net](mailto:okrt66association@sbcglobal.net)

Comfortable Rooms at Budget Rates

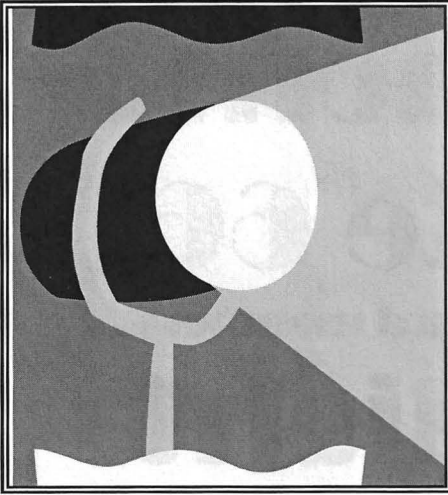
### Western Motel

315 N E Hwy 66  
Sayre, OK 73662  
Tel: (580) 928-3353  
Fax: (580) 928-9343

"Trust in the Lord with all your heart"

Priti  
Owner

I-40 Exit 25  
on Route 66



# Oklahoma

## Route 66

... Business ...

# Spotlight

## FRANKOMA POTTERY

Frankoma Pottery of Sapulpa, Oklahoma celebrated its 75<sup>th</sup> anniversary in September, 2008. Under new ownership, it is setting goals to become known across the globe for its product and service. But before we look to the future, let's step back in time for a moment, to the early 1900's.

Frankoma Pottery was founded by John Frank, a native of Chicago and university art teacher. John accepted a teaching position at the University of Oklahoma's Ceramic Art Department and taught courses in ceramics from 1927-1936.

John met and married Grace Lee Bowman during his tenure at OU, and in 1933 the couple purchased a small structure in Norman, OK in which it establish their new business, *Frank Potteries*, which later became *Frankoma Potteries*. His pottery is unique in that is created from Oklahoma red clay.

In 1938, the Franks moved to Sapulpa, and built their new plant on the legendary Route 66, just outside of town. This plant burned later that year, destroying everything except a few molds. With support from patrons and other supporters, John raised funds to rebuild.

Frankoma prospered, and John Frank was honored as *Outstanding Businessman in America* in 1971 and *Marketing Man of the Year* in 1972.

John Frank died in 1973, and his youngest daughter Joniece picked up the reins of operations. Though careful planning, John saved his molds from a devastating fire in 1983. Before his death, he designed a fireproof storage facility to house the molds. The plant was quickly rebuilt, and resumed operations in 1984.

Joe Ragosta, the newest owner, says that preserving the past is a key part of securing the future. The Company has had only three owners in its 75 year history, and

they still work at the facility. Former owners Crystal and Det Merryman help run the factory, and Donna and Joniece Frank still live in the area and work with the collectors group.

Ragosta purchased the Company in August, and is working to expand the product line, adding work from local artists and reintroducing Frankoma. "There are people all over who think Frankoma doesn't even exist anymore," he stated. "We're going to be known worldwide again very soon."

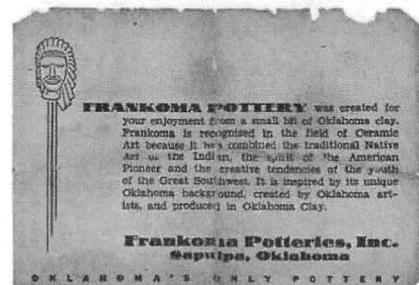
With the anniversary, Frankoma Pottery opened a new museum of 2600 pieces donated by Ray and Sherry Stoll of Oklahoma City.

Ragosta recreated the Company's showroom on Frankoma Road, offering an Oklahoma Visitors Center to interest more highway travelers and tourists.

This Christmas season, Frankoma will offer a new holiday line of plates and nativity figures, and proudly announce that its products are "Made in the USA."

Come see what Frankoma Pottery has to offer, and be sure and thank Joe and the crew for being an Oklahoma Route 66 Business Member.

**Frankoma Pottery**  
**2400 Frankoma Road**  
**Sapulpa, OK 74066**  
**918-224-5511**



Old Frankoma Packing Leaflet



# Minutes from the Oklahoma Route 66 Association quarterly board meeting

The Oklahoma Route 66 Association held its quarterly board meeting at 2pm, October 12, 2008 at the Oklahoma Tourism Information Center at 122<sup>nd</sup> and I-35 in Oklahoma City.

Meeting attended by: Mike Hickey, Kim Evans, BaLinda Miller, Marie Hanza, Frank Gierhart, Marion Davidson, Brad Nickson, LaSandra Nickson, Ron Burden, Jeanne Miller, Alvin Harrell, Blaine Davis, Carol Duncan, Doris Ray, Jill Ann Church, Betty Walker, Robert Smith, Doug Dickman, and Marilyn Emde.

Kim Evans presented the treasurer's report. The checkbook balance is \$9,580.05, of which \$1,053 is designated to go to the Preservation Fund. Jill Ann Church made motion to accept the report, BaLinda Miller seconded. Motion passed.

## OLD BUSINESS

Brad Nickson made a motion to accept the treasurer's report for last quarter. Jill Ann Church seconded. Motion passed.

Kim Evans recommended not to do a professional audit, but to instead do one through the Scissors-tail Group, by Linda Jordon, and only when the Association needs it. Mike Hickey recommended an audit, to assure everything is in order in case the Association needs it. It was discussed and decided that Linda Jordon will be contacted to conduct an audit.

Pam Lewis was not present at the October meeting. Mike and Marilyn will meet with Pam on Wednesday, October 15, 2008 to discuss the progress and projected time of the National Scenic Byways designation. Mike strongly recommended that all board members and other members consider ways to play an active role in promoting the project. He suggested that we begin preparing Chambers of Commerce, Rotary Clubs, and other community organizations to join in the State-wide celebration of the Scenic Byways. He also suggested educating car and motorcycle clubs, and contact local newspapers when information packets become available. Brad Nickson reported that there were between 7-10 vehicles at the beginning of the Fall Museum Cruise on September 20. The Cruise headed east, starting at the Sapulpa Historical Museum, then on to the Gilcrease Museum in Tulsa. The cruisers

dined at the Mexicali Border Café for lunch, then went to the Will Rogers Memorial Museum and the JM Davis Gun Museum, both in Claremore, and ended the day at Hammett House Restaurant for supper and pie. It was a good turnout. Suggestions for an improved turnout next year were more advertising and make sure there were no conflicting events.

Emily Priddy will continue to create the Trip Guide next year. Marilyn Emde announced that the Trip Guide ad forms and change forms are available. She will send out letters this year about renewals. Ads will be submitted to Emily on January 16, February 13, and March 13. There will be **absolutely** no ads accepted for the Trip Guide after March 13. Any suggestions for changes to the Trip Guide will be submitted to Marilyn. Brad Nickson suggested getting three quotes for printing. Motion made by Jill Ann Church to use photo submissions from members to choose Trip Guide cover instead of selling it to a Route 66 business. Jeanne Miller seconded. Motioned passed. There were 81 new memberships as a result of the Oklahoma Route 66 Association Membership drive. Members who received paid memberships for the next year are Jeanne Miller, Kim Evans, Marion Davidson, Doris Ray, and Jill Ann Church. A motion was made by Jill Church to do the membership drive next year between April and October. Brad Nickson seconded. Motion passed. First place winner was Kim Evans. Second place winner was Jill Ann Church. Third place winner was Jeanne Miller. Prizes will be awarded at the Annual Meeting in January. The National Trust for Historic Preservation Conference is October 21-25 in Tulsa. Marilyn will have the booth set up from October 22-24. She asked for volunteers to man the booth in the afternoons so she can attend some of the pre-entations. Preservation OK is giving a party on Monday at 7pm, and Brad Nickson will represent us at that event. Marilyn will share expenses to keep costs down.

## NEW BUSINESS

The 2009 Annual Meeting will be held at the Chandler Library on Sunday January 11. The day will start with a potluck dinner at noon, and the board meeting will commence at 1:00pm.

The 2009 Quarterly Board meetings will be held at the Oklahoma Tourism and Information Center at 2pm on Sunday April 19, Sunday July 19, and Sunday October 18.

The following officers will be up for re-election /confirmation in 2009, which will take place at the Annual Meeting. Elections include: President Mike Hickey, Eastern Vice President Cle-tus Simpson, Canadian County Representative Jerald Ashby, At-large County Rep Jeanne Miller, Lincoln County Representative Ron Burden, Tulsa County Representative Brad Nickson, and vacant positions of Blaine/Caddo County Rep and Delaware/Craig County Rep. Confirmation of officers include: Western Vice President Marie Hanza, Beckham County Representative Doris Ray, Oklahoma County Representative Alvin Harrell, At-large County Rep BaLinda Miller.

Jill Ann Church has accepted the position of Association newsletter editor when Emily Priddy stepped down from that position. Mike Hickey presented the responsibility of each County Representative to report to him, Marilyn or Jill Ann on a frequent basis concerning current events from each respective county, to be included in the newsletter. Marie Hanza suggested that the address portion of the newsletter be rotated. Marion Davidson suggested and it was decided that the Round Barn be removed from the back of the newsletter. Marilyn Emde suggested that we get involved with a recycling program through Abitibi Paper Recycling. There is no cost to participate, and paper bins will be provided at designated positions, and there is a price per pound presented to the Association for the recycled product. The membership thought it would be a good idea, and Marilyn will check into it.

Marilyn Emde asked if the Association should look into selling links to appear on the

official website. Jill Ann Church suggested and it was decided that the web link remain a perk for business members.

## OTHER BUSINESS

Carol Duncan suggested Association sponsorship for the photo contest presented by Blunck Studios in Clinton. The subject matter of the photos is Route 66 related. Carol motioned that we sponsor the event in exchange for free use of the photos for Trip Guide consideration. Kim seconded. Motion passed.

The Association needs sponsors for possible State-wide cruises. With the new membership, recruit new help for Route 66 events.

## PUBLIC COMMENTS

The Board briefly discussed the Route 66 Alliance. There was clarification made that the vote at the July meeting was to refrain from participation in the steering committee. Further clarification was made that was no official discussion or decision made about the Association's participation in the Alliance. It was pointed out that the Alliance is merely a concept at this time.

## ANNOUNCEMENTS

The El Reno Main Street Christmas Parade is December 4 at 6pm. If the Association would like to have a float in the parade, have the entry in by October 27.

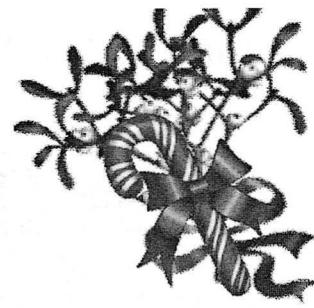
The Roger Miller Festival is October 25 in Erick.

The old Owl Drug Store in Sayre has been purchased and is now the Sayre Soda Shoppe.

Al's Route 66 Café in Sapulpa has been purchased by a family who owns two other restaurants in the area.

## ADJOURNMENT

Frank Gierhart motioned the meeting to adjourn, Brad Nickson seconded, motion passed. Meeting adjourned.



Join us  
On  
Saturday, December 6, 2008  
for our 3<sup>rd</sup> Annual Holiday Lights Cruise!!!



**4:30pm: Meet at the Hickory House BBQ**  
626 N Mission in Sapulpa  
for an early supper.

**Cruise to Redfork and Chandler Park Lights on the Hill**

**Dessert and coffee at Baxter's Interurban Grill**  
717 S Houston Ave in Tulsa

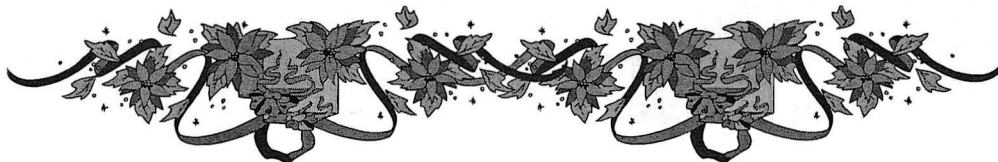
**Cruise to Rhema Bible College if time permits**  
1025 W Kenosha in Broken Arrow

**For more information, contact the  
Oklahoma Route 66 Association Office**

PO Box 446  
Chandler, OK 74834  
405-258-0008

[okrt66association@sbcglobal.net](mailto:okrt66association@sbcglobal.net)

(NOTE: Even though there is not a cost to participate in the cruise, please RSVP as soon as possible so that we can reserve enough table space at the diners, if you plan to attend. Thanks!)



# Four titles awarded in 2009 Oklahoma Route 66 Pageant

*Presented by Esther Brown*

The 2009 Oklahoma Route 66 Pageant was held on October 18 in Tulsa. The night was filled with talent, fun and surprises, as the competition brought about four title-holders at evening's end.



There were four titleholders because this year we had a special presentation for Ms Cletus Simpson. Because of her love of the Mother Road, and in honor of her 66th birthday on Route 66, she was crowned *Mrs Route 66* during our ceremony. The winners from past pageants have come to know Cletus and have a special place in their hearts for her.

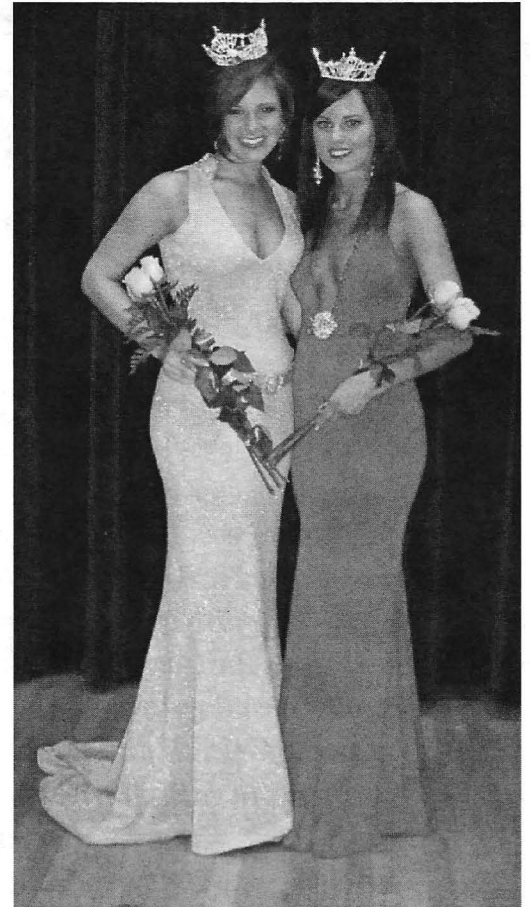


It was our honor to include Cletus in this special evening. We also want to thank the representatives of the Oklahoma Route 66

Association for sharing in the excitement of the pageant. You made the evening complete.

Simone Mullinax, the new *Miss Route 66 2009*, is from Tulsa, Oklahoma. Simone is a 20-year-old junior at the University of Arkansas. She will graduate Summa Cum Laude with a Bachelor's Degree in Communication and a double minor in Marketing and English. Simone is part of the Honors College at the University of Arkansas and a member of the Student Alumni Board. She has been a member of the National Honor Society for 3 years, on the Headmaster's Honor Roll for 3 years, and while attending high school was on the National Principal's Honor Roll all 4 years.

Austyn  
Mane  
Fulps, the new *Miss Route 66 Outstanding Teen 2009*, is a 16-year-old junior at Broken Arrow High School. Austyn plans to attend Oklahoma State University to obtain a degree in forensic science



and ultimately work for the Federal Bureau of Investigation. Jennifer Hancock, the new *Miss Indian Nation 2009*, is a lifelong resident of Oklahoma City, Oklahoma. She graduated from Westmoore High School and is currently a senior at the University of Oklahoma, majoring in Zoology/Biomedical Sciences. Jennifer's scholastic and career ambition is to attend the University of Oklahoma Medical School after receiving a bachelor's degree in Zoology/Biomedical Sciences, and become a pediatrician.



# 2008 Oklahoma Route 66 Fall Museum Cruise a Great Success

By Brad Nickson

TULSA, OK - On a pleasant September Saturday morning, several car loads of Oklahoma Route 66 Association members met to go on a museum cruise.

The morning began at the Sapulpa Historical Society; 100 E Lee, Sapulpa, OK 74066. What a fantastic place to visit! They had several volunteers on hand to answer questions and to tell informative stories about each display. Many



small groups had the

pleasure of having guided tours through the different rooms and all three floors. Here's a description of all they have from the society's website

[www.sapulpahistoricalociety.com](http://www.sapulpahistoricalociety.com):

*"We have created a small village to showcase some of Sapulpa's early businesses. Included are an early-day blacksmith shop, a sheriff's office, the John F. Egan General Merchandise Store, Rock Creek Indian Methodist Church, Eucler Mission Boarding School, and a diorama of the Frisco Railroad shops that were located here in the early 1900s.*

*Other displays include Creek and Eucler Native American artifacts, an early territorial court house, military room, and some dedicated to prominent Sapulpan's."*



From the Sapulpa Historical Society, the group headed to Tulsa's Gilcrease Museum; 1400 North Gilcrease Museum Road Tulsa, OK 74127. On display were two

photographs from Ansel Adams and the recent Gilcrease acquisition of 101 Ranch items. The permanent exhibit contains pieces of art related to the United State's western heritage. If you were not on the cruise with us, you should make a trip to Gilcrease and see the Adams exhibit and 101 Ranch exhibits. They will be in town until January.

After a stop for lunch at Mexicali Border Cafe in the historic Brady district in Tulsa, it was off to Claremore and the Will Rogers Memorial; 1720 West



**Will Rogers**  
MEMORIAL MUSEUMS  
Claremore/Oologah, Oklahoma



Will Rogers Blvd Claremore, OK 74018. Oklahoma's favorite son had quite a career in a wide variety of types of entertainment. With time to kill before our

dinner reservations, we made an unscheduled stop at the J M Davis Gun Museum; 333 Lynn Riggs Blvd Claremore, OK 74018.



I personally believe you could spend an entire day at this one stop and still not see everything!

That brings us to our final stop of the cruise, Hammett House; 1616 West Will Rogers Blvd Claremore OK 74018. What a great meal, visiting with friends and seeing all of that very tall pie.

I'm looking forward to stopping in for another feast.

Photos and ads from the websites of each place we visited.





# Oklahoma Route 66 Association Business Directory



Please patronize our business members. When you do, let them know that you are also a member of the Association.

## COMMERCE

**Allen's Fillin' Station**  
101 S Main  
Commerce, OK 74339

## MIAMI

**Chapters**  
31 N Main St  
Miami, OK 74354  
918-540-0468

**Coleman Theatre**  
103 N Main St  
Miami, OK 74354  
918-540-2425

**Copper Creek Flea Market**  
606 N Main  
North Miami, OK 74344  
918-542-1313

**Miami CVB**  
PO Box 760  
Miami, OK 74354  
918-542-4435

**Nott's Grocery**  
604 S Main St  
Miami, OK 74354  
918-542-5390

**Pizza Hut Express & Pizza Hut of Miami**  
PO Box 1247  
Miami, OK 74354  
918-540-2471  
918-542-6642

**Route 66 Vintage Iron**  
915 N Main St  
Miami, OK 74354  
918-542-6170

**Waylan's Ku-Ku Burger**  
915 N Main St  
Miami, OK  
918-542-1696

## AFTON

**Afton Station & Route 66 Packards**  
12 SE First St  
Afton, OK 74331  
918-257-4304

**Town of Afton**  
PO Box 250  
Afton, OK 74331

## VINITA

**Holiday Inn Express**  
232 S 7<sup>th</sup>  
Vinita, OK 74301  
918-256-4900

**Park Hills Motel & RV Park**  
438415 E Hwy 60  
Vinita, OK 74301  
918-256-5511

**Rancher Convenience Store & Deli**  
434115 E Hwy 66  
Vinita, OK 74301  
918-256-7342

## Summerside Vineyards & Winery

441251 E Historic Rte 66  
Vinita, OK 74301  
918-256-3000

**Vinita Area Chamber**  
125 S Scaper  
Vinita, OK 74301  
918-256-7133

## CHELSEA

**Chelsea Area Chamber**  
618 Pine PO Box 292  
Chelsea, OK 74016  
918-789-2567

**Chelsea Motor Inn**  
321 E Layton  
Chelsea, OK 74016  
918-789-3437

**Main Street Diner**  
251 W Sixth  
Chelsea, OK 74016  
918-789-2001

**Oak Hills Winery & Vineyards**  
7070 S 4240 Rd  
Chelsea, OK 74016  
918-789-WINE {9463}

**Southern Belle Flea Market**  
426 Walnut  
Chelsea, OK 74016  
918-789-5212

## CLAREMORE

**Claremore Motor Inn**  
1709 N Lynn Riggs Blvd  
Claremore, OK 74017  
918-342-4545

**Claremore CVB**  
419 W Will Rogers Blvd  
Claremore, OK 74017  
918-341-8688

**Days Inn Claremore**  
1720 S Lynn Riggs Blvd  
Claremore, OK 74017  
918-343-3297

**JM Davis Gun Museum**  
333 N Lynn Riggs Blvd  
Claremore, OK 74018  
918-341-5707

**Rogers County Historic Society**  
PO Box 774  
Claremore, OK 74018  
918-342-1127

**The Nut House**  
26677 S Hwy 66  
Claremore, OK 74019  
918-266-1604

**Will Rogers Memorial**  
1720 W Will Rogers Blvd  
Claremore, OK 74017  
918-343-8118

## CATOOSA

**The Blue Whale**  
PO Box 1300  
Catoosa, OK 74015  
918-694-7390

## TULSA

**Desert Hills Motel**  
5220 E 11<sup>th</sup> St  
Tulsa, OK 74112  
918-834-3311

**El Rancho Grande**  
1629 E 11<sup>th</sup> St  
Tulsa, OK 74120  
918-584-0816

**Lyon's Indian Store**  
401 E 11<sup>th</sup> St  
Tulsa, OK 74120  
918-582-6372

**Midtown Cottage Bed & Breakfast**  
1445 S Oswego  
Tulsa, OK 74112  
918-691-1912

**Miss Route 66 Scholarship Pageant**  
7714 S 92<sup>nd</sup> East Ave  
Tulsa, OK 74133  
918-728-7121

**Ollie's Station Restaurant**  
4070 Southwest Blvd  
Tulsa, OK 74107  
918-446-0524

**Paintmaster Collision**  
5950 E 11<sup>th</sup> St  
Tulsa, OK 74112  
918-836-8668

**RedFork Main Street**  
PO Box 570978  
Tulsa, OK 74157  
918-445-4457

**Rose Bowl Event Center**  
7419 E 11<sup>th</sup> St  
Tulsa, OK 74112  
918-298-0048

**Route 66 Harley-Davidson**  
3637 S Memorial  
Tulsa, OK 74145  
918-622-1340

**Sandusky Ave Christian Church**  
1101 S Sandusky Ave  
Tulsa, OK 74112-5219  
918-834-4427

**Scissors Tail Group**  
3704 Southwest Blvd  
Tulsa, OK 74107  
918-583-2333

**Tulsa Regional Early Ford V8 Club of America**  
PO Box 4109  
Tulsa, OK 74159

## SAPULPA

**Cooper Oaks B&B**  
7806 Hwy 97  
Sapulpa, OK 74066  
918-224-3986

**Dewey Street Market**  
209 E Dewey  
Sapulpa, OK 74066  
918-227-4508

**Frankoma Pottery**  
2400 Frankoma Rd  
Sapulpa, OK 74066  
918-224-5511

**The Frame Shoppe**  
110 E Dewey  
Sapulpa, OK 74066  
918-224-1767

**Freddie's BBQ & Steakhouse**  
1425 New Sapulpa Rd  
PO Box 904  
Sapulpa, OK 74067  
918-224-4301

**Happy Burger**  
215 N Mission  
Sapulpa, OK 74066  
918-224-7830

**Hickory House BBQ**  
262 N Mission  
Sapulpa, OK 74066  
918-224-7830

**Sapulpa Chamber**  
101 E Dewey  
Sapulpa, OK 74066  
918-224-0170

**Sapulpa Historical Society**  
100 E Lee Ave PO Box 278  
Sapulpa, OK 74066  
918-224-4871

**Sapulpa Main Street**  
101 E Dewey  
Sapulpa, OK 74066  
918-224-5709

**Sapulpa Trolley & Rail**  
701 E Dewey  
Sapulpa, OK 74066  
918-224-1515

**Tulsa-Sapulpa Union Railway**  
701 E Dewey  
Sapulpa, OK 74066  
918-224-1515

**Turnpike Wrecker**  
11902 S 161<sup>st</sup> West Ave  
Sapulpa, OK 74066  
918-224-4422

## BRISTOW

**Bristow Route 66 Cottage**  
308 S Maple  
Bristow, OK 74010  
918-850-3083

**Bristow Chamber**  
Old Railroad Place  
PO Box 127  
Bristow, OK 74010  
918-367-5151

**Granny's Emporium**  
709A S Roland  
Hwy 66 West  
Bristow, OK 74010  
918-367-1727

**Hummel Hideaway Homes**  
424 S Rowland  
Bristow, OK 74010  
918-519-3510

**Jackson Auto Repair**  
PO Box 753  
Bristow, OK 74010  
918-367-3233

**Russ' Ribs**  
223 S Main St  
Bristow, OK 74010  
918-367-5656

## DEPEW

**Spangler's Grocery**  
322 S Main  
Depew, OK 74028  
918-324-5472

**Murder Mystery Mixer**  
23782 S 433<sup>rd</sup> W Ave  
Depew, OK 74028  
918-850-3083

## STROUD

**Clovis Insurance Agency**  
PO Box 270  
Stroud, OK 74079

918-968-2552  
**P&G Originals**  
3752 E Hwy 66  
Stroud, OK 74079

918-290-9779  
**Rock Café**  
114 W Main  
Stroud, OK 74079

918-968-3990  
**Shoe Tree Trading Post**  
3750 E Hwy 66  
Stroud, OK 74079

918-968-0223  
**Sisters Consignments  
ETC**  
307 W Main  
Stroud, OK 74079

918-987-1747  
**Stroud Chamber**  
216 W Main  
Stroud, OK 74079

918-968-3321  
**Territory Cellars**  
1521 N Hwy 99 Suite 1  
Stroud, OK 74079

918-968-2575  
**The Wine Village**  
405 W Main  
Stroud, OK 74049

## DAVENPORT

**Central Cellular**  
PO Box 789  
Davenport, OK 74026

918-377-2262  
**Central OK Telephone CO**  
PO Box 789  
Davenport, OK 74026

800-252-8854  
**Dan's Bar-B-Que**  
PO Box 561  
Davenport, OK 74026

918-377-2288  
**Davenport Chamber**  
PO Box 66  
Davenport, OK 74026

800-252-8854  
**Marketplace Insurance**  
203 Broadway  
Davenport, OK 74026

918-377-2355  
**Old Mother Road  
Floral & Gifts**  
1025 N Broadway  
Davenport, OK 74026

918-377-2966

## CHANDLER

**Chandler Chamber**  
804 Manvel Ave PO Box 561  
Chandler, OK 74834  
405-258-0673

**Chandler Route 66  
Interpretive Center**  
400 E Route 66  
Chandler, OK 74834  
405-258-1300

**Chandler Tax Service**  
100 Steele Ave  
Chandler, OK 74834  
405-258-0593

**Community Thrift Shop of Chand-  
ler**  
921 Manvel Ave  
Chandler, OK 74834  
405-258-8258

**The Ferrell Company**  
102 W 8<sup>th</sup> St  
Chandler, OK 74834  
405-258-7433

**IBC Bank**  
1804 E 1<sup>st</sup> St  
Chandler, OK 74834  
405-258-2351

**LD's Automotive**  
PO Box 486  
Chandler, OK 74834  
405-258-2120

**Lincoln County  
Historical Society**  
719 Manvel  
Chandler, OK 74834  
405-258-2425

**McJerry's Route 66 Gallery**  
310 Manvel Ave  
Chandler, OK 74834  
903-467-6384

**Randy Bowen Chevrolet**  
1201 Manvel Ave  
Chandler, OK 74834  
405-258-0055

**Subway**  
916 Manvel Ave  
Chandler, OK 74834  
405-258-0824

## LUTHER

**The Boundary on 66**  
16001 E Hwy 66  
Luther, OK 73054

**ARCADIA**  
Arcadia Tag & Title  
PO Box 253  
Arcadia, OK 73007  
405-396-0824

**Arcadia Historical &  
Preservation Society**  
Box 134  
Arcadia, OK 73007  
405-396-2398

**Biker Shak**  
309 E Hwy 66  
Arcadia, OK 73007  
405-396-2100

**Coffee Creek  
Christmas Tree Farm**  
13899 E Coffee Creek Rd  
Arcadia, OK 73007  
405-396-2282

## Pops

660 W Highway66  
Arcadia, OK 73007  
405-928-7677

## EDMOND

**Anderson Productions**  
PO Box 3461  
Edmond, OK 73083  
405-341-1646

**Edmond CVB**  
PO Box 2970  
Edmond, OK 73083  
405-216-7781

**Edmond Historical Society**  
432 S Boulevard  
Edmond, OK 74034  
405-340-0078

**Fairfield Inn and Suites**  
301 Meline Drive  
Edmond, OK 73034  
405-341-4818

## OKLAHOMA CITY

**66 Bowl**  
3810 NW 39<sup>th</sup> Expressway  
Oklahoma City, OK 73112  
405-946-3966

**Collision Clinic**  
608 NW 63<sup>rd</sup> PO Box 54405  
Oklahoma City, OK 73154  
405-848-7035

**Home Savings and Loan**  
3301 S Western  
Oklahoma City, OK 73109  
405-634-1445

**Oklahoma Hot Rod Assn**  
PO Box 890591  
Oklahoma City, OK 73189

**Vorhees & Vorhees PC**  
7701 S Western Ave Suite 201  
Oklahoma City, OK 73139  
405-682-5800

**Western Trail Trading Post**  
9100 N Western  
Oklahoma City, OK 73122  
405-842-8306

## WARR ACRES

**City of Warr Acres**  
5930 NW 49<sup>th</sup> St  
Warr Acres, OK 73122  
405-789-2892

## BETHANY

**Bethany Antique Mall**  
3909 N College Ave  
Bethany, OK 73008  
405-495-7091

**City of Bethany**  
6700 NW 36<sup>th</sup> St  
Bethany, OK 73008  
405-789-5005

**Holiday Inn Express**  
7840 NW 39<sup>th</sup> Expressway  
Bethany, OK 73008  
405-787-6262

**Native America Gallery and Gifts**  
3823 N College  
Bethany, OK 73008  
405-789-4300

**Performance Cycle**  
6200 NW 39<sup>th</sup> Expressway  
Bethany, OK 73008  
405-787-4688

**Route 66 Burger Shack**  
7100 NW 39<sup>th</sup> Expressway  
Bethany, OK 73008  
405-603-8100

**Sparkles**  
3933 N College  
Bethany, OK 73008  
405-787-3933

## YUKON

**Laser Expedition #**  
3201 N Richardson Rd  
Yukon, OK 73099  
405-350-3366

## EL RENO

**Bill and Clara's Home and Ranch**  
2701 W 10<sup>th</sup>  
El Reno, OK 73036  
405-262-6651

**Diffie Ford Lincoln Mercury**  
1681 E I-40  
El Reno, OK 73036  
405-262-4546

**El Reno Chamber**  
206 N Bickford  
El Reno, OK 73036  
405-262-1188

**El Reno CVB**  
PO Box 606  
El Reno, OK 73036  
405-262-8687

**Fort Reno Visitors Center**  
7107 W Cheyenne St  
El Reno, OK 73036  
405-262-5291

**Larry Nance Photography**  
113 S Bickford  
El Reno, OK 73036  
405-262-3975

## CALUMET

**Bethany Kars**  
24825 W Hwy 66  
Calumet, OK 73014  
405-615-3188

**Calumet Chamber**  
118 W 2<sup>nd</sup> St PO Box 241  
Calumet, OK 73014  
405-893-2323

## WEATHERFORD

**Comfort Inn & Suites**  
1311 E Main  
Weatherford, OK 73096  
580-772-9100

**Cummins Pontiac Buick GMC**  
I-40 at Airport Rd  
Weatherford, OK 73096  
580-772-5521

**Doc's Longhorn Trading Post**  
1511 E Main  
Weatherford, OK 73096  
580-772-2277

**Downtown Diner**  
123 W Main  
Weatherford, OK 73096  
580-744-1234



**Heartland Museum**  
1600 S Frontage Rd  
Weatherford, OK 73096  
580-774-2212

**P-Bar Farms B&B**  
10108 N 2440 Rd  
Weatherford, OK 73096  
405-556-1069

**Premier Chevrolet Cadillac**  
PO Box 231  
Weatherford, OK 73096  
580-772-3351

**Rick Koch Oil Company**  
PO Box 685  
Weatherford, OK 73096  
580-772-6076

**Route 66 Thunderbirds**  
2121 E Main  
Weatherford, OK 73096  
580-772-6666

**Weatherford Chamber**  
PO Box 857  
Weatherford, OK 74096  
580-772-7744

### CLINTON

**Cherokee Trading Post**  
23107 N Frontage Rd  
Clinton, OK 73601  
580-323-0001

**Clinton Chamber**  
101 S 4<sup>th</sup> St  
Clinton, OK 73601  
580-323-2222

**Oklahoma  
Route 66 Museum**  
2229 W Gary Blvd  
Clinton, OK 73601  
580-323-7866  
**White Dog Hill**  
22901 N Route 66  
Clinton, OK 73601  
580-323-6922

### ELK CITY

**Elk City CVB**  
PO Box 972  
Elk City, OK 73648  
580-225-0207

**Nat'l Route 66 Museum**  
2717 W 3<sup>rd</sup>  
Elk City, OK 73648  
580-225-6266

**KOA Campgrounds**  
I-40 Exit 50  
Elk City, OK 73644  
580-592-4409

### SAYRE

**The Rosebud Cottage**  
706 N 4<sup>th</sup>  
Sayre, OK 73662  
580-729-1160

**Sayre Chamber**  
PO Box 474  
Sayre, OK 73662  
580-928-3386

**Sayre Main Street**  
PO Box 364  
Sayre, OK 73662  
580-928-2514

**Stardust Restaurant**  
611 NE Highway 66  
Sayre, OK 73662  
580-928-2277

### ERICK

**C&K Quick Stop**  
306 W Roger Miller Blvd  
Erick, OK 73645  
580-526-3566

**Oleta's Gift Shop**  
801 S Elm  
Erick, OK 73645  
580-526-3009

**Reed's Route 66  
Antiques and Silks**  
201 E Roger Miller Blvd  
PO Box 44  
Erick, OK 73645  
580-526-3998

**Roger Miller Museum**  
101 E Roger Miller Blvd  
PO Box 464  
Erick, OK 73645  
580-526-3833

**Main Street Bakery and Café**  
112 S Sheb Wooley  
Erick, OK 73645

### ELSEWHERE

**Image Everywhere**  
1423 E Concord Place  
Broken Arrow, OK 74012  
981-355-1731

**Peoria Mini Storage  
& Tire Service**  
47 E Main  
Peoria, OK 74363  
918-533-1151

**Midtown RV Services**  
959 W 126<sup>th</sup> St  
Jenks, OK 74037  
918-625-5114

**Vic's**  
123 N 2<sup>nd</sup> St  
Guthrie, OK 73044  
405-282-5586

**Sanner Pipe & Salvage**  
PO Box 550  
Velma, OK 73491  
580-444-2679

**Cozy Dog Drive Inn**  
2935 S 6<sup>th</sup> St  
Springfield, IL 62703

**Ester Lee Motel**  
3803 SW Hwy 101  
Lincoln City, OR 79367  
541-996-3606

**Route 66 Sodas LLC  
Route 66 Root Beer**  
PO Box 276  
Wilmington, IL 60481  
815-458-2594  
877-667-6327

**University of Utah  
Mariott Library**  
295 South 1500 East  
Salt Lake City, UT 84112  
801-581-7744

### SISTER ASSOCIATIONS

**Route 66 Association of Illinois**  
2743 Veterans Pkwy #166  
Springfield, IL 62704

**Route 66 Assn of Missouri**  
PO Box 8117  
St Louis, MO 63156  
[furvon66@earthlink.net](mailto:furvon66@earthlink.net)

**Route 66 Association of Kansas**  
PO Box 66  
Riverton, KS 66770  
620-848-3330  
[route66@kans.com](mailto:route66@kans.com)

**Kansas Historic Route 66  
Association**  
PO Box 66  
Baxter Springs, KS 66713  
620-856-2066  
[heritagectr@embarqmail.com](mailto:heritagectr@embarqmail.com)

**Old Route 66 Assn of Texas**  
PO Box 66  
McLean, TX 79057  
806-779-2225

**New Mexico Route 66 Assn**  
1415 Central Ave NE  
Albuquerque, NM 87106  
[info@rt66nm.org](mailto:info@rt66nm.org)

**Historic Route 66 Assn of Arizona**  
PO Box 66  
Kingman, AZ 86402

**California Historic Route 66 Assn**  
PO Box 1359  
Rialto, CA 92377  
909-874-9448  
[kickinon66@msn.com](mailto:kickinon66@msn.com)

**Canadian Route 66 Association**  
PO Box 81123  
Burnaby, BC V5H4K2  
Canada  
604-434-1818  
[Route66kicks@mac.com](mailto:Route66kicks@mac.com)

**Dutch Route 66 Association**  
<http://www.rte66.nl>  
[info@rte66.nl](mailto:info@rte66.nl)  
+31-6-4402-8346

**NOTE: Past due Business  
Memberships ARE NOT  
listed. List was current at  
press time.**



Oklahoma Route 66 Association  
PO Box 446  
Chandler, OK  
74834

BULK RATE  
US POSTAGE PAID  
CHANDLER, OK 74834-3851  
PERMIT #66

December 2008 issue

Please check your  
expiration date! →  
If it is highlighted, your  
membership has expired  
or is getting ready to.  
Please renew now!

*This newsletter was printed by: Kinko's \* 101 E Second St \* Edmond*

## BUSINESS SPOTLIGHT

Frankoma Pottery

