



The Official
Newsletter
of the
Oklahoma
Route 66
Association

On the Road

2012 Board

President: Mike Hickey
5304 NW 111 St., OKC, OK 73162
405-413-0266 (cell)

Eastam VP & Tulsa Rep: Brad Nickson
4413 S. Sandusky Ave., Tulsa, OK 74135
918-231-9539 (cell)

Western VP: Vacant

Secretary & OK Rep: Deborah Blair
3801 Pawnee, Edmond, OK 73013
405-623-9125 (cell)

Treasurer: Vacant

Canadian/Caddo/Blaine
District Rep: Larry Nance
113 E. Bickford, El Reno, OK 73026
405-262-3975 (work)

Creek District Rep: Frank Gierhart
110 East Dewey, Sapulpa, OK 74066
918-638-6212 (cell)

Custer/Washita/Beckham
District Rep: Marion Davidson
1324 Grandview Dr., Weatherford, OK 73096
580-772-6666 (cell)

Lincoln District Rep: Ron Burden
P.O. Box 261, Davenport OK 74026
918-377-2355 (work)

Ottawa District Rep: Laurel Kane
1513 918-267-4044 (work)

Rogers/Delaware/Craig
District Rep: Blaine Davis
P.O. Box 1300, Catoosa, OK 74015
918-694-7390 (cell)

At-Large Representatives
Jeanne Miller
P.O. Box 884, Davenport, OK 74026
918-399-9476 (cell)

Emily Priddy
4014 W. 42nd Place, Tulsa, OK 74107
918-408-3665 (cell)

Executive Director
Marilyn Emde
400 East Route 66, Chandler, OK 74834
405-258-0008



this issue

Economic Impact Study P.1

Round Barn 20th Anniversary P.2

Oklahoma Book Awards P.3

2012 Election of Officers P.4

Clinton OK Route 66 Museum P.5

Route 66 Economic Impact Study

A recently completed economic impact study shows that \$132 million per year is spent in communities along historic Route 66. This information sheds new light on the importance of heritage tourism and historic preservation along Route 66 as a contributor to local, state, and national economies. Route 66, which runs from Chicago to Santa Monica is America's most celebrated automobile highway, and a symbol of twentieth-century American culture and history. The study was directed by professor David Listokin of the Edward J. Bloustein School of Planning and Public Policy at Rutgers.

The study demonstrates the tremendous influence tourists have on the economies of towns and cities along the route: More than 85% of Route 66 travelers visit historic places and museums, and these tourists spend \$38 million dollars a year in these communities. Heritage preservation, through Main Street revitalization programs and museums, add another \$94 million in annual investments.

The national impact is an annual gain of 2,400 jobs, \$90 million in income, \$262 million in overall output, \$127 million in gross domestic product and \$37 million in tax revenues.

At the local level, the restored Route 66-themed motel, restaurant, and gift shop anchor the downtown in many small communities and

bring new life and revenue to towns once bypassed by the Interstate Highway System. In other words, preserving Route 66 is a good investment with significant community and economic benefits.

The study draws on a wide array of empirical information on Route 66 from the national decennial census, a first-ever comprehensive survey of Route 66 travelers, a Route 66 museum survey, Route 66 case studies, and other sources. The result is a better understanding of the mosaic and dynamics of America's Main Street, and the identification of opportunities to improve preservation of this resource and to enhance its already significant heritage tourism and economic contribution.

A Synthesis of Findings of the Route 66 Economic Impact Study, along with a two-volume Technical Report, is available at: <http://www.wmf.org/deeper/publication/route-66-economic-impact-study-synthesis-findings>.

Information for this article provided by: National Park Service Route 66 Corridor Preservation Program Kaisa Barthuli, Program Manager



Chandler, OK

www.oklahomaroute66.com

A FOND FARE- WELL TO 3 BOARD MEMBERS

Volunteers are the only human beings on the face of the earth who reflect this nation's compassion, unselfish caring, patience, and just plain loving one another. ~Erma Bombeck.

Amanda Davis resigned from the OK Route 66 board after serving as the Ottawa District Rep from January 2008 to January 2012. We would like to thank her for the volunteer hours spent on behalf of this association and OK Route 66.



Doris Ray was appointed as Representative At-Large 2011. Before that she was the Beckham District Rep from 2008-10. She felt she needed to step down this past January. We wish her the best and hope she will be no stranger to the Mother Road.



Jill Ann Church contributed her creative talents by serving as the Newsletter editor from May 2009 to May 2011. She took on the responsibilities of secretary from January 2008 until the fall of 2011. It is said that those who can...do, those who can do more...volunteer. Thank you for doing more.



20 Years Restored Celebration

Constructed in 1898

Restoration began 1988

Dedicated in 1992

The Historic Round Barn in Arcadia, OK held the 20th anniversary celebration of the restoration and dedication of the Barn, Saturday, April 14, from 10 a.m. to 5 p.m. All the events were free and open to the public,

The activities throughout the day included live bluegrass and folk music performances, jam sessions, square dancing exhibitions, a classic car cruise-in, and a ceremony at 2 p.m. with speakers which included Lieutenant Governor Todd Lamb, State Representative Lewis Moore, and the Deputy State Historic Preservation Officer Melvena Heisch.

The sentimental highlight was a special award which was presented to Beverly White, the first president of the Arcadia Historical and Preservation Society. She received a well deserved standing ovation.

The heavy winds didn't stop the celebrators from traveling to the food concessions on the grounds which were provided by the POPS mobile food truck.

The celebration would not have been complete without story telling from the resident Pro "Sam Gillaspay" and a heartfelt nod of appreciation to "Butch" the Arcadia caretaker for all his help throughout the years.

In 2011, the Round Barn documented 31,000 visitors, representing all 50 states, and 57 countries. Since the barn's restoration and opening 20 years ago, nearly 500,000 visitors have stopped in for a peek at this truly unique attraction. Round Barn spokesman Jimmy Blue credits the

tireless efforts and hours given by volunteers over the years to keep the doors of the Round Barn open for viewing. "This structure is truly an architectural marvel to see, particularly the impressive ceiling that displays intricate woodworking creating the dome-shaped roof," says Blue. The Round Barn is open daily from 10 a.m. to 5 p.m. with free admission and volunteers offering guided tours, as needed. A gift shop on site offers a variety of Round Barn and Route 66 merchandise. Farm implements are displayed on the grounds, and the upstairs loft can be rented for parties, meetings or special events.



Board & guests at Round Barn 20th Anniversary Celebration. Back row- Linda Simonton, Vi Davis, Larence Robison, Butch Breger and Jimmy Blue. Front row Lt. Gov. Todd Lamb, Mr. Sam, Representative Lewis Moore and Sheriff Whetsel.



23rd Annual Oklahoma Book Award Winners Announced



The 23rd Annual Oklahoma Book Awards program was held Saturday, April 14, 2012 at the Jim Thorpe Museum. This year 121 books were entered, and 35 finalists were selected from the following categories: children/young adult, design/illustration, fiction, non-fiction, and poetry. The Winners:

Children's: "Chikasha Stories, Volume One: Shared Spirit," by Glenda Galvan of Sulphur

Young Adult: "The Revenant," by Sonia Gensler of Norman,

Poetry: "Leaving Holes and Selected New Writings," by Joe Dale Tate Nevaquaya of Norman,

Design: "The Eugene B. Adkins Collection: Selected Works," designed by Eric Anderson of Norman,

Illustration/Photography: "Ilimpa'chi' (We're Gonna Eat!): A Chickasaw Cookbook," with photography by Sanford Mauldin of Norman

Fiction: "Along the Watchtower," by Constance Squires of Edmond,

The Oklahoma Route 66 Associ-

ation extends award congratulations to Shellee Graham for being one of the 5 finalists in the DESIGN/ILLUSTRATION category.

Her book titled "Route 66 Sightings," photographed and designed by Shellee Graham, Jerry McClanahan, and Jim Ross, all of Arcadia; and published by Ghost Town Press, Arcadia. \$49.95

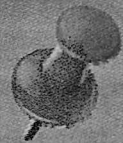
"Route 66 Sightings" eschewed the typical east-to-west format, or a laundry list of photos of the road's icons.

Instead, the book serves as "a celebration of the magic and magnificence of a highway."

Book Review- RonWarnick

Ed Klein
Owner
Preservationist
www.route66world.com
info@route66world.com
visit • browse • learn • share • buy • preserve

Where Order, Online and Convenience Count
Mike & Stevia Reed
918-73-BYTES 918-605-8764
18 S. Water Street
Sapulpa, OK 74096
Breakfast, Lunch, Anytime
brews66.com brewsbytes@att.net



A MEMO
FROM MIKE..

MIKE HICKEY

OK ROUTE 66 ASSOCIATION
PRESIDENT

Fellow Roadies,

This May 26, your association will be inducting two new members of the Oklahoma Route 66 Hall of Fame. This will be a great opportunity to visit with old friends and fellow "roadies" in Clinton during their Route66 Festival. The Route 66 Museum will be celebrating their grand opening of their remodeled facility. The Hall of Fame induction at the museum will be a 2 pm.

I look forward to seeing you there.

Mike

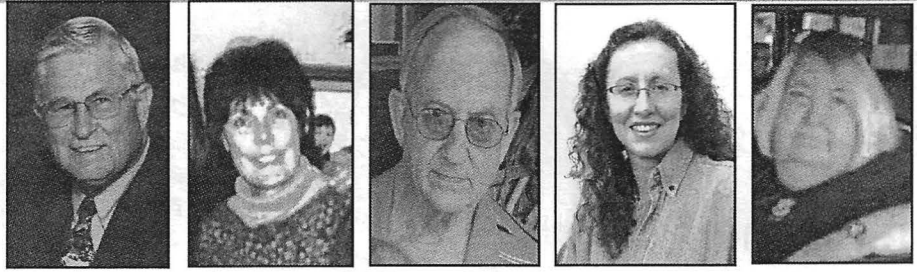
Ask about extended drain
AMSOIL saves you money
INDEPENDENT DEALER
Gene & Betty Pyeatt
16701 E. Newton Pl
Tulsa, Oklahoma 74116
(918) 234.3543 (918) 260.6850
genepyeatt@aol.com
www.lubedealer.com/genepyeattsynthetic
Full line of specialized synthetic lubricants & filters

**PHOTOGRAPHING
THE MOTHER
ROAD: A TRIP
DOWN ROUTE 66**

On October 15, 2011 at 7:30 a.m., 17 photographers loaded a bus with camera gear at Tulsa Community College, for a day trip down Route 66. The guide was our own Brad Nickson, an accomplished photographer and Eastern Vice President of the Oklahoma Route 66 Association. Natalie Green of Apertures Photograph, 1936 S. Harvard, Tulsa, OK was the Photography Instructor for this fun excursion.

Apertures Gallery hosted the Opening Reception of "Photographing the Mother Road: A Trip Down Route 66" on Friday, February 24, 2012 from 6 to 9 p.m. The turn out was wonderful.

If you were not able to make the opening you will get a second chance! The show will travel to the OK Route 66 Interpretive Center in Chandler, OK then to the TCC Gallery SE Campus, OK Route 66 Museum in Clinton, then to the J.M. Davis Gun Museum in Claremore.



OK Route 66 Board Fills 2012 Vacancies

In January of each year the OK Route 66 Association holds elections during the annual board meeting.

The Board of Trustees comprises the elected Officers of the Association and the District Representatives. Each elected Board Member will serve a two (2) year term that coincides with the Association's annual year.

An Officer position shall be officially vacant if the member resigns, fails to pay dues, or misses three (3) unexcused consecutive Board meetings or is negligent in his/her duties outlined in the bylaws.

The open positions were:
Western Vice President
Treasurer
Secretary
Ottawa District Representative
Custer/Washita/Beckham Rep.
Creek District Representative
One (1) At-Large Representative

There were no nominations for Western Vice President or Treasurer so the positions will remain vacant.

The Secretary position has been filled by Deborah Blair. Deborah is the owner of Pin EFX in Edmond, OK and has served as the Oklahoma District Representative since 2011.

Laurel Kane has agreed to serve as the Ottawa District Representative.

She is the owner of Afton Station, in Afton OK, a Route 66 memorabilia and antique car museum

Marion Davidson of Weatherford, OK a Charter Member of the OK Route 66 Association, will serve another term as Custer/Washita/Beckham District Representative. He has served in this capacity since 2004.

Frank Gierhart of Sapulpa, OK will return as Creek District Representative. Frank has served as District Rep. since 2004 and has made great strides with the Keep Oklahoma Beautiful program in Creek county.

The At-Large Representative position was filled by Emily Priddy. Emily started writing articles for our Route 66 newsletter in 2002. Emily served as Eastern Vice President in 2005. Shortly after taking a teaching position Emily felt the need to scale back her involvement but the love of the Mother Road was ever present as she continued to supervise the production of the Trip Guide. We welcome her enthusiasm and expertise.

COLLISION
FOR WRECKS
CLINIC
www.collisonclinicokc.com

Lee Lawrence
Owner
Lawrence@collisonclinicokc.com
405/ 848-7035

808 NW 63rd Street • Oklahoma City, OK 73116
P.O. Box 54405 • Oklahoma City, OK 73154-1405
405/848-7035 • Fax: 405/ 842-3929

Oklahoma Route 66 Business Spotlight

Oklahoma Route 66 Museum

Renovated R66 Museum Plans Grand Opening Ceremony

The Oklahoma Route 66 Museum in Clinton, OK is closed. But if you were to come by you would find construction workers putting finishing touches on exhibits as they prepare for the much anticipated reopening scheduled this month. Pat Smith, Director, her staff and volunteers were indeed busy getting ready for the big event.



Pat Smith, Director

Pat shared that after 17 years, the Oklahoma Route 66 Museum has undergone a full renovation of its 8 exhibit galleries—bringing the facility into the 21st Century. The grand opening ceremony will be held on Saturday, May 26, 2012, at 2:00 pm, during Clinton's 2012 Route 66 Festival. Activities are scheduled throughout the day—including special Route 66 guests, music, free museum admission and refreshments!

Following the designation of Route 66 as a state scenic byway in 2007, the museum was awarded \$120,000 in federal grant money from the National Scenic Byways Program and the Department of Transportation. The Friends of the Oklahoma Route 66 Museum, INC. and the Oklahoma Historical Society (OHS) collaborated and raised the remainder of funds needed to complete the project.

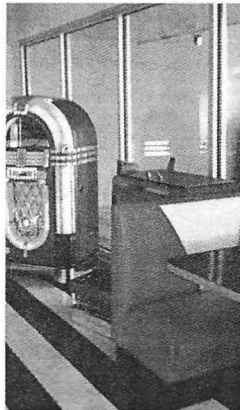
The exhibits in the Route 66 Museum have not been updated since being built in 1995; and, they were beginning to show signs of wear. Not wanting to change the thematic approach, the museum will continue to tell the story of Route 66 by decade; but, through modern technology, patrons will have the opportunity to interact with the exhibits. For example, pre-recorded conversations and the more common sounds of a diner will

be overheard as patrons sit in the booths located in museums

Diner exhibit. Kiosks will be strategically placed loaded with games, video excerpts, and other interactive activities-

for patrons of all ages. An embedded children's tour will be a welcome addition, as caricatures of popular models of classic cars will guide them through the exhibits. The changes will create a more personal, hands-on Route 66 experience.

The Grand Opening ceremony will be held on May 26, 2012, as stated earlier. Throughout the day of the Grand Opening ceremony, people can tour the museum at no charge!



Route 66 author Jim Ross, Route 66 photographer, Shellee Graham, and Route 66 author/artist, Jerry McClanahan will host a book signing of their new collaborative work, *Route 66; Sightings*. Prior to (and continued after the conclusion of) the ceremony, local musician, Jared Deck, will perform the rock'n roll hits heard during the heyday of Route 66. The actual ceremony, emceed by Jim Ross, will begin at 2pm, which will not interfere with Clinton's Route 66 Festival. Be-



Cindy Smith, Greta Funk, and Donna Lee

sides the ribbon-cutting ceremony, the Oklahoma Route 66 Association will induct two more members into the Route 66 Hall of Fame. Following the ceremony, refreshments will be served to everyone!

Route 66 lovers will make the pilgrimage come May 25. They might not be wearing poodle skirts and bobby socks but the atmosphere is sure to be charged with hip hop fun for everyone. Be there or be square.

Bird Creek Bridge Update

The project began in April 2011, and is nearing completion. The new bridge is in place and open to traffic.

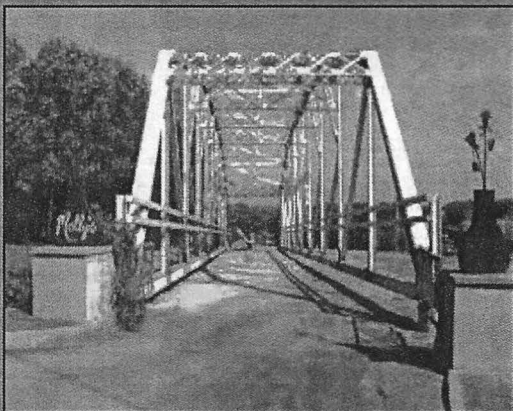
In a way to provide a unique opportunity to preserve a span originally slated for demolition, Molly's Landing property owner, which is adjacent to the two bridge location, was given a portion of the trusses being removed.

The truss has been installed at the front entrance to the property.

Recently, the City of Catoosa has expressed an interest in long range facilities development plans inside the park that may include the Bird Creek trusses, or other historic trusses. The trusses are presently in storage.

Photographic and video documentation of the project is under way. The reproductions of the original plans have been obtained. At this time no photographs of the bridge prior to the construction of the 1956 bridge have been located.

Interpretive kiosk or panel development not yet started. Project completion is slated for 2015.



The Entrance to Molly's Landing is now adorned with the 220-foot truss and 106-foot pony truss from the 1936 Bird Creek Bridge.



El Reno 24th Annual Burger Day

Union Pacific Railroad, in celebration of the Railroad's 150th Anniversary and the special train's arrival, officially began the company's 150th Anniversary Celebration festivities at the El Reno Burger Day Festival.

This was the 24th year for El Reno Burger Day Festival and there was fun to be had by all. The Classic car show



had a wonderful showing, and the children's stage brought back an old favorite by having a hulu hoop competition.

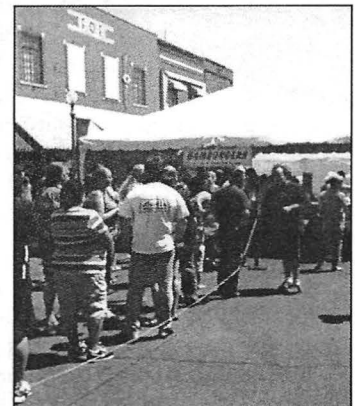
The festival goers browsed the street lined craft booths and vendors as they listened to great music from the Main Stage which started with



the Sour Milk Babies, Jeremy Fields then hit the stage with his guitar followed by the Misfits. O Fidelis filled the air with sweet folk music and then we were rocking with Deerpeople. In the afternoon Jenny Simms Band beat out a little country and finally, Johnny Cooper added finishing touches to a great day!

And let's not forget the GIANT FRIED ONION HAMBURGER cooked live before your very eyes! Yum!

Don't miss the fabulous railroad-



themed mural, painted by local artist Chris Small. The mural is painted on the historic Route 66 underpass as it crosses under UP's track, near the museum.

Comfortable Rooms at Budget Rates

Western Motel
315 N. E. Hwy 66
Sayre, OK 73662
Tel: (580) 928-3353
Fax: (580) 928-9343

"Trust in the Lord with all your heart"

Priti
Owner

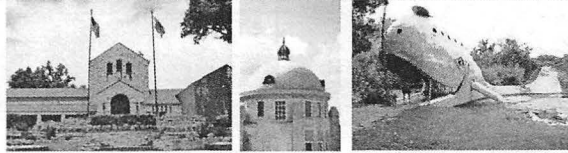
I-40 Exit 25
on Route 66

**Fat
Charlie's
Grill**

Charlie Collinson
Owner

915 512-8270 Fax 512-8271
1004 E. Dewey Sapulpa Ok. 74086

EASTERN OKLAHOMA



Oklahoma Route 66 Business Directory

AFTON
Town of Afton
PO Box 250
Afton, OK 74331
Afton Station &
Route 66 Packards
12 SE First St
Afton, OK 74331
918-257-4044

Bristow
Coleman's Rib Joint
223 S Main
Bristow, OK 74010
918-367-5656
Granny's Emporium
709A S Roland
Hwy 66 West
Bristow, OK 74010
918-367-1727
Hummel Hideaway Homes
424 S Rowland
Bristow, OK 74010
918-519-3510
KREK
116 West 12th Avenue
Bristow, OK 74010
918-367-5501

CATOOSA
Catoosa Chamber
PO Box 297
650 S Cherokee Suite C
Catoosa, OK 74015
918-266-6042
Catoosa Historical Society
207 N Cherokee
PO Box 738
Catoosa, OK 74015
918-266-6592
DW Correll Museum
19934 E Pine
Catoosa, OK 74015
918-226-3612
Hampton Inn & Suites
100 McNabb Field Road
Catoosa, OK 74015
918-739-3939
Skelly Lodge
27795 S Skelly road
Catoosa, OK 74015
918-266-3331
The Blue Whale
PO Box 1300
Catoosa, OK 74015
918-694-7390

CHANDLER
Boom-A-Rang Diner
912 Manvel Avenue
Chandler, OK 74834

Chandler Chamber
400 E Route 66
Chandler, OK 74834
405-258-0673
Community Thrift Shop
of Chandler
921 Manvel Ave
Chandler, OK 74834
405-258-8258
Janetta's Pizza & Coney's
920 1/2 W 15th
Chandler, OK 74834
405-258-9945
LD's Automotive
PO Box 486
Chandler, OK 74834
405-258-2120
Lincoln County
Historical Society
719 Manvel
Chandler, OK 74834
405-258-2425
Lincoln Motel
740 E 1st Street
Chandler, OK 74834
405-258-0200
McJerry' Route 66 Gallery
310 Manvel Ave
Chandler, OK 74834
903-467-6384
Oak Glen RV Park
347203 E Highway 66
Chandler, OK 74834
405-258-2994
Randy Bowen Chevrolet
1201 Manvel Ave
Chandler, OK 74834
405-258-0055
Route 66 Interpretive
Center
400 E Route 66
Chandler, OK 74834
405-258-1300
VFW Post 1719
900726 S 3420 Rd
Chandler, OK 74834
405-258-3050

CHELSEA
Chelsea Motor Inn
321 E Layton
Chelsea, OK 74016
918-789-3437
918-789-2001
Main Street Diner
251 W Sixth
Chelsea, OK 74016
918-789-2001
Oak Hills Winery
7070 S 4240 Rd
Chelsea, OK 74016
918-789-WINE (9463)

Southern Belle Flea Market
426Walnut
Chelsea, OK 74016
918-789-5212

CLAREMORE
Boom-a-rang Diner
302 W Will Rogers Blvd.
Claremore, OK 74017
918-342-0601
Claremore CVB
419 W Will Rogers Blvd
Claremore, OK 74017
918-341-8688
JM Davis Gun Museum
333 N Lynn Riggs Blvd
Claremore, OK 74018
918-341-5707
Rogers County
Historic Society
121 N Chickasaw
Claremore, OK 74018
918-342-1127
Route 66 Sports Bar
940 S Lynn riggs Blvd.
Claremore, OK 74017
918-342-4033
Shepherd's Cross
16752 E 450 Road
Claremore, OK 74017
918-231-6947
The Nut House, LLC
2667 S Highway 66
Claremore, OK 74109
918-2661604
Will Rogers Memorial
1720 W Will Rogers Blvd
Claremore, OK 74017
918-343-8118
Will Rogers Motor Inn
940 South Highway 66
Claremore, OK 74017
918-341-4410

COMMERCE
Allen's Fillin Station
101 S Main
Commerce, OK 74363
918-533-1151
City of Commerce
300 Commerce Street
Commerce, OK 74339
918-675-4373

DAVENPORT
Central Cellular
PO Box 789
Davenport, OK 74026
918-377-2262
Central OK Telephone CO
PO Box 789
Davenport, OK 74026
800-252-8854

Dan's Bar-B-Que
PO Box 561
Davenport, OK 74026
918-377-2288
Davenport Chamber
PO Box 66
Davenport, OK 74026
800-252-8854
Early Bird Cafe
615 Highway 66
Davenport, OK 74026
918-377-2209
Garwooly's
1023 N Broadway
Davenport, OK 74026
918-377-2230
Marketplace Insurance
203 Broadway
Davenport, OK 74026
918-377-2355

MIAMI
Chapters
31 N Main St
Miami, OK 74354
918-540-0468
Coleman Theatre
103 N Main St
Miami, OK 74354
918-540-2425
Miami CVB
101 N Main St
Miami, OK 74354
918-542-4435
Pizza Hut Express &
Pizza Hut of Miami
PO Box 1247
Miami, OK 74354
918-540-2471
918-542-6642

Route 66 Vintage Iron
130 S Main
Miami, OK 74354
918-542-6170

Waylan's Ku-Ku Burger
915 N Main St
Miami, OK
918-542-1696

SAPULPA
American Heritage Bank
2 S Main Street
PO Box 1408
Sapulpa, OK 74066
918-227-8228
Boom-a-rang Diner
126 E Dewey
Sapulpa, OK 74066
918-224-6200

Support the Business-
es along Route 66

We at the Oklahoma Route 66 Association would like to take a minute and say a big Thank You to all the businesses that buy and renew their memberships every year. And we salute those of you that volunteer your time when someone else along the road needs your support.

If you are reading this newsletter for the first time or are a long time supporter please take a minute and read our supporting business list. If you are traveling to one of these great locations in the near future stop in and say hello as a fellow Mother Road supporter! You will be glad you did.

Not a member yet? We would love to have you join our organization or maybe you know someone else that might be interested. We have provided a membership application for your convenience. Fill it out and send it in. We look forward to hearing from you.

AMSOIL
The First in Synthetics®
SINCE 1972

DOUG TOWNSLEY
AMSOIL DEALER

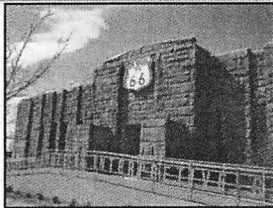
CDT Synthetics
1804 Mulberry Lane
El Reno, OK 73036
(405) 831-4741
E-mail: cdtynthetics@cox.net
Web: lubedealer.com/cdtynthetics

Jrs Grill
Jeff and Pam
Owners

405-208-2735
305 E Hwy. 66
Wetstone, OK 74081

Homestyle Cooking
in A Homestyle Atmosphere

Bikers Welcome!



EASTERN OKLAHOMA

SAPULPA (Con't)

Brews & Bytes Coffee House
18 S Water Street
Sapulpa, OK 74066
918-732-9837

Clark Oil Distributors Inc
801 W Dewey
Sapulpa, OK 74066
918-224-3070

Copper Oaks B&B
7806 Hwy 97
Sapulpa, OK 74066
918-224-3986

Dewey Street Market
209 E Dewey
Sapulpa, OK 74066
918-227-4508

Fat Charlie Grill
1004 E Dewey
Sapulpa, OK 74066
918-512-8270

First United Bank & Trust Co.
PO Box 1290
Sapulpa, OK 74067
918-224-5151

Freddie's BBQ & Steakhouse
1425 New Sapulpa Rd
PO Box 904
Sapulpa, OK 74067
918-224-4301

Happy Burger
215 N Mission
Sapulpa, OK 74066
918-224-7830

Hickory House BBQ
262 N Mission
Sapulpa, OK 74066
918-224-7830

R&T Express Grocery
100 W Dewey
Sapulpa, OK 74066
918-227-2021

Route 66 Frame Shoppe
110 E Dewey
Sapulpa, OK 74066
918-224-1767

Sapulpa Chamber
101 E Dewey
Sapulpa, OK 74066
918-224-0170

Sapulpa Community Theatre

124 S Water
Sapulpa, OK 74066
918-227-2169

Sapulpa Historical Society
100 E Lee Ave PO Box 278
Sapulpa, OK 74066
918-224-4871

Sapulpa Main Street
101 E Dewey
Sapulpa, OK 74066
918-224-5709

Sapulpa Super 8 Motel
1505 New Sapulpa Road
Sapulpa, OK 74066
918-227-3300

Sapulpa Trolley & Rail
701 E Dewey
Sapulpa, OK 74066
918-224-1515

Tulsa-Sapulpa Union Railway
701 E Dewey
Sapulpa, OK 74066
918-224-1515

Turnpike Wrecker
11902 S 161st West Ave
Sapulpa, OK 74066
918-232-4524

STROUD

Clovis Insurance Agency
PO Box 270
Stroud, OK 74079
918-968-2552

P & G Originals
3752 E Highway 66
Stroud, OK 74069

Rock Cafe
114 W. Main
Stroud, OK 74079
918-968-3990

Shoe Tree Trading Post
3750 E Hwy 6 74834
405-258-9141

Sisters Consignments, ETC
307 W Main
Stroud, OK 74079
918-987-1747

Stable Ridge Winery & Vineyards

2016 Hwy 66 West
Stroud, OK 74079
918-968-2568

Stroud Chamber of Commerce

216 W Main Street
Stroud, OK 74079
918-968-3321

Territory Cellars
1521 N Hwy 99 Suite 1
Stroud, OK 74079
918-968-2575

TULSA

Apertures Photo
1936 S Harvard Ave.
Tulsa, OK 74112
918-742-0500

Desert Hills Motel
5220 E 11th St
Tulsa, OK 74112
918-834-3311

Lyon's Indian Store
111 S Detroit
Tulsa, OK 74120
918-582-6372.

Ollie's Station Restaurant

4070 Southwest Blvd
Tulsa, OK 74107
918-446-0524

Paintmaster Collision

5950 E 11th St
Tulsa, OK 74112
918-836-8668

Pyeatts Synthetics

16701 E Newton Place
Tulsa, OK 74116
918-234-3543

Redfork Crossing

Business Services
3704 Southwest Blvd
Tulsa, OK 74107
918-583-2333

Red Fork Main Street

PO Box 570978
Tulsa, OK 74157
918-445-4457

Rose Bowl Event Center

7419 E 11th St
Tulsa, OK 74112
918-298-0048

Route 66 Village

3770 SW Blvd.
PO Box 57166
Tulsa, OK 74157
918-446-4650

Sandusky Ave Christian Church

1101 S Sandusky Ave
Tulsa, OK 74112-5219
918-834-4427

Tulsa Regional Early Ford V8 Club

of America
PO Box 4109
Tulsa, OK 74159

contact: Sarah McCormick

Vista Tulsa

2 W 2nd Street
Suite 150
Tulsa, OK 74103

918-560-0229

VINITA

Cowgirlz Spa

128 S Jones Street
Vinita, OK 74301
360-789-5560

Golden Spike Restaurant

414 E Illinois
Vinita, OK 74301
918-256-7656

Holiday Inn Express

232 S 7th
Vinita, OK 74301
918-256-4900

Little Tin Barn

433055 E Hwy 66
Vinita, OK 74301
918-256-5415

Park Hill Motel & RV Park

438415 E Hwy 60
Vinita, OK 74301
918-256-5511

Summerside Vineyards

Winery & Meadery

441251 E Historic Rte 66

Vinita, OK 74301
918-256-3000

Vinita Area Chamber

125 S Scraper
Vinita, OK 74301
918-256-7133

WARWICK

Seaba Station & Motorcycle Museum
336992 E Highway 66

WELLSTON

Dream Big T-shirts
333684 East Route 66
PO Box 112
Wellston, OK 74881
405-258-5050

contact: Denise Swafford

JR's Grill

306 E Highway 66
Wellston, OK 74881

ELSEWHERE

Vic's Old Gas Pump, Inc
1943 4th Ave S

Seattle, WA 98134

888-918-7867

Cozy Dog Drive Inn

2935 S 6th St

Springfield, IL 62703

Route 66 Sodas, LLC

Route 66 Root Beer

Post Office Box 766

Lebanon, MO 65536-0766

417-588-4466

877-667-6327 (toll free)

Image Everywhere LLC

1423 E Concord Pl

Broken Arrow, OK 74012

University of Utah

Mariott Library

295 South 1500 East

Salt Lake City, UT 84112

801-581-7744

www.CowgirlzSpa.com

COWGIRLZ SPA

Wendy A. Sullivan
Licensed Massage Practitioner

128 South Jones Street
Vinita / White Oak, OK 74301

(360) 789-5560

"Where Cowgirls & City Girls Alike Come To Let Their Ponytails Down....."
(Cowboys R' Welcome Too!)



Shelton Voorhees
Law Group

Mike Voorhees
Attorney at Law

v: 405.682.5800
w: 405.605.8800
f: 405.601.0677
mv@lawofficeok.com

7701 S. Western Ave., Suite 201
Oklahoma City, Oklahoma 73139
www.lawofficeok.com

Coffee Creek Tree Farm
Choose & Cut Christmas Trees

Charles Bullock

13899 E Coffee Creek Rd.
3/4 mile E. of Hiwassee Rd.
Arcadia, OK 73007

(405) 396-2282 / (405) 201-3555

coffee creek trees 2010@gmail.com



EL RENO SMALL TOWN WEEKEND

JUNE 1, 2012



Get your motor running for this...

23RD ANNUAL ROUTE 66



Blowout
Hot Rods • Trucks
Sapulpa, OK
JUNE 2, 2012

Classic Cars • Hot Rods • Motorcycles • Trucks



June 15-16, 2012



June 15, 2012

WESTERN OKLAHOMA



Oklahoma Route 66 Business Directory

ARCADIA

Arcadia Historical & Preservation Society
Box 134

Arcadia, OK 73007
405-396-2398

Arcadia Tag & Tittle
PO Box 253

Arcadia, OK 73007
405-396-0824

Coffee Creek Tree Farm
13899 NE 220

Arcadia, OK 73007
405-201355

Pops

660 W Highway66
Arcadia, OK 73007

405-928-7677

BETHANY

Apple Tree Antique Gallery
6740 NW 39th Expressway

Bethany, OK 73008
405-495-0602

Bethany Antique Mall
3909 N College Ave

Bethany, OK 73008
405-495-7091

Boom-a-Rang Diner
3929 W. College Avenue

Bethany, OK 73008
405-495-9100

City of Bethany

6700 NW 36th St
Bethany, OK 73008

405-789-5005

DTWN Bethany Merchants Association

3909 N College
Bethany, OK 73008

405-495-7091

Holiday Inn Express
7840 NW 39th Expressway

Bethany, OK 73008
405-787-6262

Native America Gallery and Gifts

3823 N College
Bethany, OK 73008

405-789-4300

Sparkles

6716 NW 39th Expressway
Bethany, OK 73008

405-787-3933

CALUMET

Bethany Kars
24825 W Hwy 66

Calumet, OK 73014
405-615-3188

Cherokee Trading Post

301 S Walbaum Road
Calumet, OK 73014

405-884-2502

CLINTON

Clinton Chamber

101 S 4th St
Clinton, OK 73601

580-323-2222

Oklahoma Route 66 Museum

2229 W Gary Blvd
Clinton, OK 73601

580-323-7866

ELK CITY

Elk Creek Tables & Gallery

511 W Third Street
Elk City, OK 73644

580-919-0353

National Route 66 Museum

2717 W 3rd
Elk City, OK 73648

580-225-6266

KOA Kampgrounds

1-40 Exit 50
Elk City, OK 73644

580-592-4409

EDMOND

Anderson Productions

PO Box 3461
Edmond, OK 73083

405-341-1646

Arcadian Inn Bed & Breakfast

328 East First
Edmond, OK 73034

405-348-6347

Edmond CVB

PO Box 2970
Edmond, OK 73083

405-216-7781

Edmond Historical Society

431 S Blvd
Edmond, OK 73034

405-340-0078

Fairfield Inn and Suites

301 Meline Drive
Edmond, OK 73034

405-341-4818

Pin EFX, LLC

3801 Pawnee Circle
Edmond, OK 73013

405-623-9125

Elk City

Elk City Chamber of Commerce

PO Box 972
Elk City, OK 73648

580-225-0207

National Route 66 Museum

2717 W Third
Elk City, OK 73648

580-225-3542

EL RENO

Bill & Clara's Home and Ranch

2701 W 10th
El Reno, OK 73036

405-262-6651

CDT Synthetics
1804 Mulberry Lane

El Reno, OK 73036
405-831-8741

El Reno Chamber

206 N Bickford
El Reno, OK 73036

405-262-1188

El Reno CVB

110 S Bickford
El Reno, OK 73036

405-262-8687

Fort Reno Visitors Center

7107 W Cheyenne St
El Reno, OK 73036

405-262-3987

Johnnie's Grill

301 S Rock Island
El Reno, OK 73036

405-262-4721

Larry Nance Photography

113 S Bickford
El Reno, OK 73036

405-262-3975

Shamrock/66 Automotive

1201 S Rock Island
El Reno, OK 73036

405-262-7444

ERICK

C&K Quick Stop

306 W Roger Miller Blvd
Erick, OK 73645

580-526-3566

Erick Chamber of Commerce

118 W Roger Miller Blvd
Erick, OK 73645

Oleta's Gift Shop

801 S Elm
Erick, OK 73645

580-526-3009

Roger Miller Museum

101 E Roger Miller Blvd
PO Box 464

Erick, OK 73645

580-526-3833

LUTHER

The Boundary on 66

16001 E Hwy 66
Luther, OK 73054

OKLAHOMA CITY



Membership Application

To join the Association or renew an existing membership, please fill out this form, include your check or money order (in US funds, on a US-based bank), and mail to the address below. We also accept MasterCard and Visa for your convenience. NOTE: A \$20 recovery fee will be charged for bad checks.

Type of annual membership (check one)

- Individual \$20/year
 Family \$30/year
 Kids' Club \$10/year
 * Overseas \$30/year
 * Business \$49/year
- Higher fee pays for shipping on newsletters

Benefactor

- Bronze \$200/year Silver \$300/year Gold \$500/year Platinum \$1000/year Titanium \$2000/year

Name _____

Business name _____

Child's name for Kids' Club _____

Address _____

Home phone _____

Business phone _____

Fax _____

Email _____

Credit card type, # and expiration _____

Signature _____

Signature is necessary for credit card payment.



Oklahoma Route 66 Association

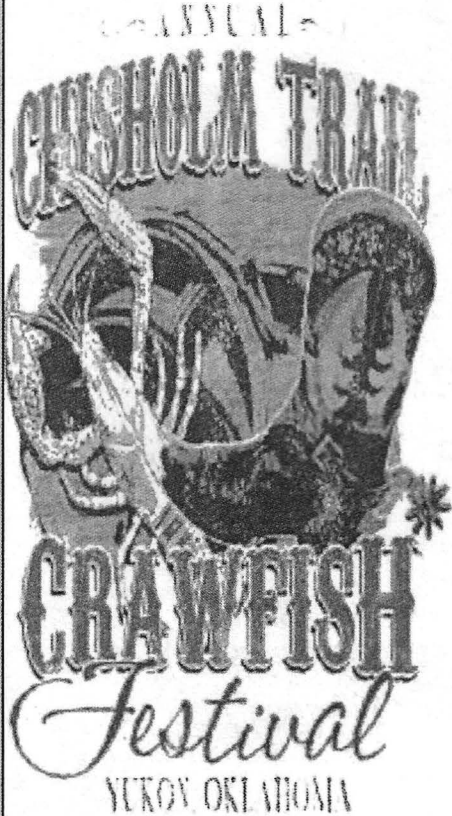
PO Box 446

Chandler, OK 74834

405-258-0008

www.oklahomaroute66.com

2012 Chisholm Trail Crawfish
June 2, 2012
Saturday: 10:00 am - 6:00 pm



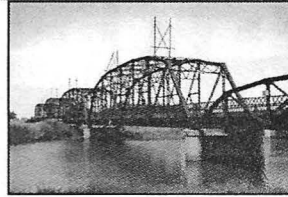
Our ads mean business!



Newsletter advertising costs per Issue ...

Members	Non-members
Business card: \$7.50	Business card: \$15
¼ page: \$15	¼ page: \$30
½ page: \$20	½ page: \$40
Full Page: \$30	Full page: \$60

Business members get one free business card ad upon joining, so if you are a business member and have not yet submitted a card, Please be sure and send us one!



WESTERN OKLAHOMA

Oklahoma Route 66 Business Directory

OKLAHOMA CITY

Collision Clinic
PO Box 54405
Oklahoma City, OK 731854
405-848-7035

Glass Boy Studios
6900 Green Meadow Lane
Oklahoma City, OK 73132
405-626-3001

Lincoln Inn Express
5405 N Lincoln Blvd
Oklahoma City, OK 73105
405-528-1341

Vee Twin Performance
400 SW 33rd
OKC, OK 73108
405-631-1831

Vorhees & Vorhees PC
7701 S Western Ave Suite 201
Oklahoma City, OK 73139
405-682-5800

SAYRE

Sayre Chamber
PO Box 474
Sayre, OK 73662
580-928-3386

Sayre Main Street
PO Box 364
Sayre, OK 73662
580-928-2514

Stardust Restaurant
611 NE Highway 66
Sayre, OK 73662
580-928-2277

The Old Shoppe
103-105 W Main Street
Sayre, OK 73662

The Brick Coffe House
109 E Main Street
Sayre, OK 73662
580-928-8949

Western Motel
315 NE Hwy 66
Sayre, OK 73662
580-928-3353

TEXOLA

YUKON

Yukon Chamber of Commerce
510 Elm
Yukon, OK 73099
405-354-3567

WARR ACRES

WEATHERFORD

Best Western Mark Motel
525 E Main
Weatherford, OK 73096
580-772-3325

Comfort Inn & Suites

1311 E Main
Weatherford, OK 73096
580-772-9100

Doc's Longhorn Trading Post
1511 E Main
Weatherford, OK 73096
580-772-2277

Downtown Diner
123 W Main
Weatherford, OK 73096
580-744-1234

Fairfield Inn & Suites by Marriott
201 N Nevada
Weatherford, OK 73096
580-774-0800

Heartland Museum
1600 S Frontage Rd
Weatherford, OK 73096
580-774-2212

Rick Koch Oil Company
PO Box 685
Weatherford, OK 73096
580-772-6076

Route 66 Thunderbirds
2121 E Main
Weatherford, OK 73096
580-772-6666

Stafford Air & Space Museum

3000 Logan Road
Weatherford, OK 73096
580-772-5871

Weatherford Chamber
522 W Rainey Room 224
Weatherford, OK 74096
580-772-7744



SISTER ASSOCIATIONS

Route 66 Association of Illinois
110 W Howard St
Pontiac, IL 61764

Route 66 Association of Missouri
PO Box 8117
St Louis, MO 63156
furyon66@earthlink.net

Route 66 Association of Kansas
PO Box 66
Riverton, KS 66770
620-848-3330
route66@kans.com

Kansas Historic Route 66
PO Box 66
Baxter Springs, KS 66713
620-856-2066
heritagectr@embarqmail.com

Old Route 66 Assn of Texas
PO Box 66

McLean, TX 79057

806-779-2225

New Mexico Route 66 Assn
1415 Central Ave NE
Albuquerque, NM 87106
info@r166nm.org

Historic Route 66 Assn of Arizona
PO Box 66
Kingman, AZ 86402

California Historic Route 66 Assn
PO Box 64
Azusa, CA 91702-0064
www.route66CA.org

CA-HistoricR166@aol.com
info@r166nm.org

Historic Route 66 Assn of Arizona
PO Box 66
Kingman, AZ 86402

California Historic Route 66 Assn
PO Box 64
Azusa, CA 91702-0064
www.route66CA.org

CA-HistoricR166@aol.com
Dutch Route 66 Association
http://www.rte66.nl
info@rte66.nl
+31-6-4402-8346

Route 66 Association Italy

Via Milano 1
Parma, Italy 43100
(39) 339-571-2414
route66@tin.it

Canadian Route 66 Association

PO Box 81123
Burnaby, BC V5H4K2
Canada
604-434-1818
Route66kicks@mac.com

National Historic Route 66 Federation

P O Box 1848
Lake Arrowhead, CA 92352-1848
Phone: 909-336-6131
Fax: 909-336-1039
Website: www.national66.org
E-Mail: national66@national66.org



OK Route 66 Association

PO Box 446
Chandler, OK 74834
405-258-0008
www.oklahomaroute66.com

BULK RATE
US POSTAGE PAID
CHANDLER, OK
74834-3851
PERMIT #66



On The Road Issue 01 April 2012

Upcoming Events

- May 25-26 Clinton Route 66 Festival
- May 25 Grand RE-Opening of the Oklahoma Route 66 Museum, Clinton, OK
- May 26 Bethany Route 66 Festival, Bethany, OK
- May 31-June 3 Route 66 Days, Elk City, OK
- June 1 El Reno Small Town Weekend, El Reno, OK
- June 2 Route 66 Blowout, Sapulpa, OK
- June 2 Chisholm Trail Crawfish Festival, Yukon, OK
- June 9 Route 66 Wine and Food Festival, Stroud, OK
- June 9 Ice Cream Festival, Chandler, OK
- June 15 Heartland Car Show, Weatherford, OK
- June 15-16 Hog Wild BBQ & Chrome Fest, Chandler, OK
- June 28-July 4 Liberty Fest, Edmond, OK

*Mark Your
Calendars!*

*Southern Belle
Flea Market*
Diana Kohler, Owner

TUESDAY THRU SATURDAY
9 A.M.
CLOSED MONDAY

426 WALNUT
ROUTE 66 & 5TH STREET
CHELSEA, OKLAHOMA
918-789-5212

This Newsletter is printed by: **Kinkos** 101 E Second Street, Edmond, OK