



The Official  
Newsletter  
of the  
Oklahoma  
Route 66  
Association

# On the Road

## 2012 Board

President: Mike Hickey

405-413-0266 (cell)

Eastern VP &

Tulsa District Rep: Brad Nickson

918-231-9539 (cell)

Western VP: Vacant

Secretary &

OK District Rep: Deborah Blair

405-623-9125 (cell)

Treasurer: Vacant

Canadian/Caddo/Blaine

District Rep: Larry Nance

405-262-3975 (work)

Creek District Rep: Frank Gierhart

918-638-6212 (cell)

Custer/Washita/Beckham

District Rep: Vacant

Lincoln District Rep: Ron Burden

918-377-2355 (work)

Ottawa: District Rep: Laurel Kane

918-257-4044 (work)

Rogers/Delaware/Craig

District Rep: Blaine Davis

918-694-7390 (cell)

At-Large Representatives

Jeanne Miller

918-399-9476 (cell)

Emily Priddy

918-408-3665 (cell)

Executive Director

Marilyn Emde

405-258-0008



## this issue

Environmental Excellence P.3

OK Rt. 66 Photo Exhibit P.4

Rusted Rt. 66 Photo Exhibit P.5

Business Spotlight P.8

2012 Preservation Winners P.9

## Weatherford Revitalization Master Plan Under

In 2010, the City of Weatherford voted to continue an existing penny sales tax in order to move forward with the Revitalization portion of the Yes! Weatherford project.

It is now 2012 and Mayor Mike Brown says that the revitalization Phase is underway. Weatherford has raised 2.5 million dollars that will be used for the Weatherford Master Plan construction that has a targeted completion date of November 2013.

While meeting with Mayor Brown he introduced me to Jamie Forrest who will head up the Tourism Office of Weatherford.

Jamie is a graduate of Southwestern Oklahoma State University. She graduated with a degree in Sales and Marketing and started as the newly formed Tourism Director in Feb. 2012.



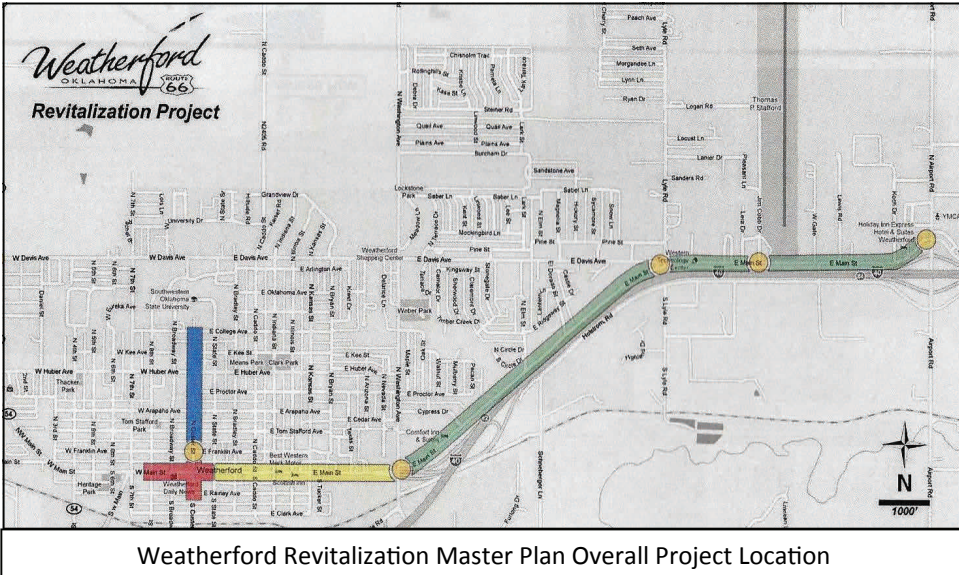
Jamie Forrest, Weatherford Tourism Director and Mayor Mike Brown of Weatherford.

As Weatherford began the conceptual work on the plans for the Revitalization portion of the master plan, one of the goals was to create a



**Chandler, OK**

[www.oklahomaroute66.com](http://www.oklahomaroute66.com)



Weatherford Revitalization Master Plan Overall Project Location

ter from E. Rainey to College Ave. at the Southwestern Oklahoma State University campus.

The Revitalization Plan will provide gateways to existing attractions that include the Tom Stafford Museum, Lucille's Roadhouse, Weatherford Wind Energy Center, Heartland Heritage Museum, War Memorial, University and parks.

I asked Jamie what

new "front door" for tourist and business recruitment. Mayor Brown pointed out that it was decided to incorporate the ever popular Route 66 branding into the theme of the project.

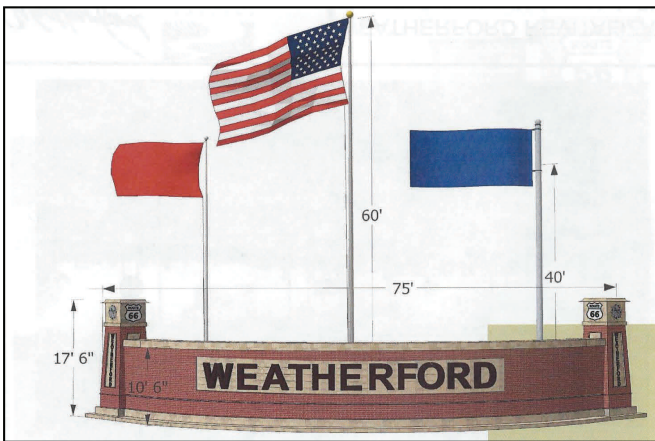
It is a known fact that the Route 66 Shield is one of the most recognizable symbols in the USA and that the Mother Road attracts thousands of visitors each

west and still serves as a large section of the Weatherford Main Street. The Old Route 66 will shine like a rock star with new lighting and sidewalks throughout the Corridor.

The "Custer Street Corridor" will provide a tangible link between the SWOSU campus and Weatherford Main Street/Route 66.



This directional sign is located on Airport Road next to Lucille's.



In order to capture the attention of travelers along Interstate 40, it was necessary to design the welcome monument to a scale proportional to the Interstate 40 overpass.

The Weatherford Revitalization Master Plan improvements will include the addition of red brick intersections, decorative street lights, crosswalks, trees and planting beds, archways, welcome signs, directional signage and kiosks; all of which will carry the Route

was 1st up for the Tourism Office while waiting for the completion of the Revitalization Master Plan. She said, "I am working with the merchants along old Route 66 as well as our museums to customize marketing strategies to make Weatherford a more desirable destination."

Weatherford is putting out the welcome mat so make plans to stop by this next year and take a look first hand at the great things they have done.

year.

Route 66 serves as the service road along I-40 as you come into Weatherford heading

66 Shield.

The streets slated for revitalization are Main Street/Route 66 from 8th to Airport Road and Cus-





**2012 Annual  
Environmental  
Excellence  
Celebration  
Nov 1, 2012**

Keep Oklahoma Beautiful is pleased to announce this year's Board Commendation Award Winners and Finalists for the Environmental Excellence Competition. Finalists will be honored and winners announced during the 22nd Annual Environmental Excellence Celebration on November 1, 2012 at the National Cowboy & Western Heritage Museum in Oklahoma City.

**2012 Board Commendation Award Winners**

**CHAMPION VOLUNTEER**

Jan L. Kunze—OKC

**ENVIRONMENTAL ADVOCATE**

Devon Energy Corporation—OKC

**LIFETIME ACHIEVEMENT**

Pearl Garrison—Sperry

**TOWERING SPIRIT**

The Choctaw Nation of Oklahoma

**VANGUARD**

OGE Energy Corp—OKC

**VISIONARY LEADERSHIP**

Chesapeake Energy Corp—OKC

**2012 Environmental Excellence Competition Finalists**

**Affiliate Champion Award Winners**

Glen Kerns - McAlester

Sandra Cline - Newkirk

**Businesses:**

**Fewer than 150 employees**

**Oklahoma Environmental Management Authority**

Tahlequah Recycling Incorporated

**More than 150 employees**

Saint Francis Health System - Broken Arrow

Collegiate Effort

**Faculty, Staff or Institution Driven**

University of Central Oklahoma

**Government Programs:**

**Municipal/County - Population less than 10,000**

City of Okmulgee

Kay County Conservation District

Town of Morrison & Morrison Tree Board

**Municipal/County - Population between 10,000-30,000**

City of McAlester

City of Miami

Owasso Strong Neighborhood Initiative - Owasso CARES

**Municipal/County - Population greater than 10,000**

City of Enid Tree Board

City of Moore

City of Norman

K-12 Educators & Institutions

St. Mary's Episcopal School -

Edmond

McAlester Public Schools  
Summit Christian Academy -

Broken Arrow

**KOB Youth Award**

**Elementary / Middle School**

Fairview 4-H Club

Washita County 4-H Club

**High School**

Closer to Earth - OKC

OKC Beautiful Teen Board

**Nonprofit Organizations**

**Service area population less than 15,000**

Braman American Legion Post 259

Main Street Pauls Valley &

The Pauls Valley Arts Council

Okmulgee Chamber of Commerce

**Service area population between 15,000-40,000**

Ardmore Beautification Council

Pride In McAlester

**Service area population greater than 40,000**

Keep Broken Arrow Beautiful

Lawton Enhancement Trust Authority

OKC Beautiful

Tulsa Young Professionals

**Team Builders Award Winners**

The Nature Conservancy

The Chickasaw Nation

Inasmuch Foundation

Macklanburg Foundation

Dolese Bros. Co.

Rudy & Deb Hermann



# Route 66 Photo Art Show in Sapulpa until November 1

The Sapulpa Historical Museum Route 66 Photography Show has been on Exhibit since Oct 1, 2012 at the Sapulpa Historical Museum located at 100 E Lee Avenue, Sapulpa, OK. I stopped by the open house on Oct. 18 at 5:30 p.m. and was not disappointed! The exhibit featured photos taken of Historical Route 66 landmarks.

I stopped and talked to Mike Jefferies the Sapulpa Museum Director on the way upstairs to Saunders



Mike Jefferies

Hall where the Photo Art Show is on display. Mike gave me a quick tour of the Museum which came into the possession of the Sapulpa Historical Society in the mid-1980's.

The Sapulpa Museum is a three-story building dedicated to the preservation of Sapulpa's past from Indian Territory days to the present. All displays have been carefully designed to depict the rich heritage of Sapulpa from manufacturing like Frankoma Pottery; the Frisco Railroad,

even the history of the Sapulpa High School. The museum has yearbooks dating back to 1918.

Come to the Route 66 Photo Art Show and you will get a double treat by touring this unique museum as well.

There are 55 colorful photos displayed in the Saunders Room by 17 Students from the Tulsa Community College and their Instructor Natalie Green. Professor Green also opened Apertures Photo in May of 1990.

I'm sure everyone in the class would agree that there is not a more inspiring subject than the sites along the Mother Road.



LaSandra and Brad Nickson, Frank Gierhart

The tour was led by the Eastern VP for the OK Route 66 Association Brad Nickson. The group started at the Catoosa Blue Whale and they ended at Pops.

I talked to two of the students that had photos on display and asked, "What was your favorite subject to photograph along Route 66?"



John Olson

John Olson chose the Sapulpa Train Depot. John's family comes from a long line of

Railroad engineers. The train depot was reminiscent of by-gone days.

Oscar Velasquez settled on a small red house in Bristow. The more photos he has taken, he realized that landscapes are his personal favorites.



Oscar Velasquez

This Photo Show has photographs of famous Route 66 landmarks like the Blue Whale, Round Barn and Pops larger than life soda drink along side the quaint sometimes obscure. All of which have been artisti-



Professor Natalie Green and class taking pictures while on the second photo bus tour from Tulsa to Miami, OK  
Photo By: Brad Nickson

cally captured by these photo artists.

Professor Natalie Green and her class just completed the second photo tour which went from Tulsa to Miami, Oklahoma. This tour included several of the students from the 1st tour: Kathryn Peaster, John Olson, Tracey Martinez and Rachel Shoemaker to name a few. We hope that there will be new photo additions to the Route 66 Photo Art Show as it moves to it's



new location in November. When asked, "Will there be a 3rd Photo Tour?" Professor Green said, "We are hopeful."

"It is really a breathtaking ride and it would be great to

stop anywhere you wanted to take a picture," Green said. "It was sad for all when we had to turn around and drive back to Tulsa. You want to keep going and going and going down Route 66."

All the photos in this Photo Show are for sale. Contact Professor Green at:

Apertures  
1936 S Harvard Ave., Tulsa, OK  
918.742.0500

For Sapulpa Historic Museum information: call 919-224-4871 or go to their webpage: [sapulpahistoricalsociety.com](http://sapulpahistoricalsociety.com)

## COMING SOON 2013-14 TRIP GUIDE

Dear Advertiser,

The Oklahoma Route 66 Association is beginning production of the 2013-14 edition of our Official Oklahoma Route 66 Association Trip Guide.

We are proud to announce that we will print and distribute 50,000 copies of this informative, popular guide again this year.

Distribution locations include the Oklahoma Tourism Information Centers and participating merchants up and down Oklahoma's section of Route 66.

So returning advertisers, sharpen your pencils, review your ads, make changes and return to the Association office NO LATER THAN DECEMBER 3, 2012 to reserve your ad space.

FYI: Your ad should be a PDF or JPEG file at actual size or larger. All black and white photos MUST be a minimum of 200 dpi and be sent as JPEGs.

An order form can be found on Page 8.

Thank you for your consideration and continued support of this important publication and Route 66.

**Park Hills Motel & RV Park**

438415 E. Highway 60  
Vinita, OK 74301  
918-256-5511

Owners  
John Worley  
Nikki Garrett

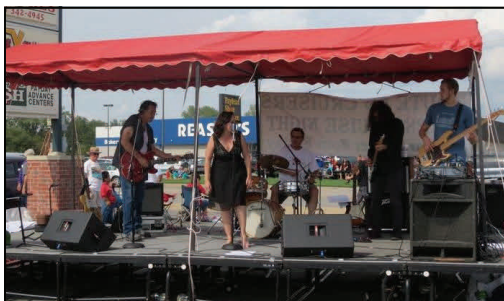


# Route 66 Crusiers Car & Motorcycle Show 2012

The Cruise weekend began with a 12 pm showing of the movie "Deuce of Spades" at the B & B Theater in Claremore, OK on Friday, Sept 28, 2012

Next the Ne-Mar Center was the host of the Cruise-In activities.

Kelli Lynn & The Skillet Lickers were on stage at 3pm to entertain the cruis-



ers. The parking lot was filled with vintage cars. The Claremore Homecoming was also that weekend. So parade goers and car lovers alike were able to enjoy these great cars.



At 6pm the Cruisers head down Route 66 ending at the Foyil, Oklahoma Totem Pole Park. The Akdar Shriners were waiting for them and served up free hamburgers and hot dogs.

Then it was back to Claremore where

the evening activities included a flame-throwing contest with cash prizes for the Best Flames!

Registration tables were setup for the car Show that would commence on Saturday.

Congratulations to the Winners!



Best Overall- Mike Maywell - 1965 Ford F-100



Best Chevy- David Schomber - Camaro Convertible



Best Ford & Best Paint- Mike Willey - Ford 3 Coupe



Best Mopar- David Patterson - 1966 Dodge Coronet



Best Overall Rat Rod- Anthony Marquez - GMC Rat



Claremore Lake Choice- James & Peggy Titus - 55' Chevy



Akdar Shriners Pick- Best Motorcycle- Calvin Sells- Harley

Below:  
Dwayne Caldwell and Richard Hodges.  
Congrats on a great event.



We all know how persuasive students can be.....so, Keep OK Beautiful wants to turn them loose on the fight against litter!

High School and College students will tackle the issue of littering and illegal dumping in Oklahoma by creating a 30-second video clip that shows littering is costly, deplorable, illegal and just downright wrong.

PRIZE—Wining videos will be shown throughout Oklahoma as PSAs and the 1st Place Winner will receive a cash prize of \$750!

DEADLINE—Students must register their entry at [keepoklahomabeautiful.com](http://keepoklahomabeautiful.com) by November 15, 2012 and submit their video by December 31, 2012

LEARN MORE at [keepoklahomabeautiful.com/end-litter](http://keepoklahomabeautiful.com/end-litter) or call 286-9141

GET INSPIRED! Watch last year's winning videos at

[youtube.com/keepokbeautiful](http://youtube.com/keepokbeautiful)

Know of a teacher, advisor, principal or community improvement group that should receive more information? Send their contact info to [sonny@keepoklahomabeautiful.com](mailto:sonny@keepoklahomabeautiful.com)

## Oklahoma Route 66 Business Spotlight

# Weatherford Chamber of Commerce



Terri Trent, Director of the Weatherford, OK Chamber

The Weatherford area Chamber of Commerce is in a new location with a new Executive Director! Terri Trent has been with the Chamber since 2009 and received the nod to Executive Director in 2012. The Chamber office is now located at 210 W Main Street. Terri and her executive assistant Darlene McKellips are there to greet you Monday thru Friday from 9am-12noon and 1pm- 5pm.

The Chamber shares space with Southwestern Oklahoma State University. The University is planning on moving the History Museum currently on the Southwestern Oklahoma State campus to the new location on Main Street. What a bonus! Visit the Weatherford Chamber and browse the exhibits showing the rich heritage of Southwestern State University while picking up information on the

Did you know that Weatherford, OK has the longest uninterrupted Mainstreet on Route 66!

local Route 66 attractions in Weatherford.

The city of Weatherford has many beautifully renovated buildings along Main Street which includes a Route 66 Park. It is well worth a

visit.

The Weatherford Area Chamber of Commerce's Mission is to promote economic and community prosperity. And Terri added, "Our main focus is supporting our Chamber members". The Chamber is very busy each year working on community events like:

Area Livestock and Horse Shows: Tough Enough Ski Run: Oil & Gas golf Tournament; Teacher Appreciation; Heartland Cruise Car show & Poker Run; Weatherford Triathlon/ Great Plains YMCA; 4th of July Celebration in the Park; Okie Dust Devil Aerobatic Competition; Weatherford Wind Fest; Wellness Expo.5K.

And don't miss the upcoming, "Home for the Holidays" with a \$10,000 giveaway, which is held in December.



The Weatherford Chamber also works hand-in-hand with SWOSU and their scheduled events:



- Panorama Series
- Jazz Festival
- College Rodeo

If you are traveling on Route 66 next summer, stop by Weatherford for one of their Outdoor Family Movie nights every other Friday in June, July & August. The admission is Free, even popcorn, pop and water! It is held on Main Street/Old 66 in the Park.





# TRIP GUIDE AD INVOICE & Business Membership Form

**DUE AND PAYABLE UPON RECEIPT. THANK YOU!**

OK Route 66 Association Sales Rep: \_\_\_\_\_

Date: \_\_\_\_\_

Business Name: \_\_\_\_\_

Contact Name: \_\_\_\_\_

Street Address: \_\_\_\_\_

City: \_\_\_\_\_ State: \_\_\_\_\_ Zip: \_\_\_\_\_

Mailing Address: \_\_\_\_\_

City: \_\_\_\_\_ State: \_\_\_\_\_ Zip: \_\_\_\_\_

Telephone: \_\_\_\_\_ Fax: \_\_\_\_\_

E-mail: \_\_\_\_\_

Web address: \_\_\_\_\_

### Ad reservation for Trip Guide – circle size

1 / 16 page (1 3/4" wide x 2 3/8" tall) \$ 40.00	1 / 2 page (7 1/2" wide x 4 7/8" tall) \$240.00
1 / 8 page (3 3/4" wide x 2 3/8" tall) \$ 65.00	1 / 2 page (3 3/4" wide x 9 3/4" tall) \$240.00
1 / 4 page (3 3/4" wide x 4 7/8" tall) \$130.00	Full Page (7 1/2" wide x 9 3/4" tall) \$480.00

Subtotal: \_\_\_\_\_

Do you wish to join or renew your \$49.00 Annual Business Membership? Circle one: New Renew

TOTAL AMOUNT ENCLOSED: \_\_\_\_\_

Remit promptly to:  
Oklahoma Route 66 Association  
P.O. Box 446  
Chandler, OK 74834

Any special instructions for ad?

### Questions?

Call 405-258-0008 or  
e-mail at [okrt66association@sbcglobal.net](mailto:okrt66association@sbcglobal.net)

**NOTE:** All ads should be camera ready – either as a high quality printout, a high resolution photo file such as a jpg, tiff, or pdf at actual size at 300 dpi (web quality at 72 dpi is not acceptable). **DO NOT SUBMIT WORD, PUBLISHER, OR QUARK FILES.** If your ad uses half tone art or photos, please provide the art or photo separately, in case we need to rebuild the ad. Be sure to send your ad **AT ACTUAL SIZE. AN EXTRA FEE OF \$25-\$75 WILL BE CHARGED IF WE MUST CREATE OR REBUILD THE AD.**





# Nut House Fall Festival 2012

The 4th annual Route 66 Pecan and Fun Fest was Saturday, Oct. 20th. It was an absolutely beautiful day and there was a large crowd waiting to join in the fun activities as the doors opened at 10am and there was a steady flow of visitors until close at 6pm.



The fall themes activities included pumpkin painting and Halloween costume contest for the kids. The outside tents and booths included an array of fun food, clothing, jewelry items to mill through as well as wooden furniture, cast iron stoves and lawnmowers!



Annie Schneider, Lynn Tedder and Aileen Garrison from the Tulsa Spinning Guild

The Tulsa Hand Spinning Guild set up spinning wheels out in the open air and sharing the art of spinning wool

with Festival goers.

Pecan Hall was also filled with booths and lined the porch with even more beautiful handmade items, jewelry, even Tupperware. They had it all.

There was a band stand with bleachers set up outside of Pecan Hall. The Festival goes enjoyed the music of Bethany Grace and Gypsy Soul, and the Klondike5 String Band through the day.

Kids could enjoy the Spring Race Car Simulators and kids and adults alike could take a stroll on a friendly camel.



And what Route 66 event would not be complete without an antique car show. They had some beauties!



This was the 2nd year the Rogers County Blue Star Mothers

were as the festival with the "Fill the Truck For the Troops". Folks are requested to bring items for donation to

our men and women in the armed services. The Blue Star Mothers then create and send care packages over seas.



Who Can Be A Blue Star Mother? Any woman who filled the role of birthmother, adoptive mother, Step-mother,

Foster-mother, Grandmother, or Legal Guardian of a service member at any time in that service members' life.

For information, you may go to the National web site:

[www.bluestarmothers.org](http://www.bluestarmothers.org)

Icing on the pecan pie...the wonderful goodies you will find year round at the The Nut House.

They have a new crop of pecans available along with all of your favorites: almonds and cashews, plain, roasted and salted, chocolate covered, and the only thing better than homemade fudge is fudge from the Nut House. The colorful Halloween displays were loaded with sauces, seasonings and jellies that would make great gifts.



So if you missed the festival, you can get next years date by going to their website. And remember the Nut House is open Monday through Saturday from 10am to 6pm. Enjoy!

[www.route66nuthouse.com](http://www.route66nuthouse.com)



Fort Reno Ghost Tour

Nov 17, 2012 El Reno, OK

# OK ROUTE 66 MUSEUM TO HOST OKLAHOMA'S RUSTED ROUTE 66 PHOTOGRAPHY EXHIBIT



During the months of November through March, the Oklahoma Route 66 Museum will be hosting a photography exhibition by Oklahoma photographer Lindy Spencer. The photography exhibition, Oklahoma's Rusted Route 66, is a collection of photographs taken along Oklahoma's stretch of Will Rogers Highway focusing on the beauty and artistic qualities of rust. The exhibition will begin November 2, 2012, and run through March 30, 2013.

Lindy Spencer has been involved in photography long before the days of digital cameras. Her interest of photography developed while in elementary school on family vacations using a small Kodak camera and later a Polaroid. As her love of pictures grew, so did her desire to learn more about

photography. Now living in Jones, Spencer uses a Canon Rebel t3i to capture her art with the subject matter ranging from her extended family to the landscapes and architecture of Oklahoma. Currently, Oklahoma's Route 66, its numerous attractions, and the rust documenting the passage of time acts as her inspiration. The theme of rust exposes the color, texture, and design of oxidation not normally noticed by the average eye.

The special exhibition is an organized effort by the Oklahoma Historical Society, Friends of the Oklahoma Route 66 Museum, Inc., and the Oklahoma Route 66 Museum. It will be available for viewing in the museum's Now & Future Room. Fall and spring hours of operation are: Monday through Saturday, 9 am to 5 pm and Sunday 1 pm to 5 pm. From December through January, the museum will be closed on Sundays and Mondays as well as the first week of January. Admission for visitors touring the galleries is \$5 for adults, \$4 for seniors and \$3 for groups of 10 or more, \$1 for students 6-18 and children under 5 are free. For additional information contact Pat Smith at (580) 323-7866 or e-mail [rt66mus@okhistory.org](mailto:rt66mus@okhistory.org).

A Memo



from Mike...

GREETINGS!

We are looking for you and your friends to join us on Route 66. We need new members to help with the many projects for the coming year. I encourage you and your friends to become actively involved in the associations' programs and projects. A reminder that our annual meeting is coming up on January 27th at noon for a pot luck dinner followed by our meeting at 1 pm. I'll look forward to seeing you all then!

**Date: Jan. 27, 2013**

**Location: Chandler Library  
1021 Manvel Ave.**

**Chandler, OK**

**Time: 12 noon Pot Luck**

**1 pm General Meeting**

Mike Hickey

OK Route 66 Association  
President

**Sherree Martinez**  
General Manager  
Holiday Inn Express & Suites



7840 NW 39th Expressway  
Bethany, OK 73008  
T: 405.787.6262 F: 405.787.6263  
[bethany.hie1@gmail.com](mailto:bethany.hie1@gmail.com)  
[www.HIExpress.com/Bethany-OK](http://www.HIExpress.com/Bethany-OK)



# Route 66 Jingles All the Way In December!



←Dickens on the Boulevard  
Claremore, OK  
Nov 16 to Nov 17, 2012

Christmas Parade→  
Vinita, OK  
Dec 6, 2012



←Christmas in the Park  
Elk City, OK  
Nov 23 to Dec 31, 2012  
Edmond Electric→  
Parade of Lights  
Edmond, OK  
Dec 8, 2012



Fort Reno Christmas Guns→  
El Reno, OK  
Dec 16, 2012  
←Holiday Ice Skating  
Edmond, OK  
Nov 26 to Jan 6, 2013



←  
Clinton Festival of Lights  
Clinton, OK  
Nov 27, 2012  
Stroud Christmas Parade→  
Stroud, OK  
Dec 1, 2012



←Bethlehem Walk  
Tulsa, OK  
Nov 29 to Dec 2, 2012

Christmas in the Park→  
Yukon, OK  
Nov 17 to Dec 31, 2012



# EASTERN OKLAHOMA



## Oklahoma Route 66 Business Directory

### AFTON

#### Grand Country Lakeside RV Park

55015 E 270 Road  
Afton, OK 74331  
918-257-5164

#### Town of Afton

PO Box 250  
Afton, OK 74331

#### Afton Station & Route 66 Packards

12 SE First St  
Afton, OK 74331  
918-257-4044

### Bristow

#### Coleman's Rib Joint

223 S Main  
Bristow, OK 74010  
918-367-5656

#### Granny's Emporium

709A S Roland  
Hwy 66 West  
Bristow, OK 74010  
918-367-1727

#### Hummel Hideaway Homes

424 S Rowland  
Bristow, OK 74010  
918-519-3510

### KREK

116 West 12th Avenue  
Bristow, OK 74010  
918-367-5501

### CATOOSA

#### Catoosa Chamber

PO Box 297  
650 S Cherokee Suite C  
Catoosa, OK 74015  
918-266-6042

#### Catoosa Historical Society

207 N Cherokee  
PO Box 738  
Catoosa, OK 74015  
918-266-6592

#### DW Correll Museum

19934 E Pine  
Catoosa, OK 74015  
918-226-3612

#### Hampton Inn & Suites

100 McNabb Field Road  
Catoosa, OK 74015  
918-739-3939

#### Skelly Lodge

27795 S Skelly road  
Catoosa, OK 74015

918-266-3331

#### The Blue Whale

PO Box 1300  
Catoosa, OK 74015  
918-694-7390

### CHANDLER

#### Boom-A-Rang Diner

912 Manvel Avenue  
Chandler, OK 74834

#### Chandler Chamber

400 E Route 66  
Chandler, OK 74834  
405-258-0673

#### Community Thrift Shop of Chandler

921 Manvel Ave  
Chandler, OK 74834  
405-258-8258

#### Janetta's Pizza & Coneys

920 1/2 W 15th  
Chandler, OK 74834  
405-258-9945

#### LD's Automotive

PO Box 486  
Chandler, OK 74834  
405-258-2120

#### Lincoln County

#### Historical Society

719 Manvel  
Chandler, OK 74834  
405-258-2425

#### Lincoln Motel

740 E 1st Street  
Chandler, OK 74834  
405-258-0200

#### McJerry' Route 66 Gallery

310 Manvel Ave  
Chandler, OK 74834  
903-467-6384

#### Oak Glen RV Park

347203 E Highway 66  
Chandler, OK 74834  
405-258-2994

#### Olde Towne Liquor

920 W 15th Street  
Chandler, OK 74834  
405-258-5907

#### Randy Bowen Chevrolet

1201 Manvel Ave  
Chandler, OK 74834  
405-258-0055

#### Route 66 Interpretive Center

400 E Route 66  
Chandler, OK 74834  
405-258-1300

#### VFW Post 1719

900726 S 3420 Rd  
Chandler, OK 74834  
405-258-3050

### CHELSEA

#### Chelsea Motor Inn

321 E Layton  
Chelsea, OK 74016  
918-789-3437  
918-789-2001

#### Main Street Diner

251 W Sixth  
Chelsea, OK 74016

#### Oak Hills Winery

7070 S 4240 Rd  
Chelsea, OK 74016  
918-789-WINE {9463}

### CLAREMORE

#### Boom-a-rang Diner

302 W Will Rogers Blvd.  
Claremore, OK 74017

#### Claremore CVB

419 W Will Rogers Blvd  
Claremore, OK 74017  
918-341-8688

#### JM Davis Gun Museum

333 N Lynn Riggs Blvd  
Claremore, OK 74018  
918-341-5707

#### Rogers County

#### Historic Society

121 N Chickasaw  
Claremore, OK 74018  
918-342-1127

#### Route 66 Sports Bar

940 S Lynn Riggs Blvd.  
Claremore, OK 74017  
918-342-4033

#### Shepherd's Cross

16752 E 450 Road  
Claremore, OK 74017  
918-231-6947

#### The Nut House, LLC

2667 S Highway 66  
Claremore, OK 74109  
918-2661604

#### Will Rogers Memorial

1720 W Will Rogers Blvd  
Claremore, OK 74017  
918-343-8118

#### Will Rogers Motor Inn

940 South Highway 66  
Claremore, OK 74017

918-341-4410

### COMMERCE

#### Allen's Fillin Station

101 S Main  
Commerce, OK 74363  
918-533-1151

#### City of Commerce

300 Commerce Street  
Commerce, OK 74339  
918-675-4373

### DAVENPORT

#### Central Cellular

PO Box 789  
Davenport, OK 74026  
918-377-2262

#### Central OK Telephone CO

PO Box 789  
Davenport, OK 74026  
800-252-8854

#### Dan's Bar-B-Que

PO Box 561  
Davenport, OK 74026  
918-377-2288

#### Davenport Chamber

PO Box 66  
Davenport, OK 74026  
800-252-8854

#### Early Bird Cafe

615 Highway 66  
Davenport, OK 74026  
918-377-2209

#### Garwooly's

1023 N Broadway  
Davenport, OK 74026  
918-377-2230

#### Marketplace Insurance

203 Broadway  
Davenport, OK 74026  
918-377-2355

### DEPEW

#### McKinzie's Family

#### Restaurant

325 W Main Street  
Depew, OK 74028  
918-324-5433

### MIAMI

#### Chapters

31 N Main St  
Miami, OK 74354  
918-540-0468

#### Coleman Theatre

103 N Main St

Support the  
Businesses along  
Route 66

We at the Oklahoma Route 66 Association would like to take a minute and say a big Thank You to all the businesses that buy and renew their memberships every year. And we salute those of you that volunteer your time when someone else along the road needs your support.

If you are reading this newsletter for the first time or are a long time supporter please take a minute and read our supporting business list. If you are traveling to one of these great locations in the near future stop in and say hello as a fellow Mother Road supporter! You will be glad you did.

Not a member yet? We would love to have you join our organization or maybe you know someone else that might be interested. We have provided a membership application for your convenience. Fill it out and send it in. We look forward to hearing from you.







Miami, OK 74354  
918-540-2425  
**Miami CVB**  
101 N Main St  
Miami, OK 74354  
918-542-4435

**Pizza Hut Express**

101 A St NW  
Miami OK 74354  
(918) 540-2471  
**Pizza Hut**  
1320 N Main St  
Miami 74354  
918-542-6642

**Waylan's Ku-Ku Burger**

915 N Main St  
Miami, OK  
918-542-1696

**SAPULPA**

**American Heritage Bank**

2 S Main Street  
PO Box 1408  
Sapulpa, OK 74066  
918-227-8228

**Boom-a-rang Diner**

126 E Dewey  
Sapulpa, OK 74066  
918-224-6200

**Clark Oil Distributors Inc**

801 W Dewey  
Sapulpa, OK 74066  
918-224-3070

**Copper Oaks B&B**

7806 Hwy 97  
Sapulpa, OK 74066  
918-224-3986

**Creek County Cycles**

619 Mission Street  
Sapulpa, OK 74066  
918-227-9867

**Dewey Street Market**

209 E Dewey  
Sapulpa, OK 74066  
918-227-4508

**Fat Charlie Grill**

1004 E Dewey  
Sapulpa, OK 74066  
918-512-8270

**First United Bank & Trust**

PO Box 1290  
Sapulpa, OK 74067  
918-224-5151

**Freddie's BBQ & Steakhouse**

1425 New Sapulpa Rd  
Sapulpa, OK 74067  
918-224-4301

**Happy Burger**

215 N Mission  
Sapulpa, OK 74066



918-224-7830

**Hickory House BBQ**

262 N Mission  
Sapulpa, OK 74066  
918-224-7830

**R&T Express Grocery**

100 W Dewey  
Sapulpa, OK 74066  
918-227-2021

**Rt 66 Frame Shoppe**

110 E Dewey  
Sapulpa, OK 74066  
918-224-1767

**Sapulpa Chamber**

101 E Dewey  
Sapulpa, OK 74066  
918-224-0170

**Sapulpa Community Theatre**

124 S Water  
Sapulpa, OK 74066  
918-227-2169

**Sapulpa Historical Society**

100 E Lee Ave PO Box 278  
Sapulpa, OK 74066  
918-224-4871

**Sapulpa Main Street**

101 E Dewey  
Sapulpa, OK 74066  
918-224-5709

**Sapulpa Super 8 Motel**

1505 New Sapulpa Road  
Sapulpa, OK 74066  
918-227-3300

**Sapulpa Trolley & Rail**

701 E Dewey  
Sapulpa, OK 74066  
918-224-1515

**Tulsa-Sapulpa Union Railway**

701 E Dewey  
Sapulpa, OK 74066  
918-224-1515

**STROUD**

**Clovis Insurance Agency**

PO Box 270  
Stroud, OK 74079  
918-968-2552

**P & G Originals**

3752 E Highway 66  
Stroud, OK 74069

**Rock Cafe**

114 W. Main  
Stroud, OK 74079  
918-968-3990

**Shoe Tree Trading Post**

3750 E Hwy 6 74834  
405-258-9141



**Sisters Consignments, ETC**

307 W Main  
Stroud, OK 74079  
918-987-1747

**Stable Ridge Winery & Vineyards**

2016 Hwy 66 West  
Stroud, OK 74079  
918-968-2568

**Stroud Chamber of Commerce**

216 W Main Street  
Stroud, OK 74079  
918-968-3321

**Territory Cellars**

1521 N Hwy 99 Suite 1  
Stroud, OK 74079  
918-968-2575

**TULSA**

**Apertures Photo**

1936 S Harvard Ave.  
Tulsa, OK 74112  
918-742-0500

**Circle Cinema**

10 S Lewis Avenue  
Tulsa, OK 74104  
918-585-3456

**Desert Hills Motel**

5220 E 11th St  
Tulsa, OK 74112  
918-834-3311

**Lyon's Indian Store**

111 S Detroit  
Tulsa, OK 74120  
918-582-6372.

**Ollie's Station Restaurant**

4070 Southwest Blvd  
Tulsa, OK 74107  
918-446-0524

**Paintmaster Collision**

5950 E 11th St  
Tulsa, OK 74112  
918-836-8668

**Pyeatts Synthetics**

16701 E Newton Place  
Tulsa, OK 74116  
918-234-3543

**Red Fork Main Street**

PO Box 570978  
Tulsa, OK 74157  
918-445-4457

**Rose Bowl Event Center**

7419 E 11th St  
Tulsa, OK 74112  
918-298-0048

**66 Guitar Shop**

5725 E Admiral Place  
Tulsa, OK 74115  
918-831-9000



**Route 66 Village**

3770 SW Blvd.  
PO Box 57166  
Tulsa, OK 74157  
918-446-4650

**Sandusky Ave Christian Church**

1101 S Sandusky Ave  
Tulsa, OK 74112-5219  
918-834-4427

**The Campbell Hotel**

2636 E 11th Street  
Tulsa, OK 74104  
918-744-5500

**Tulsa Regional Early Ford V8 Club**

of America  
PO Box 4109  
Tulsa, OK 74159

**Vista Tulsa**

2 W 2nd Street  
Suite 150  
Tulsa, OK 74103  
918-560-0229

**VINITA**

**Cowgirlz Spa**

128 S Jones Street  
Vinita, OK 74301  
360-789-5560

**Golden Spike Restaurant**

414 E Illinois  
Vinita, OK 74301  
918-256-7656

**Holiday Inn Express**

232 S 7th  
Vinita, OK 74301  
918-256-4900

**Little Tin Barn**

433055 E Hwy 66  
Vinita, OK 74301  
918-256-5415

**Park Hill Motel & RV Park**

438415 E Hwy 60  
Vinita, OK 74301  
918-256-5511

**Vinita Area Chamber**

125 S Scrapper  
Vinita, OK 74301  
918-256-7133

**WARWICK**

**Seaba Station & Motorcycle Museum**

336992 E Highway 66  
Warwick, OK

**EASTERN  
OKLAHOMA**

**WELLSTON**

**JR's Grill**  
306 E Highway 66  
Wellston, OK 74881  
405-308-2735

**ELSEWHERE**

**Ariston Café**

413 Old Route 66  
Litchfield, IL 62056  
217-324-2023

**Cozy Dog Drive Inn**

2935 S 6th St  
Springfield, IL 62703

**Route 66 Sodas, LLC**

Route 66 Root Beer  
Post Office Box 766  
Lebanon, MO 65536-0766  
417-588-4466

877-667-6327 (toll free)

**University of Utah**

Marriott Library  
295 South 1500 East  
Salt Lake City, UT 84112  
801-581-7744

**Route 66 World**

8776 E Shea Blvd  
Ste B3A-409  
Scottsdale, AZ 85260

# WESTERN OKLAHOMA



## Oklahoma Route 66 Business Directory

### ARCADIA

#### Arcadia Historical & Preservation Society

Box 134  
Arcadia, OK 73007  
405-396-2398

#### Arcadia Tag & Title

PO Box 253  
Arcadia, OK 73007  
405-396-0824

#### Coffee Creek Tree Farm

13899 NE 220  
Arcadia, OK 73007  
405-201355

#### Pops

660 W Highway 66  
Arcadia, OK 73007  
405-928-7677

### BETHANY

#### Bethany Antique Mall

3909 N College Ave  
Bethany, OK 73008  
405-495-7091

#### Boom-a-Rang Diner

3929 W. College Avenue  
Bethany, OK 73008  
405-495-9100

#### City of Bethany

6700 NW 36th St  
Bethany, OK 73008  
405-789-5005

#### DTWN Bethany Merchants Association

3909 N College  
Bethany, OK 73008  
405-495-7091

#### Holiday Inn Express

7840 NW 39th Expressway  
Bethany, OK 73008  
405-787-6262

#### Native America Gallery and Gifts

3823 N College  
Bethany, OK 73008  
405-789-4300  
405-787-3933

### CALUMET

#### Bethany Kars

24825 W Hwy 66  
Calumet, OK 73014  
405-615-3188

#### Cherokee Trading Post

301 S Walbaum Road  
Calumet, OK 73014  
405-884-2502

### CLINTON

#### Clinton Chamber

101 S 4th St  
Clinton, OK 73601  
580-323-2222

#### OK Route 66 Museum

2229 W Gary Blvd  
Clinton, OK 73601  
580-323-7866

### EDMOND

#### Anderson Productions

PO Box 3461  
Edmond, OK 73083  
405-341-1646

#### Edmond CVB

PO Box 2970  
Edmond, OK 73083  
405-216-7781

#### Edmond Historical Society

431 S Blvd  
Edmond, OK 73034  
405-340-0078

#### Fairfield Inn and Suites

301 Meline Drive  
Edmond, OK 73034  
405-341-4818

#### Pin EFX, LLC

3801 Pawnee Circle  
Edmond, OK 73013  
405-623-9125

### Elk City

#### Elk City Chamber of Commerce

PO Box 972  
Elk City, OK 73648  
580-225-0207

#### National Route 66 Museum

2717 W Third  
Elk City, OK 73648  
580-225-3542

#### KOA Kampgrounds

I-40 Exit 50  
Elk City, OK 73644  
580-592-4409

### EL RENO

#### Bill & Clara's Home and Ranch

2701 W 10th  
El Reno, OK 73036  
405-262-6651

#### CDT Synthetics

1804 Mulberry Lane

El Reno, OK 73036

405-831-8741

#### El Reno Chamber

206 N Bickford  
El Reno, OK 73036  
405-262-1188

#### El Reno CVB

110 S Bickford  
El Reno, OK 73036  
405-262-8687

#### Fort Reno Visitors Center

7107 W Cheyenne St  
El Reno, OK 73036  
405-262-3987

#### Larry Nance Photography

113 S Bickford  
El Reno, OK 73036  
405-262-3975

#### Shamrock/66 Automotive

1201 S Rock Island  
El Reno, OK 73036  
405-262-7444

### ERICK

#### C&K Quick Stop

306 W Roger Miller Blvd  
Erick, OK 73645  
580-526-3566

#### Erick Chamber of Commerce

PO Box 1232  
Erick, OK 73645  
580-526-3332

#### Oleta's Gift Shop

801 S Elm  
Erick, OK 73645  
580-526-3009

#### Roger Miller Museum

101 E Roger Miller Blvd  
Erick, OK 73645  
580-526-3833

### LUTHER

#### The Boundary on 66

16001 E Hwy 66  
Luther, OK 73054

### OKLAHOMA CITY

#### Collision Clinic

PO Box 54405  
Oklahoma City, OK 731854  
405-848-7035

#### Glass Boy Studios



# Membership Application

To join the Association or renew an existing membership, please fill out this form, include your check or money order (in US funds, on a US-based bank), and mail to the address below. We also accept MasterCard and Visa for your convenience. NOTE: A \$20 recovery fee will be charged for bad checks.

### Type of annual membership (check one)

- Individual ..... \$20/year  
 Family ..... \$30/year  
 Kids' Club ..... \$10/year  
 \* Overseas ..... \$30/year  
 \* Business ..... \$49/year

- Higher fee pays for shipping on newsletters

### Benefactor

- Bronze \$200/year  Silver \$300/year  Gold \$500/year  Platinum \$1000/year  Titanium \$2000/year

Name \_\_\_\_\_

Business name \_\_\_\_\_

Child's name for Kids' Club \_\_\_\_\_

Address \_\_\_\_\_

Home phone \_\_\_\_\_

Business phone \_\_\_\_\_

Fax \_\_\_\_\_

Email \_\_\_\_\_

Credit card type, # and expiration \_\_\_\_\_

Signature \_\_\_\_\_

*Signature is necessary for credit card payment.*



Oklahoma Route 66 Association

PO Box 446

Chandler, OK 74834

405-258-0008

[www.oklahomaroute66.com](http://www.oklahomaroute66.com)





**Bethany Improvement Foundation**

3737 N. College • No. 224  
Bethany, Oklahoma 73008

**Arlita Harris**  
arlita.harris@gmail.com

(405) 312-0155



*Will Rogers Days  
Claremore, OK  
Nov 1-Nov 4, 2012*

**Our ads mean business!**



Newsletter advertising costs per issue ...

Members	Non-members
Business card: \$7.50	Business card: \$15
¼ page: \$15	¼ page: \$30
½ page: \$20	½ page: \$40
Full Page: \$30	Full page: \$60

Business members get one free business card ad upon joining, so if you are a business member and have not yet submitted a card, Please be sure and send us one!



**WESTERN  
OKLAHOMA**

**Oklahoma Route 66 Business Directory**

6900 Green Meadow Lane  
Oklahoma City, OK 73132  
405-626-3001

**Lincoln Inn Express**  
5405 N Lincoln Blvd  
Oklahoma City, OK 73105  
405-528-1341

**Vorhees & Vorhees PC**  
7701 S Western Ave Suite 201  
Oklahoma City, OK 73139  
405-682-5800

**SAYRE**

**Stardust Restaurant**  
611 NE Highway 66  
Sayre, OK 73662  
580-928-2277

**The Old Shoppe**  
103-105 W Main Street  
Sayre, OK 73662

**The Brick Coffee House**  
109 E Main Street  
Sayre, OK 73662  
580-928-8949

**Western Motel**  
315 NE Hwy 66  
Sayre, OK 73662  
580-928-3353

**TEXOLA**

**YUKON**

**Yukon Chamber of Commerce**  
510 Elm  
Yukon, OK 73099  
405-354-3567

**WARR ACRES**

**WEATHERFORD**

**Best Western Mark Motel**  
525 E Main  
Weatherford, OK 73096  
580-772-3325

**Comfort Inn & Suites**  
1311 E Main  
Weatherford, OK 73096  
580-772-9100

**Doc's Longhorn Trading Post**  
1511 E Main  
Weatherford, OK 73096  
580-772-2277

**Downtown Diner**

123 W Main  
Weatherford, OK 73096  
580-744-1234

**Fairfield Inn & Suites by Marriott**  
201 N Nevada  
Weatherford, OK 73096  
580-774-0800

**Heartland Museum**  
1600 S Frontage Rd  
Weatherford, OK 73096  
580-774-2212

**Rick Koch Oil Company**  
PO Box 685  
Weatherford, OK 73096  
580-772-6076

**Route 66 Thunderbirds**  
2121 E Main  
Weatherford, OK 73096  
580-772-6666

**Stafford Air & Space Museum**  
3000 Logan Road  
Weatherford, OK 73096  
580-772-5871

**Weatherford Chamber**  
522 W Rainey Room 224  
Weatherford, OK 74096  
580-772-7744



**SISTER ASSOCIATIONS**

**Route 66 Association of Illinois**  
110 W Howard St  
Pontiac, IL 61764  
www.il66assoc.org

**Route 66 Association of Missouri**  
PO Box 8117  
St Louis, MO 63156  
www.missouri66.org

**Route 66 Association of Kansas**  
PO Box 66  
Riverton, KS 66770  
620-848-3330

**Kansas Historic Route 66**  
PO Box 66  
Baxter Springs, KS 66713  
620-856-2066

**Old Route 66 Association of Texas**  
PO Box 66  
McLean, TX 79057  
806-779-2225

www.texasroute66.org  
**New Mexico Route 66 Association**

1415 Central Ave NE  
Albuquerque, NM 87106  
www.rt66nm.org

**Historic Route 66 Assn of Arizona**  
PO Box 66  
Kingman, AZ 86402

**Historic Route 66 Assn of Arizona**  
PO Box 66  
Kingman, AZ 86402  
www.azrt66.com

**California Historic Route 66 Association**  
PO Box 64  
Azusa, CA 91702-0064  
www.route66CA.org  
CAHistoricRt66@aol.com

**Dutch Route 66 Association**  
http://www.rte66.nl  
info@rte66.nl  
+31-6-4402-8346

**Route 66 Association Italy**  
Via Milano 1  
Parma, Italy 43100  
(39) 339-571-2414  
route66@tin.it  
http://www.lastrada66.com

**Canadian Route 66 Association**  
PO Box 81123  
Burnaby, BC V5H4K2  
Canada

604-434-1818  
Route66kicks@mac.com  
**National Historic Route 66 Federation**  
P O Box 1848  
Lake Arrowhead, CA 92352-1848  
Phone: 909-336-6131  
Fax: 909-336-1039



## OK Route 66 Association

PO Box 446  
Chandler, OK 74834  
405-258-0008  
www.oklahomaroute66.com

BULK RATE  
US POSTAGE PAID  
CHANDLER, OK  
74834-3851  
PERMIT #66



On The Road Issue 03 October 2012

### Upcoming Events

*Mark Your  
Calendars!*

- Nov 1, 2012 Will Rogers Days—Ends Nov 4 , Claremore, OK
- Nov 17, 2012 Fort Reno Ghost Tour, El Reno, OK
- Nov 16, 2012 Dickens on the Blvd.—Ends Nov 17, Claremore, OK
- Nov 17, 2012 Christmas in the Park—Ends Dec 31, Yukon, OK
- Nov 23, 2012 Christmas in the Park –Ends Dec 31, 2012, Elk City, OK
- Nov 26, 2012 Holiday Ice Skating-Ends Jan 6, Edmond, OK
- Nov 27, 2012 Festival of Lights, Clinton, OK
- Nov 29, 2012 Bethlehem Walk—Ends Dec 2, Tulsa, OK
- Dec 1, 2012 Bethany Christmas Tree Lighting Weekend-Ends Dec 2, Bethany, OK
- Dec 1, 2012 Stroud Christmas Parade, Stroud, OK
- Dec 6, 2012 Christmas Parade, Vinita, OK
- Dec 8, 2012 Edmond Electric Parade of Lights, Edmond, OK
- Dec 16, 2012 Fort Reno Christmas Guns, El Reno, OK

This Newsletter is printed by: **Kinkos** 101 E Second Street, Edmond, OK