



2013 Board

President & Tulsa District Rep:

Brad Nickson

918-231-9539 (cell)

Eastern VP: Blaine Davis

918-694-7390 (cell)

Western VP: Mike Hickey

405-413-0266 (cell)

Secretary &

OK District Rep: Deborah Blair

405-623-9125 (cell)

Treasurer: Vacant

Canadian/Caddo/Blaine

District Rep: Jill Ann Church

405-227-7919 (cell)

Creek District Rep: Frank Gierhart

918-638-6212 (cell)

Custer/Washita/Beckham

District Rep: Vacant

Lincoln District Rep: Ron Burden

918-377-2355 (work)

Rogers/Delaware/Craig

Wayne McCombs

918-341-5707 (Work)

Ottawa: District Rep: Laurel Kane

918-257-4044 (work)

At-Large Representatives

Cletus Simpson

405-240-2800

Executive Director

Marilyn Emde

405-258-0008



WORLD MONUMENTS FUND

Following the dramatic analysis and statistics revealed through the Route 66 Economic Impact Study of 2012, World Monuments Fund (WMF) convened a strategic roundtable to explore the sustainability of the highway as a cultural and recreational venue and an economic engine for the eight states the route passes through.

The event, titled "The Road Ahead," was held on November 20 and 21 at the Disneyland Hotel in Anaheim, California, close to Cars Land, a Disney venture inspired by Route 66. The event was organized by WMF with the support of American Express, and arranged as a series of panel discussions drawing more than 100 people representing government, business, tourism, and

MONUMENTS FUND CONVENES STRATEGIC ROUNDTABLE TO DISCUSS HERITAGE TOURISM AND PRESERVATION ALONG HISTORIC ROUTE 66

preservation.

Amir Eylon, Vice President of Partnership and Development Services for Brand USA, a public-private organization established to promote international travel to the United States, stated: "As the destination marketing origination for the United States, Brand USA has the opportunity to promote both our country's most recognizable icons and the hidden gems, like Route 66. As visitors explore Route 66, they go beyond the gateways and connect along a unique set of authentic experiences that they can only get here.



Chandler, OK

www.oklahomaroute66.com

this issue

Presidents Memo P2

Claremore Sign P3

The Road Ahead P4

Elections P6

Strategic Roundtable con't...

Route 66, also known as the Mother Road, runs from Chicago to Santa Monica and is America's most celebrated automobile highway and a famous symbol of twentieth-century American culture and history. The construction of the interstate highways in the middle of the twentieth century bypassed many communities along Route 66, and subsequently numerous towns and cities along the route have faced economic hardship. The plight of these communities was the basis for the 2006 Disney/Pixar film *Cars*.

Economic Impact Study

"The Road Ahead" followed on the publication of an economic impact study completed in 2012 that shed light on the importance of heritage tourism and historic preservation along Route 66 as a contributor to local, state, and national economies. The study, undertaken by Rutgers, The State University of New Jersey, in collaboration with the US National Park Service Route 66 Corridor Preservation Program and WMF, with the support of American Express, outlines the benefits of heritage preservation for the communities. Among the many noteworthy findings of the study are that tourists spend \$38 million per year in communities along Route 66; preservation through revitalization programs and museums add some \$94 million in annual investments; some 2,400 jobs are created each year; and that economic activities directly related to the route add some \$127 million annually to the GDP. Tourism is often the most important or only economic engine for many of the towns along the route, and Route 66-themed motels, restaurants, and shops anchor the downtowns of many small communities. The preservation of the highway and the revitalization of communities along it are thus inextricably linked. Developing new opportunities for communities along the route through partnerships and preservation activities is key to generating jobs and increasing economic growth.

President's Memo



It's a snowy day in Tulsa as I write this newsletter's memo... I look forward to a warmer drive down 66!

The end of 2013 showed a great beginning of future collaborations that should benefit the entire length of Route 66. In November, the World Monuments Fund invited Route 66 enthusiasts, business owners, city officials and professionals from the tourism and economic development professions to a meeting at the Disneyland Resort in Anaheim, CA. Attendees heard a great number of success stories, lots of good ideas about promoting 66 and how to grow the communities that 66 passes through. I look forward to getting started with some of the ideas I learned. See more details about the meeting elsewhere in this newsletter. Late in January 2014, WMF will be releasing a more thorough recap of the meeting.

One historic event occurred during the meetings in Anaheim. Representatives from all 8 state associations had a chance to meet for the first time. What a fantastic group of folks! I look forward to working with them in the future.

2014 already has a historic event in store for the Oklahoma Route 66 Association. The event was scheduled back in 1989 when the Association was created. You've probably guessed that the event is the 25th birthday of the Association! Later in 2014, please plan to attend our celebration.

The annual meeting is to be held on January 26 at the Chandler Public Library in Chandler. One of the things we have to handle at the annual meeting is election of board members. See the list of positions up for election this year and if you might be willing to serve.

One final thing... Could I get a volunteer or two to help with the Association's social media and web presence? Googling or Binging "oklahoma route 66" shows the Association as the first or second (unsponsored) result. The creation of new content and maintaining traffic flow on the Association's website will help us maintain those coveted spots.

Brad Nickson

Strategic Roundtable con't...

The strategic roundtable highlighted stories of revitalization along the road and the broad international and national interest in traveling Route 66. Capitalizing on these successes and opportunities means effectively utilizing historic preservation as a tool for sustainable development, providing positive economic, social, and environmental benefits to the 5.5 million people who live along the Mother Road. The iconic landscape and idiosyncratic architecture of Route 66—as well as those dedicated to its stewardship—provide a unique backdrop for experiencing the most fundamental of American ideals: freedom, individuality, and opportunity. As a once thriving corridor of commerce and creativity, the Mother Road's past serves as a strong foundation for a revitalized future, marrying old and new to continue to tell the many stories of America's main street.

World Monuments Fund

World Monuments Fund is the leading independent organization devoted to saving the world's treasured places. For nearly 50 years, working in 100 countries, its skilled experts have applied proven and effective techniques to the preservation of important architectural and cultural heritage sites around the globe. Through partnerships with local communities, funders, and governments, WMF seeks to inspire an enduring commitment to stewardship for future generations. Headquartered in New York City, the organization has offices and affiliates worldwide.

www.wmf.org, www.twitter.com/worldmonuments, and www.facebook.com/worldmonuments.

Media Inquiries:

Brittany Brown, 646 424 9594, bbrown@wmf.org

Ben Haley, 646 424 9594, bhaley@wmf.org

A new sign was added to Claremore's Route 66 legacy last October at the J.M. Davis Arms and Historical Museum. The sign is located at the corner of 5th and J.M. Davis Blvd. J.M. Davis Blvd is the original Route 66 built in Claremore in 1926.

"Claremore is a destination point on Oklahoma's Route 66. Thousands of travelers from all over the world tour Route 66 every year. This sign will be a photo op for these travelers visiting Claremore," stated Tanya Andrews, Director of the Claremore Convention and Visitors Bureau. Sponsor of the sign: Melton Sales, The Nut House and the J.M. Davis Arms and Historical Museum.



On Oct 29, 2013 Richard and Arlene Campion of Minnetonka, MN were the 1st visitors to view the new sign.



THE ROAD AHEAD

Core Group Meeting

Background:

Among the great challenges of preserving the historic corridor of Route 66 are its length and its diversity of stakeholders.

Passing through eight states and hundreds of communities, Route 66 interests are represented by a host of federal, state, and municipal agencies as well as various local associations, not-for-profits, and private interests. To effectively capitalize on the economic benefits of and tourism development opportunities along Route 66, a framework for collaboration cum umbrella coalition is needed to weave together these varied entities and provide a conduit for cross-border cooperation, public-private partnerships, and investment strategies.

This meeting was hosted after the two-day strategic roundtable, Route 66: The Road Ahead, which built upon the findings of the Route 66 Economic Impact Study and sought to re-envision the preservation of the Mother Road as a means to broader economic, social, and environmental goals through sustainable tourism. On the third day, a core group of participants convened, including representatives from the state, national, and international Route 66 organizations, Scenic Byway organizations, state tourism offices, state-wide preservation agencies, Departments of Transportation, State Historic Preservation Offices, private business owners, universities, archivists, and others. World Monuments Fund facilitated the meeting with the assistance of the National Park Service Route 66 Corridor Preservation Program.

Aims & Process:

- identify priorities for collaboration in sustainable tourism, economic development, and historic preservation along Route 66;
- assess the existing strengths and needs related to collaboration;
- outline the potential opportunities and challenges for collaboration;
- explore a process for advancing a cooperative framework cum umbrella group; and
- identify next steps for promoting and supporting action.

The session included facilitated brainstorming and break-out discussions, and utilized a SWOC analysis methodology (strength, weaknesses, opportunities, challenges).

Outcomes:

There was early consensus regarding the need for a cooperative framework or group to represent the varied Route 66 interests at a collective or national level. While one or more existing organizations could potentially serve in this capacity, the purpose of the meeting was to develop a road map for how to build a shared vision from the bottom up, and ensure a structure and process for continued stakeholder participation. There are many varied and vested interests along the road, and collaboration will be challenging. But the data on Route 66 tourism and its economic benefits compel collective action; the moment is ripe.

The following provides an initial outline of the priorities identified by the group. A full report on the event will be available in early 2014. The NPS Route 66 Corridor Preservation Program, with the assistance of WMF, will steward the process forward with the creation of a working group to further develop the road map for collaboration.

PRIORITIES

- VISION - Craft a core message and identify primary objective
 - ⇒ Recognize the multiple narratives of the road
 - ⇒ Look at the whole as a sum of parts
 - ⇒ Bring in an outside perspective
 - ⇒ Work towards economic development and community benefits
- STRATEGY
 - ◇ Product Authenticity - Protect the historic assets

The Road Ahead con't...

- ⇒ Protect the historic assets (designation?)
- ⇒ Make/re-make experiences
- ⇒ Incorporate the landscape
- ⇒ Celebrate creativity – combining new and old
- ⇒ Ensure wayfinding

- ◇ Engage/Re-Engage Stakeholders – Reach new audiences (more diverse and younger)
- ⇒ Capitalize on existing connections
- ⇒ Engage local communities
- ⇒ Create teaching tools
- ⇒ Educate the public

- ◇ Emphasize Collaboration – Ensure inclusive representation
- ⇒ Build on data
- ⇒ Work across borders and through multiple industries (esp. tourism & the arts)

- ◇ Resources – Maximize local benefits
- ⇒ Ensure tourism infrastructure


- **PROCESS** – Top down and bottom up, to insure both inclusion and leadership
- ⇒ Expand the toolbox (esp. financial)
- ⇒ Cross promote & market
- ⇒ Brand consistently
- ⇒ Ensure a coherent entity
- ⇒ Incorporate a lobbying function
- ⇒ Get an outside perspective
- ⇒ Use the centennial as an incentive/platform for cooperation
- ⇒ Communicate, coordinate, collaborate

- **COMMUNICATION & MARKETING** – Integrate new technologies and communication tools
- ⇒ Cross promote and market
- ⇒ Brand consistently
- ⇒ Facilitate wayfinding
- ⇒ Make travel info more accessible
- ⇒ Capitalize on the centennial



Gallery @112
112 West Main
Historic Downtown, Sayre, OK 73662
580.928.0002
Facebook: Gallery@112
Website: riversedgeartssociety.weebly.com

ARTS SOCIETY



DOUG TOWNSLEY
AMSOIL DEALER

CDT Synthetics
1804 Mulberry Lane
El Reno, OK 73036
(405) 831-8741
E-mail: cptsynthetics@cox.net
Web: lubedealer.com/cptsynthetics



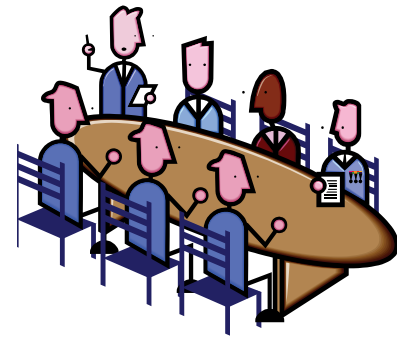
THE NUT HOUSE

(918) 266-1604
Fax (918) 266-5454

26677 S. Hwy 66
Claremore, OK 74019
www.66nuts.com

CLAREMORE, OK

Oklahoma Route 66 Association
Annual Meeting Scheduled
January 26, 2014

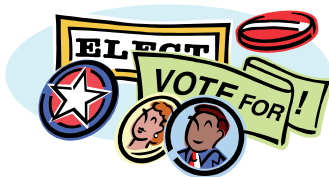


We would like to extend an invitation to all Oklahoma Route 66 Association members to attend the Annual meeting scheduled for January 26, 2014.

**Location: Chandler Public Library,
1021 Manvel Ave.**

**Time: 12 noon—Pot Luck
1pm—Meeting**

Here Ye, Here Ye -
Election of the follow-
ing board positions
will be held.



Treasurer, Secretary, Creek, Custer/
Washita/Beckham, Oklahoma, Ottawa, and
one At Large District Representatives.

If you have been thinking about getting in-
volved in the Oklahoma Route 66 Associa-
tion now is a great time! You will find it is
truly a rewarding endeavor.

The board members serve for a two year
term. Each Board of Trustees member will de-
vote some time each month exclusive of time
spent at annual or special meetings to the affairs
of the Association. (Current By-Laws)

- The **Secretary** will serve on the Executive Board. The Secretary will record the minutes

of the general membership, Executive Commit-
tee, and Board of Trustees meetings. The
Secretary will record attendance at meetings
and keep accurate records of Association busi-
ness. Write the quarterly Newsletter. (Current
By-Laws)

- The **Treasurer** will serve on the Executive Board. The Treasurer is responsible for prepar-
ing and/or obtaining the preparation of the nec-
essary state and Federal tax statements, forms
and sales tax records, and is responsible for
obtaining an audit as determined by the Board
of Trustees annually. The Board of Trustees
may require bonding for the position of Treas-
urer. The amount of the bond will be set by the
Board of Trustees. (Current By-Laws)
- Besides serving a two (2) term, **District Repre-
sentatives** will attend all quarterly and annual
meetings; Solicit ads for the Trip Guide; Distrib-
ute Trip Guides; Serve as Spokesperson and
general coordinator of Association activities in
County; Canvas elected officials in Represent-
atives area of service for Preservation needs
and projects. (Current By-Laws.)

If you have questions please get in touch with
Brad Nickson, President or Marilyn Emde,
Executive Director.

They will be able to answer any questions
you might have.



DONATION FORM

I've enclosed my check in the amount of \$_____.

Please bill my credit card in the amount of \$_____.

Credit card type and expiration date _____

Credit card number _____

Signature _____

This is a:

General donation to Oklahoma Route 66 Association.

Gift in memory of: _____

Name and address of person to be notified of memorial (amounts are not disclosed):

Name _____

Mailing Address _____

City, State, Zip Code _____

E-mail Address _____

Gift in honor of: _____

Name and address of person to be notified of gift (amounts are not disclosed):

Name _____

Mailing Address _____

City, State, Zip Code _____

E-mail Address _____

We will send you a letter that you may use as a tax receipt for your donation. (We value and protect your privacy by not sharing any of your personal information.)

Your Name _____

Street Address _____

City, State, Zip Code _____

E-mail Address _____

Please mail this form and your check (if applicable) to:
Oklahoma Route 66 Association • P.O. Box 446 • Chandler, OK • 74834
Thank you for your generous donation! We appreciate your support.

EASTERN OKLAHOMA

Oklahoma Route 66 Business Directory



We at the Oklahoma Route 66 Association would like to take a minute and say a big Thank You to all the businesses that buy and renew their memberships every year. And we salute those of you that volunteer your time when someone else along the road needs your support. If you are reading this newsletter for the first time or are a long time supporter please take a minute and read our supporting business list. If you are traveling to one of these great locations in the near future stop in and say hello as a fellow Mother Road supporter! You will be glad you did.

Not a member yet? We would love to have you join our organization or maybe you know someone else that might be interested. We have provided a membership application for your convenience. Fill it out and send it in. We look forward to hearing from you.



- AFTON**
Grand Country Lakeside RV Park
 55015 E 270 Road
 Afton, OK 74331
 918-257-5164
Town of Afton
 PO Box 250
 Afton, OK 74331
Route 66 Packards
 12 SE First St
 Afton, OK 74331
 918-257-4044
- Bristow**
Granny's Emporium
 709A S Roland
 Hwy 66 West
 Bristow, OK 74010
 918-367-1727
Hummel Hideaway Homes
 424 S Rowland
 Bristow, OK 74010
 918-519-3510
KREK
 116 West 12th Avenue
 Bristow, OK 74010
 918-367-5501
- CATOOSA**
Catoosa Chamber
 PO Box 297
 650 S Cherokee Suite C
 Catoosa, OK 74015
 918-266-6042
Catoosa Historical Society
 207 N Cherokee
 PO Box 738
 Catoosa, OK 74015
 918-266-6592
DW Correll Museum
 1934 E Pine
 Catoosa, OK 74015
 918-739-3939
Skelly Lodge
 27795 S Skelly road
 Catoosa, OK 74015
 918-266-3331
- CHANDLER**
Bell Cow Ranch Cabins
 341070 E. 890 Road
 Chandler, OK 74834
 405-258-0034
Boom-A-Rang Diner
 912 Manvel Avenue
 Chandler, OK 74834
Chandler Area Chamber
 400 E Route 66
 Chandler, OK 74834
 405-258-0673
Community Thrift Shop
 of Chandler
 921 Manvel Ave
 Chandler, OK 74834
 405-258-8258
Econo Lodge
 600 N. Price Avenue
 Chandler, OK 74834
 405-258-2131
LD's Automotive
 PO Box 486
 Chandler, OK 74834
 405-258-2120
Lincoln County Historical Society
 719 Manvel
 Chandler, OK 74834
 405-258-2425
Lincoln Motel
 740 E 1st Street
 Chandler, OK 74834
 405-258-0200
McJerry's
 310 Manvel Ave
 Chandler, OK 74834
 903-467-6384
Oak Glen RV Park
 347203 E Highway 66
 Chandler, OK 74834
 405-258-2994
- CLAREMORE**
Boom-a-rang Diner
 302 W Will Rogers Blvd.
 Claremore, OK 74017
 918-342-0601
Visit Claremore
 419 W Will Rogers Blvd
 Claremore, OK 74017
 918-341-8688
JM Davis Gun Museum
 333 N Lynn Riggs Blvd
 Claremore, OK 74018
 918-341-5707
Rogers County Historic Society
 121 N Chickasaw
 Claremore, OK 74018
 918-342-1127
Route 66 Sports Bar
 940 S Lynn Riggs Blvd.
 Claremore, OK 74017
 918-342-4033
Shepherd's Cross
 16752 E 450 Road
 Claremore, OK 74017
 918-231-6947
The Nut House, LLC
 2667 S Highway 66
 Claremore, OK 74109
 918-2661604
- CHELSEA**
Chelsea Motor Inn
 321 E Layton
 Chelsea, OK 74016
 918-789-3437
Main Street Diner
 251 W Sixth
 Chelsea, OK 74016
 918-789-2001
CLAREMORE
Boom-a-rang Diner
 302 W Will Rogers Blvd.
 Claremore, OK 74017
 918-341-8688
JM Davis Gun Museum
 333 N Lynn Riggs Blvd
 Claremore, OK 74018
 918-341-5707
Rogers County Historic Society
 121 N Chickasaw
 Claremore, OK 74018
 918-342-1127
Route 66 Sports Bar
 940 S Lynn Riggs Blvd.
 Claremore, OK 74017
 918-342-4033
Shepherd's Cross
 16752 E 450 Road
 Claremore, OK 74017
 918-231-6947
The Nut House, LLC
 2667 S Highway 66
 Claremore, OK 74109
 918-2661604
- DAVENPORT**
Central Cellular
 PO Box 789
 Davenport, OK 74026
Central OK Telephone CO
 PO Box 789
 Davenport, OK 74026
Dan's Bar-B-Que
 PO Box 561
 Davenport, OK 74026
 800-252-8854
Davenport Chamber
 PO Box 66
 Davenport, OK 74026
 800-252-8854
Early Bird Cafe
 615 Highway 66
 Davenport, OK 74026
 918-377-2209
Garwooly's
 1023 N Broadway
 Davenport, OK 74026
 918-377-2230
Marketplace Insurance
 203 Broadway
 Davenport, OK 74026
 918-377-2355
DEPEW
Mountain Creek Lodge
 Of Oklahoma
 21301 W 191 Street S
 Kellyville, OK 74030
- DAVENPORT**
Central Cellular
 PO Box 789
 Davenport, OK 74026
Central OK Telephone CO
 PO Box 789
 Davenport, OK 74026
Dan's Bar-B-Que
 PO Box 561
 Davenport, OK 74026
 800-252-8854
Davenport Chamber
 PO Box 66
 Davenport, OK 74026
 800-252-8854
Early Bird Cafe
 615 Highway 66
 Davenport, OK 74026
 918-377-2209
Garwooly's
 1023 N Broadway
 Davenport, OK 74026
 918-377-2230
Marketplace Insurance
 203 Broadway
 Davenport, OK 74026
 918-377-2355
DEPEW
Mountain Creek Lodge
 Of Oklahoma
 21301 W 191 Street S
 Kellyville, OK 74030
- WILL ROGERS MEMORIAL**
Randy Bowen Chevrolet
 1201 Manvel Ave
 Chandler, OK 74834
 405-258-0055
Rt. 66 Interpretive Center
 400 E Route 66
 Chandler, OK 74834
 405-258-1300
VFW Post 1719
 900726 S 3420 Rd
 Chandler, OK 74834
 405-258-3050
CHELSEA
Chelsea Motor Inn
 321 E Layton
 Chelsea, OK 74016
 918-789-3437
Main Street Diner
 251 W Sixth
 Chelsea, OK 74016
 918-789-2001
CLAREMORE
Boom-a-rang Diner
 302 W Will Rogers Blvd.
 Claremore, OK 74017
 918-341-8688
JM Davis Gun Museum
 333 N Lynn Riggs Blvd
 Claremore, OK 74018
 918-341-5707
Rogers County Historic Society
 121 N Chickasaw
 Claremore, OK 74018
 918-342-1127
Route 66 Sports Bar
 940 S Lynn Riggs Blvd.
 Claremore, OK 74017
 918-342-4033
Shepherd's Cross
 16752 E 450 Road
 Claremore, OK 74017
 918-231-6947
The Nut House, LLC
 2667 S Highway 66
 Claremore, OK 74109
 918-2661604
- DAVENPORT**
Central Cellular
 PO Box 789
 Davenport, OK 74026
Central OK Telephone CO
 PO Box 789
 Davenport, OK 74026
Dan's Bar-B-Que
 PO Box 561
 Davenport, OK 74026
 800-252-8854
Davenport Chamber
 PO Box 66
 Davenport, OK 74026
 800-252-8854
Early Bird Cafe
 615 Highway 66
 Davenport, OK 74026
 918-377-2209
Garwooly's
 1023 N Broadway
 Davenport, OK 74026
 918-377-2230
Marketplace Insurance
 203 Broadway
 Davenport, OK 74026
 918-377-2355
DEPEW
Mountain Creek Lodge
 Of Oklahoma
 21301 W 191 Street S
 Kellyville, OK 74030
- WILL ROGERS MEMORIAL**
Randy Bowen Chevrolet
 1201 Manvel Ave
 Chandler, OK 74834
 405-258-0055
Rt. 66 Interpretive Center
 400 E Route 66
 Chandler, OK 74834
 405-258-1300
VFW Post 1719
 900726 S 3420 Rd
 Chandler, OK 74834
 405-258-3050
CHELSEA
Chelsea Motor Inn
 321 E Layton
 Chelsea, OK 74016
 918-789-3437
Main Street Diner
 251 W Sixth
 Chelsea, OK 74016
 918-789-2001
CLAREMORE
Boom-a-rang Diner
 302 W Will Rogers Blvd.
 Claremore, OK 74017
 918-341-8688
JM Davis Gun Museum
 333 N Lynn Riggs Blvd
 Claremore, OK 74018
 918-341-5707
Rogers County Historic Society
 121 N Chickasaw
 Claremore, OK 74018
 918-342-1127
Route 66 Sports Bar
 940 S Lynn Riggs Blvd.
 Claremore, OK 74017
 918-342-4033
Shepherd's Cross
 16752 E 450 Road
 Claremore, OK 74017
 918-231-6947
The Nut House, LLC
 2667 S Highway 66
 Claremore, OK 74109
 918-2661604

Support the
 Businesses
 along Route 66



EASTERN OKLAHOMA

MIAMI

Chapters

31 N Main St
Miami, OK 74354
918-540-0468

Coleman Theatre

103 N Main St
Miami, OK 74354
918-540-2425

Miami CVB

101 N Main St
Miami, OK 74354
918-542-4435

Ottawa County

Historical Society/ Dobson Museum

110 A SW
Miami, OK 74355
918-542-5388

Pizza Hut Express

101 A St NW
Miami OK 74354
(918) 540-2471

Pizza Hut

1320 N Main St
Miami OK 74354
918-542-6642

Waylan's Ku-Ku Burger

915 N Main St
Miami, OK
918-542-1696

SAPULPA

American Heritage Bank

2 S Main Street
PO Box 1408
Sapulpa, OK 74066
918-227-8228

Boom-a-rang Diner

126 E Dewey
Sapulpa, OK 74066
918-224-6200

Copper Oaks B&B

7806 Hwy 97
Sapulpa, OK 74066
918-224-3986

Creek County Cycles

619 Mission Street
Sapulpa, OK 74066
918-227-9867

Dewey Street Market

209 E Dewey
Sapulpa, OK 74066
918-227-4508

First United Bank & Trust

PO Box 1290
Sapulpa, OK 74067
918-224-5151

Freddie's BBQ & Steakhouse

1425 New Sapulpa Rd
Sapulpa, OK 74067
918-224-4301

Grand Designs

11 N. Water Street
Sapulpa, OK 74066
918-224-4900

Happy Burger

215 N Mission
Sapulpa, OK 74066
918-224-7750

Hickory House BBQ

262 N Mission
Sapulpa, OK 74066
918-224-7830

Miss Scarlet's

Tea Room

320 S Main St.
Sapulpa, OK
918-512-8444

R&T Express Grocery

100 W Dewey
Sapulpa, OK 74066
918-227-2021

Rt 66 Frame Shoppe

110 E Dewey
Sapulpa, OK 74066
918-224-1767

Sapulpa Chamber

101 E Dewey
Sapulpa, OK 74066
918-224-0170

Sapulpa Community Theatre

124 S Water
Sapulpa, OK 74066
918-227-2169

Sapulpa Historical Society

100 E Lee Ave PO Box 278
Sapulpa, OK 74066
918-224-4871

Sapulpa Main Street

101 E Dewey
Sapulpa, OK 74066
918-224-5709

Sapulpa Super 8 Motel

1505 New Sapulpa Road
Sapulpa, OK 74066
918-227-3300

Sapulpa Trolley & Rail

701 E Dewey
Sapulpa, OK 74066
918-224-1515

Tulsa-Sapulpa Union Railway

701 E Dewey
Sapulpa, OK 74066
918-224-1515

STROUD

Clovis Insurance Agency

PO Box 270
Stroud, OK 74079
918-968-2552

Shoe Tree Trading Post

3750 E Hwy 6 74834
405-258-9141

Sisters Consignments, ETC

307 W Main
Stroud, OK 74079
918-987-1747

Stable Ridge Winery & Vineyards

2016 Hwy 66 West
Stroud, OK 74079
918-968-2568

Stroud Chamber of Commerce

216 W Main Street
Stroud, OK 74079
918-968-3321

Territory Cellars

1821 N Highway 99
Stroud, OK 74079
918-968-2575

TULSA

Apertures Photo

1936 S Harvard Ave.
Tulsa, OK 74112
918-742-0500

Best Western Tulsa Inn

3212 S 79 E Aveune
Tulsa, OK 74145
918-858-2100

Desert Hills Motel

5220 E 11th St
Tulsa, OK 74112
918-834-3311

EMF, Inc.

1125 S 110 E Avenue
Tulsa, OK 74128
918-437-7470

Generations Antique Mall

4810 E 11th Street
Tulsa, OK 74112
918-834-7577

Ollie's Station Restaurant

4070 Southwest Blvd
Tulsa, OK 74107
918-446-0524

Paintmaster Collision

5950 E 11th St
Tulsa, OK 74112
918-836-8668

Red Fork Main Street

PO Box 570978
Tulsa, OK 74157
918-445-4457

66 Guitar Shop

5725 E Admiral Place
Tulsa, OK 74115
918-831-9000

Route 66 Village

3770 SW Blvd.
PO Box 57166
Tulsa, OK 74157
918-446-4650

Sandusky Ave Christian Church

1101 S Sandusky Ave
Tulsa, OK 74112-5219
918-834-4427

The Campbell Hotel

2636 E 11th Street
Tulsa, OK 74104
918-744-5500

Tulsa Regional Early Ford V8 Club

of America
PO Box 4109
Tulsa, OK 74159

Vista Tulsa

1 W 3rd
Suite 100
Tulsa, OK 74103
918-560-0229

VINITA

Holiday Inn Express

232 S 7th
Vinita, OK 74301
918-256-4900

Little Tin Barn

433055 E Hwy 66
Vinita, OK 74301
918-256-5415

Park Hill Motel & RV Park

438415 E Hwy 60
Vinita, OK 74301
918-256-5511

Vinita Area Chamber

105 W Delaware
Vinita, OK 74301
918-256-7133

WARWICK

Seaba Station & Motorcycle Museum

336992 E Highway 66
Warwick, OK

WELLSTON

ELSEWHERE

Ariston Café

413 Old Route 66
Litchfield, IL 62056
217-324-2023

Blue Swallow Motel

815 E. Rt. 66 Blvd.
Tucumcari, NM 88401
575-461-9849

Carousel Advertising

512 Lou Allard Drive
Drumright, OK 74030
Cushing, OK 74023
918-798-6176

Cozy Dog Drive Inn

2935 S 6th St
Springfield, IL 62703

Missouri Neon

3160 W Kearney St.
Springfield, MO
800-788-1778

Route 66 Sodas, LLC

Route 66 Root Beer
Post Office Box 766
Lebanon, MO 65536-0766
417-588-4466

WESTERN OKLAHOMA



Oklahoma Route 66 Business Directory

ARCADIA

Arcadia Historical & Preservation Society

Box 134
Arcadia, OK 73007
405-396-2398

Arcadia Tag & Title

PO Box 253
Arcadia, OK 73007
405-396-0824

Pops

660 W Highway66
Arcadia, OK 73007
405-928-7677

BETHANY

Apple Tree Antique Gallery

6740 NW 39th Expressway
Bethany, OK 73008
405-495-0602

Bethany Antique Mall

3909 N College Ave
Bethany, OK 73008
405-495-0602

Bethany Improvement Foundation

3737 N College #224
Bethany, OK 73008
405-312-0155

Boom-a-Rang Diner

3929 W. College Avenue
Bethany, OK 73008
405-495-9100

City of Bethany

6700 NW 36th St
Bethany, OK 73008
405-789-5005
405-495-7091

Holiday Inn Express

7840 NW 39th Expressway
Bethany, OK 73008
405-787-6262

Native America Gallery and Gifts

3823 N College
Bethany, OK 73008
405-789-4300
405-787

Simmons Auto Service

6719 N.W. 36th
Bethany, OK 73008
405-789-9078-3933

CALUMET

Bethany Kars

24825 W Hwy 66
Calumet, OK 73014
405-615-3188

Cherokee Trading Post

301 S Walbaum Road
Calumet, OK 73014
405-884-2502

CLINTON

Clinton Chamber

101 S 4th St
Clinton, OK 73601
580-323-2222

OK Route 66 Museum

2229 W Gary Blvd
Clinton, OK 73601
580-323-7866

EDMOND

Anderson Productions

PO Box 3461
Edmond, OK 73083
405-341-1646

Edmond CVB

PO Box 2970
Edmond, OK 73083
405-216-7781

Edmond Historical Society

431 S Blvd
Edmond, OK 73034
405-340-0078

Fairfield Inn and Suites

301 Meline Drive
Edmond, OK 73034
405-341-4818

Pin EFX, LLC

3801 Pawnee Circle
Edmond, OK 73013
405-623-9125

Elk City

Elk City Chamber of Commerce

PO Box 972
Elk City, OK 73648
580-225-0207

National Route 66 Museum

2717 W Third
Elk City, OK 73648
580-225-3542

KOA Campgrounds

I-40 Exit 50
Elk City, OK 73644
580-592-4409

EL RENO

Bill & Clara's Home and Ranch

2701 W 10th
El Reno, OK 73036
405-262-6651

CDT Synthetics

1804 Mulberry Lane
El Reno, OK 73036
405-831-8741

El Reno Chamber

206 N Bickford
El Reno, OK 73036
405-262-1188

El Reno CVB

110 S Bickford
El Reno, OK 73036
405-262-8687

Fort Reno Visitors Center

7107 W Cheyenne St
El Reno, OK 73036
405-262-3987

Larry Nance Photography

113 S Bickford
El Reno, OK 73036
405-262-3975

ERICK

Erick Chamber of Commerce

PO Box 1232
Erick, OK 73645
580-526-3332

Roger Miller Museum

101 E Roger Miller Blvd
Erick, OK 73645
580-526-3833

HYDRO

Nutopia Nuts N'More

206 W Main Street
Hydro, OK 73048
405-663-2330

LUTHER

The Boundary on 66

16001 E Hwy 66
Luther, OK 73054

OKLAHOMA CITY

Collision Clinic

444 W Wilshire
Oklahoma City, OK
405-848-7035



Membership Application

To join the Association or renew an existing membership, please fill out this form, include your check or money order (in US funds, on a US-based bank), and mail to the address below. We also accept MasterCard and Visa for your convenience. NOTE: A \$20 recovery fee will be charged for bad checks.

Type of annual membership (check one)

- Individual \$20/year
 Family \$30/year
 Kids' Club \$10/year
 * Overseas \$30/year
 * Business \$49/year

• Higher fee pays for shipping on newsletters

Benefactor

- Bronze \$200/year Silver \$300/year Gold \$500/year Platinum \$1000/year Titanium \$2000/year

Name _____

Business name _____

Child's name for Kids' Club _____

Address _____

Home phone _____

Business phone _____

Fax _____

Email _____

Credit card type, # and expiration _____

Signature _____

Signature is necessary for credit card payment.



Oklahoma Route 66 Association

PO Box 446

Chandler, OK 74834

405-258-0008

www.oklahomaroute66.com



UNIQUE SOUVENIRS
CORPORATE BRANDING

PIN EFX • LLC

CUSTOM JEWELRY
AND LAPEL PINS.

405.341.9956



On behalf of the Oklahoma Route 66 Association, I would like to thank the anonymous donor of the printed envelopes. This was a very generous gesture and greatly appreciated. Marilyn Emde, Executive Director Oklahoma Route 66 Association .

Our ads mean business!



Newsletter advertising costs per issue ...

Members	Non-members
Business card: \$7.50	Business card: \$15
¼ page: \$15	¼ page: \$30
½ page: \$20	½ page: \$40
Full Page: \$30	Full page: \$60

Business members get one free business card ad upon joining, so if you are a business member and have not yet submitted a card, Please be sure and send us one!



**WESTERN
OKLAHOMA**

Oklahoma Route 66 Business Directory

- Lincoln Inn Express**
5405 N Lincoln Blvd
Oklahoma City, OK 73105
405-528-1341
- Vorhees & Vorhees PC**
7701 S Western Ave Suite 201
Oklahoma City, OK 73139
405-682-5800
- Will Rogers Theatre**
4322 N Western
Oklahoma City, OK 73118
405-525-2294
- City of Weatherford Tourism**
522 W. Rainey
Weatherford, OK 730962-9100
- Doc's Longhorn Trading Post**
1511 E Main
Weatherford, OK 73096
580-772-2277
- Downtown Diner**
123 W Main
Weatherford, OK 73096
580-744-1234
- Heartland Museum**
1600 S Frontage Rd
Weatherford, OK 73096
580-774-2212
- Route 66 Thunderbirds**
2121 E Main
Weatherford, OK 73096
580-772-6666
- Stafford Air & Space Museum**
3000 Logan Road
Weatherford, OK 73096
580-772-5871
- Weatherford Chamber**
522 W Rainey Room 224
Weatherford, OK 74096
580-772-7744
- New Mexico Route 66 Association**
1415 Central Ave NE
Albuquerque, NM 87106
www.rt66nm.org
- Historic Route 66 Assn of Arizona**
PO Box 66
Kingman, AZ 86402
www.azrt66.com
- California Historic Route 66 Association**
PO Box 64
Azusa, CA 91702-0064
- Dutch Route 66 Association**
http://www.rte66.nl
info@rte66.nl
+31-6-4402-8346
- Route 66 Association Italy**
Via Milano 1
Parma, Italy 43100
(39) 339-571-2414
- Canadian Route 66 Association**
PO Box 81123
Burnaby, BC V5H4K2
Canada
604-434-1818
- National Historic Route 66 Federation**
P O Box 1848
Lake Arrowhead, CA 92352-1848
Phone: 909-336-6131
Fax: 909-336-1039
- SISTER ASSOCIATIONS**
- Route 66 Association of Illinois**
110 W Howard St
Pontiac, IL 61764
www.il66assoc.org
- Route 66 Association of Missouri**
PO Box 8117
St Louis, MO 63156
www.missouri66.org
- Route 66 Association of Kansas**
PO Box 66
Riverton, KS 66770
620-848-3330
- Kansas Historic Route 66**
PO Box 66
Baxter Springs, KS 66713
620-856-2066
- Old Route 66 Association of Texas**
PO Box 66
McLean, TX 79057
806-779-2225
www.texasroute66.org
- TEXOLA**
- YUKON**
- Mercantile Store**
430 West Main
Yukon, OK 73099
405-642-8614
- Yukon Chamber of Commerce**
510 Elm
Yukon, OK 73099
405-354-3567
- WARR ACRES**
- WEATHERFORD**
- Best Western Mark Motel**
525 E Main
Weatherford, OK 73096
580-772-3325
- Comfort Inn & Suites**
1311 E Main
Weatherford, OK 73096





OK Route 66 Association

PO Box 446
Chandler, OK 74834
405-258-0008
www.oklahomaroute66.com

BULK RATE
US POSTAGE PAID
CHANDLER, OK
74834-3851
PERMIT #66



On The Road Issue 08 January 2014

Jan 9—Jan 11	Winter Quilt Show, Okla. City, OK	Feb. 6-7	SWOSU Jazz Festival, Weatherford, OK
Jan. 17 –19	International Finals Rodeo, OKC		
Jan. 24-26	Green Country Home and Garden Show, Tulsa, OK	Feb. 8	Yukon Chocolate Festival, Yukon, OK
Jan. 25	Mad Dog Demolition Derby, Claremore, OK	Feb 14-16	Vintage Show, Tulsa, OK
Jan. 25	Miami Tribe Stomp Dance, Miami, OK	Feb. 15-16	Motorcycle and Car Show, Oklahoma City, OK
Jan 31 - Feb. 1	Motorhead Events Arenacross Tulsa, OK	Mar. 1	Bob Wills Birthday Bash, Tulsa, OK
		Mar. 15	Fort Reno Ghost Tour, Fort Reno, OK

*Mark Your
Calendars!*