



## 2014 Board

President & Tulsa District Rep:

Brad Nickson

918-231-9539 (cell)

Eastern VP: Blaine Davis

918-694-7390 (cell)

Western VP: Mike Hickey

405-413-0266 (cell)

Secretary & OK District Rep:

Deborah Blair

405-623-9125 (cell)

Treasurer: Vacant

Canadian/Caddo/Blaine

District Rep: Jill Ann Church

405-227-7919 (cell)

Creek District Rep: Frank Gierhart

918-638-6212 (cell)

Custer/Washita/Beckham

District Rep: Doris Ray

580-343-2844

Lincoln District Rep: Ron Burden

918-377-2355 (work)

Rogers/Delaware/Craig

Wayne McCombs

918-341-5707 (Work)

Ottawa: District Rep: Laurel Kane

918-257-4044 (work)

At-Large Representatives

Cletus Simpson

405-240-2800

Linda Hobbs

918-2325098

Executive Director

Marilyn Emde

405-258-0008



## this issue

President's Memo P4

Business Spotlight P5

Who Am I? P8

## Call to Action: Say "YES" to HB2812

Route 66 Enthusiasts, this is a crucial time in Oklahoma Bicycling Coalition's (OBC) efforts to have Route 66 designated as a US Bike Route. In December 2013, OBC presented the Oklahoma Department of Transportation (ODOT) twenty-nine support letters from municipalities, biking clubs, and visitor bureaus in support of the route designation.



State Senator Patrick Anderson introduced SJR 13 for legislative consideration, directing the

Department of

Transportation to apply for official designation.

The Department of Transportation

will make a decision on nominating Route 66 as a US bike route in the near future.



Representative Lewis Moore opened a 2014 legislative bill to direct ODOT to sign the form and submit the

application. A meeting was held Feb. 12, 2014 at the Capitol with Rep. Lewis Moore, ODOT director and OBC U.S. Bike Route 66 committee members to discuss obstacles to approving U.S.BR 66. There



Chandler, OK

## HB 2812 Cont.....

is resistance because of the opinion that Route 66 is not safe for bicyclists. Plans for adding shoulders are years in the future. Is it back to the drawing board? Let's hope not!

Bicycle Tourism is an economic generator for local communities. People riding bikes through our state will spend money on food and lodging, often times spending more than their automobile counterparts because of the extra time traveling. There are efforts underway by the other Route 66 states to designate a U.S. Bike Route 66. It would be unfortunate if Oklahoma lagged in it's approval.

We know you are interested in raising Route 66's image as a biking state to a national level and now is the time to contact your legislator and ODOT. Make your opinion heard. Would you take a few minutes to send a letter, email or phone call to your Oklahoma Senator and Representative signaling your support of this bill?

Find your Representative:

<http://www.okhouse.gov/FindMyLegislature.aspx?State=OK>

Find your Senator:

<http://www.oksentate.gov/FindMyLegislature.aspx>

You can check the web links at:

<http://obc1voice.org>

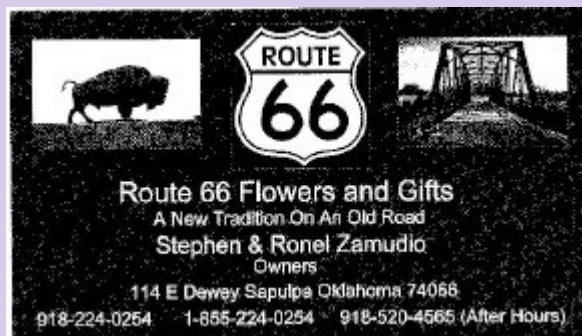


## Oklahoma Route 66 Association links with AmazonSmile

The Oklahoma Route 66 Association is participating in a new program funded by online retailer Amazon. The program is called AmazonSmile and is funded by the AmazonSmile Foundation.

AmazonSmile donates 0.5% of your eligible Amazon purchase amount to the Association. It's really simple. Just follow this link: <http://smile.amazon.com/ch/73-1351108> and make your purchase. A quick check showed many of the most popular Route 66 related books are eligible!

While, the Oklahoma Route 66 Association would prefer you to shop with the businesses along Oklahoma's stretch of Route 66, the reality is you are probably shopping online too. Why not shop online in a way that gives a little something back to the Mother Road?



## Arcadia Herb Fest

Herb Fest features plants for sale, as well as soaps, lotions and food. This event also features entertainment, a children's event tent, organic gardens, flowers, farm store, featured wineries and hay rides. Herb Fest is held at Crestview Farms, a farm that grows certified-organic produce, as well as both warm and cool season vegetables. Take a garden tour or shop for pure prairie goat cheese, salsas, dips, jams, grape juice, honey products and healthy dog treats in the farm's on-site store. May 03, 2014



## Bethany 66 Festival



The Bethany 66 Festival is a family-friendly event featuring food, downtown sidewalk sales, antiques, commercial exhibits and children's activities. It all begins Friday night with a car cruise and bluegrass concert. On Saturday, browse through rows of classic cars in the Diffie Motor Car Show and enjoy a myriad of live entertainment acts in the on-site entertainment tent. The Bethany 66 Festival also features arts and crafts vendors and live music throughout the day as well as a children's parade. May 23, 2014 to May 24, 2014

## Weatherford 66 Westfest

There is fun for everyone at the 66WESTfest in Weatherford. Come celebrate art, music and everything Route 66 and enjoy live performances from Grammy award winning artists. This family friendly festival features Brave Combo and the Sugar Free Allstars on the stage to fill the Pioneer Cellular Event Center with music. There will also be performances from other local musicians and artists will have booths set up on site.

Apr 12, 2014



## Clinton Route 66 Festival



Get your kicks on Route 66 with festivities that include a car and bike show, poker run, free concert, vendors, Wiener National dog races, free hot dogs and more. The annual Clinton Route 66 Festival invites visitors to compete or simply browse through the contestants in the Route 66 Car, Truck and Bike Show. Come to the Clinton Route 66 Festival Friday night for a free concert, downtown cruise and burn-out contest in the heart of downtown. Free Bar-S hot dogs and soda will also be served. Saturday's festivities begin with the car show, a Route 66 battle of the bands and the Backyard BBQ Cook-Off. The annual poker run will begin at 4:30pm. Over \$5,000 in cash prizes will be awarded this year. May 24, 2014

# Presidents Memo...



We hope you enjoyed the bonus edition of the Oklahoma Route 66 Association's newsletter sent in January! So much great news to share!

From the Association board elections at the January meeting. I want to welcome the returning board members and thank them for their continued support. Returning board members; Frank Gierhart—Creek District; Laurel Kane—Ottawa District; Deborah Blair Secretary and Oklahoma District. Doris Ray was elected to serve as the Custer/Washita/Beckham District. After an absence, I'm glad Doris is returning. I also want to welcome Linda Hobbs as our newest board member. Linda is a hard working volunteer at the Blue Whale. If you've seen the mushrooms at the Blue Whale, you've seen some of her hard work!

Every two years the Association holds a Hall of Fame induction. 2014 is one of those years. What's that? You didn't know there was a Oklahoma Route 66 Hall of Fame. There is and it's proudly housed at the Oklahoma Route 66 Museum in Clinton. This year's ceremony will be held October 18 at the museum. In this issue of the newsletter, please find information about making nominations for selection into the Hall of Fame for 2014.

Since we'll be at the Clinton museum, we asked Pat Smith, museum director, if we could also have the Association's 25th birthday celebration there. She graciously agreed! So, we'll be having a birthday celebration along with the Hall of Fame induction. Thank you Pat!

**Brad Nickson**



## 2014 HALL OF FAME

Dear Association Member,

Every two years, two individuals, one living and one deceased, are selected to be inducted into the Oklahoma Route 66 Hall of Fame. We are now seeking nominations for the 2014 awards. The Hall of Fame ceremony will be held October 18 in Clinton at the Oklahoma Route 66 Museum.

Information needed for nomination:

Full name of Nominee (state if living or deceased)

Biography of Nominee (nominee must live/have lived in Oklahoma)

Nominee's Contribution(s) to Route 66

Reason you feel this nominee deserves this award

Be prepared to furnish a portrait style picture of Nominee

You may nominate more than one person

Include your name, address, and phone number in case the judges need clarification on any information

The deadline for nominations is July 7, 2014. Please mail your nomination to the Oklahoma Route 66 Association state office at P.O. Box 446 Chandler, OK 74834.

## Oklahoma Route 66 Business Spotlight

# **Lincoln County Historical Society/ Museum of Pioneer History**

The Lincoln County Historical Society and Museum of Pioneer History is located on Route 66 at 717 Manvel Avenue in Chandler, OK.

The society's major function is to discover and collect any material which may help to establish or illustrate the history of Lincoln county; it's exploration, settlement, development, and activities in



peace and in war; science, agriculture, manufacturing, trade and transportation. They have collected printed material such as gazettes, directories, newspapers, pamphlets, catalogs, circulars, handbills, programs and posters.

The public will reap the benefits from their efforts in a rich and interesting way. Exhibits include: A Historical display of artifacts and photographs from the Sac and Fox Nation as well as other Native American tribes with connections to Lincoln County; memorabilia from legendary Lincoln Coun-



These stunning original murals greet visitors as they enter the main gallery of the museum and represent a "brief history of Lincoln County, Oklahoma."

ty U.S. Marshal William (Bill) Tilghman, a member of the famous Oklahoma "Three Guardsmen" and there is an early Linotype type-setting machine and an antique printing press and cameras showing over a century of photographic progression.

Memorabilia and photographs tell the story of photographer, local jeweler and avid cigar smoker, Bennie Kent. It includes his Camera, famous black bowler and original movie poster and a copy of the movie, "Passing of the Oklahoma Outlaw" produced by the Eagle Film Company, the company he partnered with



Marshal Bill Tilghman to create.

## OK Route 66 Business Spotlight...

The military men and woman of this great nation



are honored in the large exhibit room, on the second floor, starting with the First National Guard Encampment in Chandler and moving through other American conflicts .



Fay Armstrong with her signature marionette.

Following the legacy of Chandler teacher Fay Armstrong who used her "little characters", marionettes from the 1930s and '40s, to teach her classes, hundreds of third and

fourth grade Lincoln County school children visit the Museum to learn the history of Lincoln County much as those children did in times gone by. The plays are presented by well-known professional puppeteer, actress and playwright, Joann McMillian.

There are wonderful replicas of a typical early schoolroom,



Joann McMillian, actress and playwright

doctors office, and apartment housed in the second story of the museum. The rooms used for the apartment are those of an actual apartment where the family that operated the first floor store lived.



The Wilma Elizabeth McDaniel Exhibit is on display. Wilma became known as the "Okie Poet" and in 1976 she was designated Poet Laureate of Tulare, California. McDaniel left copies of almost all of her fifty books as well as her personal letters and writings to the Lincoln County Historical Society, making it the largest single collection of her work at any one location.

Lena Sawner Exhibit and School room. Lena Sawner began teaching at Douglass School 1902-3. The collection contains pictures of her home, her showcase yard, and her business property on Manvel Avenue. Also included are photographs of her with of students and copies of diplomas signed by Lena.



Lena Sawner

The Children's Resource Center is booked for parties such as Baby Showers, Birthdays, Anniversaries. It is also used for events such as the Christmas Market, Craft Shows, and LCHS Fundraiser Luncheons/Events. Upcoming events include:

**April 2, 2014 Spaghetti Luncheon**— 11am to 1pm. You can purchase tickets at the museum on from any board member.

**September 27, 2014 Wine & Palette** - 6 pm This fun event is held during the Chandler Pioneer Festival. Don't miss it!

## Woolly Weekend at Shepherd's Cross



Come to Woolly Weekend at Shepherd's Cross for a sheep-shearing experience on a working sheep farm. Walk through the barn and observe "Sheep to Shawl" techniques as shepherds and shepherdesses shear, wash, spin and weave the wool into a usable product. Shepherd's Shop will also be open, offering a great collection of woolly and farm-related gifts. Demonstrations throughout the day will include the art of using spinning wheels, washing wool, using looms, knitting, crocheting, felting, drop spindles and other wool crafting. The Bible Garden will also be open for mini-tours with a tour guide, or visitors can enjoy a self guided tour. Apr 25, 2014 to Apr 26, 2014

## Route 66 Days—Elk City

Route 66 Days in Elk City features fun and excitement for the whole family. Join the fun at the Red Dirt Rodder Car Show and Grudge Match at Ackley Park. Hear the engines roar at the stock car races at Elk City Speedway. Shop 'til you drop in beautiful downtown at Route 66 Days as over 40 retail merchants roll out the savings for the once a year sale, and Elk City will host a city-wide garage sale. There will also be a youth basketball tournament as well as a golf tournament for sports lovers assuring there is something for everyone at Route 66 Days. Jun 05, 2014 to Jun 08, 2014



## Sapulpa Blowout

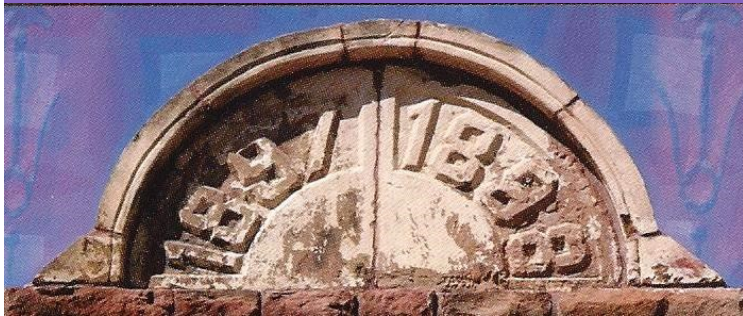


An annual event held in downtown Sapulpa since 1990, the Route 66 Blowout celebrates the nostalgia of the Mother Road with a well-attended car, motorcycle and truck show. In addition, the Route 66 Blowout features a juried art show and sale, historic walking tours of Sapulpa, live music, crafts and commercial vendors. Bring the kids for a wide variety of activities tailored specifically for them and don't forget to visit a myriad of food vendors for tasty treats and fair food delicacies. Jun 07, 2014

## El Reno's Small Town Weekend

Bring the family to a weekend of festivities during El Reno's Small Town Weekend celebration. The Small Town Weekend will also be filled with children's activities, festival food, vendors, live entertainment and more. On Saturday, head out to the car show to admire classic and modified cars, among other sleek vehicles. Kids can bring their own "cars" to race in the hot wheel race, which starts at 9am. A closed route cruise on Route 66 in the evening closes out the day's events. On Sunday, visit the Farm bureau Building for hot homemade cinnamon rolls and coffee, as well as live gospel music. Over in Adam's Park, an old fashioned chuckwagon lunch is served at noon followed by the poker run from 1-3:30pm. From 3-4pm, watch cars burn up the pavement as they speed down this classic highway. Drag racing on old Route 66 closes out El Reno's Small Town Weekend from 4-7pm. Jun 07, 2014 to Jun 08, 2014





# WHO AM I?

Do you have that big box of old photos sitting in your attic or tucked under the bed because you have no idea who they are! But you don't get rid of them because just maybe some relative will come by and be able to put a name to a face from long ago.

The Lincoln County Genealogical Society has the same dilemma! Families around Lincoln county have donated photos, albums, yearbooks etc. because they can't identify the people.



Carol Beckman holds a picture waiting to be identified.

The Exhibit of the Month for March 2014 will be **WHO AM I?** If you are traveling down Route 66 and your roots hail from Ok-

lahoma or Lincoln county stop by the exhibit. You just might find a picture of your great grandmother



Mears and Nixon Family Collection that just arrived.

to add to your family archives.

The hours at the Museum of Pioneer History are **Tuesday thru Saturday from 10am to 4pm.**

Speaking of archives, are you are

compiling your family history? Be prepared to stay awhile. The Lincoln County Historical Society library is located in the Museum. Volunteers use the tenac-

ity of private detectives to research and help visitors research their genealogy by sorting through the thousands of pages of family papers, microfiche, cemetery records and other documents on a daily basis. Requests typically come by letter or email, or are voiced by travelers researching their Lincoln County



Betty Thorsen has volunteered at the Lincoln County Historical Society for the past 7 years.

Oklahoma heritage. You can mail in a request for researchers. The cost is \$10 plus \$1 per page copied for you or call 405-258-2425 for assistance.

**pinex**  
pinex.com

At PinEX, each custom die is hand crafted to exacting standards, replicating the finest details and completed in gold or silver plate finishes. The result is a lasting superior quality pin you can be proud to share.

(405) 341-9956 deborah@pinex.com



## Heartland Cruise Car Show

Come and watch classic cars cruise down Route 66 on Friday evening and then return on Saturday to see them displayed throughout Weatherford's Rader Park. This annual event will also include food, vendors, crafts, games and awards for participants and spectators alike. Don't miss the tailgate party on Friday during cruise night or the poker run, burn out contest and loud exhaust contest on Saturday. Jun 13, 2014 to Jun 14, 2014



## Stroud's Historic Route 66 Wine & Food Festival



Stroud has the distinction and honor of being Oklahoma's Winery and Grape Capital and also has the wonderful advantage of having Historic Route 66 running right through the heart of downtown. The Historic Route 66 Wine & Food Festival will feature wineries from across Oklahoma. Taste different wines and try some of the gourmet foods available at the festival, including a variety of cheeses. Browse vendor booths at the Historic Route 66 Wine and Food Festival for a wide selection of Made In Oklahoma products, original jewelry and artwork. Visit the car show and admire the cars on display while enjoying live music. Jun 14, 2014

## Chandler Ice Cream Festival

Spend the afternoon enjoying endless scoops of delicious ice cream at the annual Ice Cream Festival in Chandler. Held in honor of Chandler's Hiland Dairy plant, the Ice Cream Festival will feature free ice cream, free inflatable rides, live music by local talent and plenty of food vendors. Bring your lawn chairs and blankets and relax while listening to the main acts on the festival's entertainment stage. Kids will enjoy an afternoon of face painting, clowns and balloon animals at this family-friendly festival. Enter the homemade ice cream competition, or simply venture from booth to booth sampling the tasty results. Jun 14, 2014



## Claremore Hot Rods & Heroes Car Show & Poker Run



Live music, awesome cars and generous raffles await you at the Hot Rods & Heroes Car Show & Poker Run in Claremore. Browse rows of cars while dining on delicious barbecue and see what cars take home awards in 11 categories. Dash plaques will also be awarded to the first 150 cars to register. Guests can also participate in the poker run, which awards the top two finishers.

Jun 14, 2014



The Oklahoma Route 66 Association proudly celebrates 25 years in business on, Oct 16, 2014. A celebration is planned in conjunction with the awarding of the 2014 Hall of Fame Awards to be held at the Oklahoma Route 66 Museum in Clinton, OK on October 18, 2014.

The purpose of the Oklahoma Route 66 Association is to promote, enhance, perpetuate, and encourage the development of tourism, economic opportunities, and historic resources and landmarks along the Oklahoma's section of Route 66. The Association's focus is on the portion of the Route within the borders of the State of Oklahoma which includes the counties of: Ottawa, Delaware, Craig, Rogers, Tulsa, Creek, Lincoln, Oklahoma, Canadian, Caddo, Blaine, Custer, Washita, and Beckham.

We are a not-for profit organization made up of volunteers who are dedicated to the promotion and preservation of Route 66. As spelled out in our bylaws, the Association is managed by a team of elected officers.

The Association also takes part in cooperative efforts that promote the Route's interests on a national level. The Association's activities include coordination of all statewide efforts, development of events statewide and economic development activities, and provide assistance to communities along the Route. The Association publishes a periodic newsletter that is mailed to our membership located around the world. We also publish our Official Oklahoma Route 66 Association Trip Guide—a large-format driving aid that is updated every year and is filled with information and maps to inform and enhance the Route 66 experience.

We serve as the non-governmental body that coordinates the statewide economic development, enhancement, improvement, preservation, and recognition of U.S. Route 66 in Oklahoma. In keeping with our mandate, we generate whatever finances and pressures we can to save Route 66 landmarks from decay or destruction.

As a group we strive to provide technical assistance and guidance to communities along the Route that may wish to develop Route 66 projects. We also assist in identifying sites of historic or cultural significance along the Route and promote preservation.

*Comfortable Rooms at Budget Rates*

**Western Motel**

315 N E. Hwy 66  
Sayre, OK 73662  
Tel: (580) 928-3353  
Fax: (580) 928-9343

*"Trust in the Lord with all your heart"*

Priti  
Owner

1-40 Exit 25  
on Route 66

Apple Tree Antique Gallery  
Furniture, Glassware, Collectibles  
Memorabilia & Gotta Haves

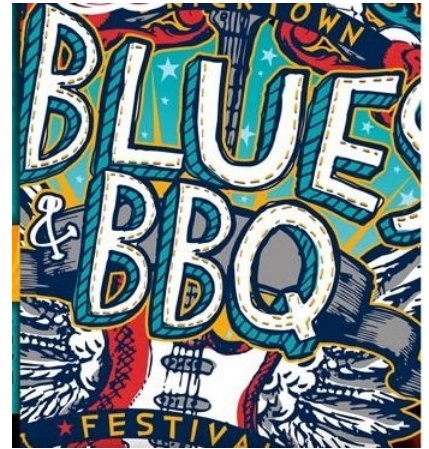
Carol & Sherry  
Owners

Apple Tree Antique Gallery  
6740 NW 39th Expressway  
Bethany, Okla. 73008

785-885-8800  
appletree@coxinet.net

## Oklahoma City—Bricktown Blues & BBQ Festival

The Bricktown Blues & BBQ Festival has become a beloved annual tradition in Oklahoma City. Held in the heart of downtown each June, the festival features live performances by many popular area bands throughout the two-day event. Bring all your friends and family out to enjoy delicious, smoked barbecue, and ice cold beverages. Vendors will also be on-site with souvenir hats, t-shirts and more. The artist line-up changes each year, but past musicians include Otis Watkins, Scott Keeton, Ike Lamb and the Creepers, the Bluehemians, and Dan Danger and the Danger Zone. Head out to the Bricktown Blues & BBQ Festival for a free weekend of great food and music. Jun 20, 2014 to Jun 21, 2014



## Revvin' It Up on Route 66 Car Show & Cruise



Revvin' It Up on Route 66 in Miami will feature a car show and cruise along Oklahoma's longest Main Street on Route 66. Entertainment, food and live music will be available throughout the day. Raffles for prizes will be held throughout the day, and the first 100 cars to register for the event will be given a dash plaque. Make plans to attend this family event in Miami.

Jun 21, 2014

## Edmond Liberty Fest



Named by CNN and USA Today as one of the top ten July 4th festivals in the United States, LibertyFest in Edmond has something for everyone. Join in the fun and celebrate freedom with this event, which has been hosted in Edmond more than 40 years. This citywide festival features a variety of great, family-oriented events including a concert, road rally, kite fest, rodeo, car show, food fest, parade, fireworks and entertainment.

Thu, June 26: Concert in the Park at UCO

Sat, June 28: Car Show, Kite Fest, Pageant

Sun, June 29: Kite Fest, Rodeo, A Taste of Edmond and Road Rally

Fri, July 4: Parade, Park Fest at UCO and Fireworks

## 2014 OKLAHOMA ROUTE 66

### ASSOCIATION SCHEDULE OF BOARD MEETINGS



April 27, 2014 1:30pm  
Bethany City Hall,  
6700 NW 36th Street,  
Bethany, OK



July 13, 2014 1:30pm  
J.M. Davis Gun and Historical  
Museum, 333 N. J.M.  
Davis Blvd, Claremore, OK



October 19, 2014 1:30 pm  
OK Tourism Information Center  
122nd and I-35, Oklahoma City,  
OK

# EASTERN OKLAHOMA



Oklahoma Route 66 Business Directory

## AFTON

### Grand Country Lakeside RV Park

55015 E 270 Road  
Afton, OK 74331  
918-257-5164

### Town of Afton

PO Box 250  
Afton, OK 74331

### Afton Station & Route 66 Packards

12 SE First St  
Afton, OK 74331  
918-257-4044

## Bristow

### Granny's Emporium

709A S Roland  
Hwy 66 West  
Bristow, OK 74010

918-367-1727

### Hummel Hideaway Homes

424 S Rowland  
Bristow, OK 74010  
918-519-3510

### KREK

116 West 12th Avenue  
Bristow, OK 74010  
918-367-5501

## CATOOSA

### Catoosa Chamber

PO Box 297  
650 S Cherokee Suite  
C

Catoosa, OK 74015  
918-266-6042

### Catoosa Historical Society

207 N Cherokee  
PO Box 738  
Catoosa, OK 74015  
918-266-6592

## DW Correll Museum

19934 E Pine  
Catoosa, OK 74015  
918-226-3612

### Hampton Inn & Suites

100 McNabb Field  
Road  
Catoosa, OK 74015  
918-739-3939

### Molly's Landing

3700N. Highway 66  
P.O. Box 838  
Catoosa, OK 74015  
918-266-7853

### The Blue Whale

2680 Highway 66  
Catoosa, OK 74015  
918-694-7390

## CHANDLER

### Bell Cow Ranch Cabins

341070 E. 890 Road  
Chandler, OK 74834  
405-258-0034

### Boom-A-Rang Diner

912 Manvel Avenue  
Chandler, OK 74834  
Chandler Area  
Chamber  
400 E Route 66  
Chandler, OK 74834  
405-258-0673

### Community Thrift Shop

of Chandler  
921 Manvel Ave  
Chandler, OK 74834  
405-258-8258

### Econo Lodge

600 N. Price Avenue  
Chandler, OK 74834  
405-258-2131

## LD's Automotive

PO Box 486  
Chandler, OK 74834  
405-258-2120

### Lincoln County Historical Society

719 Manvel  
Chandler, OK 74834  
405-258-2425

### Lincoln Motel

740 E 1st Street  
Chandler, OK 74834  
405-258-0200

### McJerry's

### Route 66 Gallery

310 Manvel Ave  
Chandler, OK 74834  
903-467-6384

### Oak Glen RV Park

347203 E Highway 66  
Chandler, OK 74834  
405-258-2994

### Randy Bowen

### Chevrolet

1201 Manvel Ave  
Chandler, OK 74834  
405-258-0055

### Rt. 66 Interpretive Center

400 E Route 66  
Chandler, OK 74834  
405-258-1300

### VFW Post 1719

900726 S 3420 Rd  
Chandler, OK 74834  
405-258-3050

## CHELSEA

### Chelsea Motor Inn

321 E Layton  
Chelsea, OK 74016  
918-789-3437  
918-789-2001

## Main Street Diner

251 W Sixth  
Chelsea, OK 74016  
918-789-2001

## CLAREMORE

### Boom-a-rang Diner

302 W Will Rogers  
Blvd.

Claremore, OK  
74017

918-342-0601

### Visit Claremore

419 W Will Rogers  
Blvd

Claremore, OK 74017

918-341-8688

### JM Davis Gun

### Museum

333 N Lynn Riggs  
Blvd

Claremore, OK 74018

918-341-5707

### Route 66 Sports Bar

940 S Lynn Riggs  
Blvd.

Claremore, OK 74017

918-342-4033

### Shepherd's Cross

16752 E 450 Road  
Claremore, OK 74017

918-231-6947

### The Nut House, LLC

2667 S Highway 66  
Claremore, OK  
74109

918-2661604

### Will Rogers

### Memorial

1720 W Will Rogers  
Blvd

Claremore, OK 74017

918-343-8118



# EASTERN OKLAHOMA

## Will Rogers Motor Inn

940 South Highway 66  
Claremore, OK 74017  
918-341-4410

## COMMERCE

**Allen's Fillin Station**  
101 S Main  
Commerce, OK 74363  
918-533-1151

## DAVENPORT

**Central Cellular**  
PO Box 789  
Davenport, OK 74026  
918-377-2262

## Central OK Telephone CO

PO Box 789  
Davenport, OK 74026  
800-252-8854

## Dan's Bar-B-Que

PO Box 561  
Davenport, OK 74026  
918-377-2288

## Davenport Chamber

PO Box 66  
Davenport, OK 74026  
800-252-8854

## Early Bird Cafe

615 Highway 66  
Davenport, OK 74026  
918-377-2209

## Garwooly's

1023 N Broadway  
Davenport, OK 74026  
918-377-2230

## Marketplace Insurance

203 Broadway  
Davenport, OK 74026  
918-377-2355

## DEPEW

## KELLYVILLE

Mountain Creek Lodge  
Of Oklahoma  
21301 W 191 Street  
Kellyville, OK 74030

## MIAMI

### Chapters

31 N Main St  
Miami, OK 74354  
918-540-0468

### Coleman Theatre

103 N Main St  
Miami, OK 74354  
918-540-2425

### Miami CVB

101 N Main St  
Miami, OK 74354  
918-542-4435

### Ottawa County

### Historical Society/ Dobson Museum

110 A SW  
Miami, OK 74355  
918-542-5388

### Pizza Hut Express

101 A St NW  
Miami OK 74354  
(918) 540-2471

### Pizza Hut

1320 N Main St  
Miami OK 74354  
918-542-6642

### Stonehill Grill

1220 N Main Street  
Miami, OK 74354  
918-542-1679

### Waylan's Ku-Ku Burger

915 N Main St  
Miami, OK  
918-542-1696

## SAPULPA

## American Heritage Bank

2 S Main Street  
PO Box 1408  
Sapulpa, OK 74066  
918-227-8228

## Boom-a-rang Diner

126 E Dewey  
Sapulpa, OK 74066  
918-224-6200

## Copper Oaks B&B

7806 Hwy 97  
Sapulpa, OK 74066  
918-224-3986

## Creek County Cycles

619 Mission Street  
Sapulpa, OK 74066  
918-227-9867

## Dewey Street Market

209 E Dewey  
Sapulpa, OK 74066  
918-227-4508

## First United Bank & Trust

PO Box 1290  
Sapulpa, OK 74067  
918-224-5151

## Freddie's BBQ & Steakhouse

1425 New Sapulpa Rd  
Sapulpa, OK 74067  
918-224-4301

## Grand Designs

11 N. Water Street  
Sapulpa, OK 74066  
918-224-4900

## Happy Burger

215 N Mission  
Sapulpa, OK 74066  
918-224-7750

## Hickory House BBQ

262 N Mission  
Sapulpa, OK 74066  
918-224-7830

## Miss Scarlet's Tea Room

320 S Main St.  
Sapulpa, OK  
918-512-8444

## R&T Express Grocery

100 W Dewey  
Sapulpa, OK 74066  
918-227-2021

## Route 66 Flowers & Gifts

114 E Dewey  
Sapulpa, OK 74066  
918-224-0254

## Route 66

### Frame Shoppe

110 E Dewey  
Sapulpa, OK 74066  
918-224-1767

### Sapulpa Chamber

101 E Dewey  
Sapulpa, OK 74066  
918-224-0170

### Sapulpa Community Theatre

124 S Water  
Sapulpa, OK 74066  
918-227-2169

### Sapulpa Historical Society

100 E Lee Ave PO Box 278

Sapulpa, OK 74066  
918-224-4871

### Sapulpa Main Street

101 E Dewey  
Sapulpa, OK 74066  
918-224-5709

### Sapulpa Super 8 Motel

1505 New Sapulpa Road  
Sapulpa, OK 74066  
918-227-3300

### Sapulpa Trolley & Rail

701 E Dewey  
Sapulpa, OK 74066  
918-224-1515

# EASTERN OKLAHOMA



## Tulsa-Sapulpa Union Railway

701 E Dewey  
Sapulpa, OK 74066  
918-224-1515

## STROUD

### Clovis Insurance Agency

PO Box 270  
Stroud, OK 74079  
918-968-2552

### P & G Originals

3752 E Highway 66  
Stroud, OK  
918-290-9779

### Shoe Tree Trading Post

3750 E Hwy 6 74834  
405-258-9141

### Sisters

### Consignments, ETC

307 W Main  
Stroud, OK 74079  
918-987-1747

### Stable Ridge Winery & Vineyards

2016 Hwy 66 West  
Stroud, OK 74079  
918-968-2568

### Stroud Chamber of Commerce

216 W Main Street  
Stroud, OK 74079  
918-968-3321

### Territory Cellars

1821 N Highway 99  
Stroud, OK 74079  
918-968-2575

## TULSA

**Apertures Photo**  
1936 S Harvard Ave.

Tulsa, OK 74112  
918-742-0500

### Best Western Tulsa Inn

3212 S 79 E Aveune  
Tulsa, OK 74145  
918-858-2100

### Desert Hills Motel

5220 E 11th St  
Tulsa, OK 74112  
918-834-3311

### EMF, Inc.

1125 S 110 E Avenue  
Tulsa, OK 74128  
918-437-7470

### Generations

**Antique Mall**  
4810 E 11th Street  
Tulsa, OK 74112  
918-834-7577

### Lyon's Indian Store

111 S Detroit  
Tulsa, OK  
918-582-6372

### Ollie's Station Restaurant

4070 Southwest Blvd  
Tulsa, OK 74107  
918-446-0524

### Paintmaster Collision

5950 E 11th St  
Tulsa, OK 74112  
918-836-8668

### Red Fork Main Street

PO Box 570978  
Tulsa, OK 74157  
918-445-4457

### 66 Guitar Shop

5725 E Admiral Place  
Tulsa, OK 74115  
918-831-9000

### Route 66 Village

3770 SW Blvd.  
PO Box 57166

Tulsa, OK 74157  
918-446-4650

### Sandusky Ave Christian Church

1101 S Sandusky Ave  
Tulsa, OK 74112-5219  
918-834-4427

### The Campbell Hotel

2636 E 11th Street  
**Tulsa, OK 74104**

### Tulsa Regional Early Ford V8 Club

of America  
PO Box 4109

Tulsa, OK 74159

### Tulsa Convention & Visitors Bureau

1 W 3rd  
Suite 100  
Tulsa, OK 74103  
918-560-0229

## VINITA

### Holiday Inn Express

232 S 7th  
Vinita, OK 74301  
918-256-4900

### Little Tin Barn

433055 E Hwy 66  
Vinita, OK 74301  
918-256-5415

### Park Hill Motel & RV Park

438415 E Hwy 60  
Vinita, OK 74301  
918-256-5511

### Vinita Area Chamber

105 W Delaware  
Vinita, OK 74301  
918-256-7133

## WARWICK

**Seaba Station &  
Motorcycle Museum**  
336992 E Highway 66

Warwick, OK

## WELLSTON ELSEWHERE

### Ariston Café

413 Old Route 66  
Litchfield, IL 62056  
217-324-2023

### Blue Swallow Motel

815 E. Rt. 66 Blvd.  
Tucumcari, NM 88401  
575-461-9849

### Carousel Advertising

512 Lou Allard Drive  
Drumright, OK 74030  
Cushing, OK 74023  
918-798-6176

### Cozy Dog Drive Inn

2935 S 6th St  
Springfield, IL 62703

### Missouri Neon

3160 W Kearney St.  
Springfield, MO  
800-788-1778

### Route 66 Sodas, LLC

**Route 66 Root Beer**  
Post Office Box 766  
Lebanon, MO 65536-  
0766  
417-588-4466



# WESTERN OKLAHOMA



Oklahoma Route 66 Business Directory

## ARCADIA

**Arcadia Historical & Preservation Society**  
Box 134

Arcadia, OK 73007  
405-396-2398

**Arcadia Tag & Title**  
PO Box 253  
Arcadia, OK 73007  
405-396-0824

### Pops

660 W Highway 66  
Arcadia, OK 73007  
405-928-7677

## BETHANY

### Apple Tree

**Antique Gallery**  
6740 NW 39th Express-  
way

Bethany, OK 73008  
405-495-0602

**Bethany Antique Mall**  
3909 N College Ave  
Bethany, OK 73008  
405-495-0602

**Bethany Improvement Foundation**  
3737 N College #224  
Bethany, OK 73008  
405-312-0155

**Boom-a-Rang Diner**  
6315 NW 39th Express-  
way

Bethany, OK 73008  
405-495-9100

**City of Bethany**  
6700 NW 36th St  
Bethany, OK 73008  
405-789-5005  
405-495-7091

**Holiday Inn Express**  
7840 NW 39th Express-  
way  
Bethany, OK 73008  
405-787-6262

## Native America Gallery and Gifts

3823 N College  
Bethany, OK 73008  
405-789-4300  
405-787

## Simmons Auto Service

6719 N.W. 36th  
Bethany, OK 73008  
405-789-9078-3933

## CALUMET

### Bethany Kars

24825 W Hwy 66  
Calumet, OK 73014  
405-615-3188

## Cherokee Trading Post

301 S Walbaum Road  
Calumet, OK 73014  
405-884-2502

## CLINTON

### Clinton Chamber

101 S 4th St  
Clinton, OK 73601  
580-323-2222

## OK Route 66 Museum

2229 W Gary Blvd  
Clinton, OK 73601  
580-323-7866

## EDMOND

### Anderson Productions

PO Box 3461  
Edmond, OK 73083  
405-341-1646

### Edmond CVB

PO Box 2970  
Edmond, OK 73083  
405-216-7781

### Edmond Historical Society

431 S Blvd  
Edmond, OK 73034  
405-340-0078



# Membership Application

To join the Association or renew an existing membership, please fill out this form, include your check or money order (in US funds, on a US-based bank), and mail to the address below. We also accept MasterCard and Visa for your convenience. NOTE: A \$20 recovery fee will be charged for bad checks.

## Type of annual membership (check one)

- Individual ..... \$20/year  
 Family ..... \$30/year  
 Kids' Club ..... \$10/year  
 \* Overseas ..... \$30/year  
 \* Business ..... \$49/year

- Higher fee pays for shipping on newsletters

## Benefactor

- Bronze \$200/year  Silver \$300/year  Gold \$500/year  Platinum \$1000/year  Titanium \$2000/year

Name \_\_\_\_\_

Business name \_\_\_\_\_

Child's name for Kids' Club \_\_\_\_\_

Address \_\_\_\_\_

Home phone \_\_\_\_\_

Business phone \_\_\_\_\_

Fax \_\_\_\_\_

Email \_\_\_\_\_

Credit card type, # and expiration \_\_\_\_\_

Signature \_\_\_\_\_

*Signature is necessary for credit card payment.*



Oklahoma Route 66 Association

PO Box 446

Chandler, OK 74834

405-258-0008

[www.oklahomaroute66.com](http://www.oklahomaroute66.com)



# WESTERN OKLAHOMA

**BETHANY KARS**  
*Bethany Kars*  
 64-87 Chevrolet El Camino's  
*Your El Camino Headquarters*  
**Phillip R. Swartz**  
 SHOWN BY APPOINTMENT ONLY!  
 PH# 405-615-3188  
 24825 Hwy 66 W, Calumet, OK. 73014  
 EMAIL -bethanykars@pdi.net  
 WEBSITE -bethanykars.net

**Fairfield Inn and Suites**  
 301 Meline Drive  
 Edmond, OK 73034  
 405-341-4818  
**Pin EFX, LLC**  
 3801 Pawnee Circle  
 Edmond, OK 73013  
 405-623-9125

**Fort Reno Visitors Center**  
 7107 W Cheyenne St  
 El Reno, OK 73036  
 405-262-3987  
**Johnnie's Grill**  
 301 S Rock Island  
 El Reno, OK 73036

**Elk City**  
**Elk City Chamber of Commerce**  
 PO Box 972  
 Elk City, OK 73648  
 580-225-0207

**Larry Nance Photography**  
 113 S Bickford  
 El Reno, OK 73036  
 405-262-3975

**National Route 66 Museum**  
 2717 W Third  
 Elk City, OK 73648  
 580-225-3542

**ERICK**  
**Erick Chamber of Commerce**  
 PO Box 1232  
 Erick, OK 73645  
 580-526-3332

**KOA Kampgrounds**  
 I-40 Exit 50  
 Elk City, OK 73644  
 580-592-4409

**Roger Miller Museum**  
 101 E Roger Miller Blvd  
 Erick, OK 73645  
 580-526-3833

## Our ads mean business!



Newsletter advertising costs per issue ...

Members	Non-members
Business card: \$7.50	Business card: \$15
¼ page: \$15	¼ page: \$30
½ page: \$20	½ page: \$40
Full Page: \$30	Full page: \$60

Business members get one free business card ad upon joining, so if you are a business member and have not yet submitted a card, Please be sure and send us one!

## EL RENO

**Bill & Clara's Home and Ranch**  
 2701 W 10th  
 El Reno, OK 73036  
 405-262-6651

**CDT Synthetics**  
 1804 Mulberry Lane  
 El Reno, OK 73036  
 405-831-8741

**El Reno Chamber**  
 206 N Bickford  
 El Reno, OK 73036  
 405-262-1188

**El Reno CVB**  
 110 S Bickford  
 El Reno, OK 73036  
 405-262-8687

**HYDRO**  
**Nutopia Nuts N'More**  
 206 W Main Street  
 Hydro, OK 73048  
 405-663-2330

**LUTHER**  
**The Boundary on 66**  
 16001 E Hwy 66  
 Luther, OK 73054

**OKLAHOMA CITY**  
**Collision Clinic**  
 444 W Wilshire  
 Oklahoma City, OK  
 405-848-7035  
**Lincoln Inn Express**  
 5405 N Lincoln Blvd  
 Oklahoma City, OK 73105  
 405-528-1341



# WESTERN OKLAHOMA



**Vorhees & Vorhees PC**  
7701 S Western Ave Suite 201  
Oklahoma City, OK 73139  
405-682-5800

**Will Rogers Theatre**  
4322 N Western  
Oklahoma City, OK 73118  
405-525-2294

## SAYRE

**Stardust Restaurant**  
611 NE Highway 66  
Sayre, OK 73662  
580-928-2277

**The Brick Coffee House**  
109 E Main Street  
Sayre, OK 73662  
580-928-8949

**Western Motel**  
315 NE Hwy 66  
Sayre, OK 73662  
580-928-3353

## TEXOLA

## YUKON

**Mercantile Store**  
430 West Main  
Yukon, OK 73099  
405-642-8614

**Yukon Chamber of  
Commerce**  
510 Elm  
Yukon, OK 73099  
405-354-3567

## WARR ACRES

## WEATHERFORD

**Best Western Mark Motel**  
525 E Main  
Weatherford, OK 73096  
580-772-3325

## Comfort Inn & Suites

1311 E Main  
Weatherford, OK 73096

## Doc's Longhorn Trading Post

1511 E Main  
Weatherford, OK 73096  
580-772-2277

## Downtown Diner

123 W Main  
Weatherford, OK 73096  
580-744-1234

## Heartland Museum

1600 S Frontage Rd  
Weatherford, OK 73096  
580-774-2212

## Route 66 Thunderbirds

2121 E Main  
Weatherford, OK 73096  
580-772-6666

## Stafford Air & Space Museum

3000 Logan Road  
Weatherford, OK 73096  
580-772-5871

## Weatherford Chamber

522 W Rainey Room 224  
Weatherford, OK 74096  
580-772-7744

## SISTER ASSOCIATIONS

### Route 66 Association of Illinois

110 W Howard St  
Pontiac, IL 61764  
[www.il66assoc.org](http://www.il66assoc.org)

### Route 66 Association of Missouri

PO Box 8117  
St Louis, MO 63156  
[www.missouri66.org](http://www.missouri66.org)

### Route 66 Association of Kansas

PO Box 66  
Riverton, KS 66770  
620-848-3330

### Kansas Historic Route 66

PO Box 66  
Baxter Springs, KS 66713  
620-856-2066

## Old Route 66 Association of Texas

105 E. 12th Street  
Shamrock, TX 79079  
806-779-2225  
[www.texasroute66.org](http://www.texasroute66.org)

## New Mexico Route 66 Association

14305 Central Ave NW  
Albuquerque, NM 87121  
505-831-6317  
[www.rt66nm.org](http://www.rt66nm.org)

## Historic Route 66 Association of Arizona

PO Box 66  
Kingman, AZ 86402  
928-753-5001  
[www.azrt66.com](http://www.azrt66.com)

## California Historic Route 66 Association

PO Box 64  
Azusa, CA 91702-0064  
[Www.route66ca.org](http://www.route66ca.org)

## Dutch Route 66 Association

<http://www.rte66.nl>

## Route 66 Association Italy

<http://www.lastrada66.com>

## Canadian Route 66 Association

PO Box 81123  
Burnaby, BC V5H4K2  
Canada  
604-341-6634  
[Www.route66.ca](http://www.route66.ca)

## National Historic Route 66 Federation

P O Box 1848  
Lake Arrowhead, CA 92352-1848  
Phone: 909-336-6131  
Fax: 909-336-1039



## OK Route 66 Association

PO Box 446  
Chandler, OK 74834  
405-258-0008  
www.oklahomaroute66.com

BULK RATE  
US POSTAGE PAID  
CHANDLER, OK  
74834-3851  
PERMIT #66

On The Road Issue 10 March 2014

## Upcoming Events

- |                   |   |
|-------------------|---|
| <b>Apr. 2</b>     | <b>LCHS &amp; Museum of Piioneer History Spaghetti Luncheon, Chandler, OK</b> |
| <b>Apr. 11-12</b> | <b>SpringFest Garden Market &amp; Festival , Tulsa, OK</b>                    |
| <b>Apr 11-13</b>  | <b>Southwest Street Rod Nationals , Oklahoma City, OK</b>                     |
| <b>Apr 22-27</b>  | <b>Festival of the Arts , Oklahoma City, OK</b>                               |
| <b>Apr. 25-26</b> | <b>Woolly Weekend at Shepherd's Cross , Claremore, OK</b>                     |
| <b>Apr. 26</b>    | <b>Miami Route 66 Cruise Night , Miami, OK</b>                                |
| <b>Apr. 26</b>    | <b>Fort Reno Tombstone Tales , Fort Reno, OK</b>                              |
| <b>Apr. 27</b>    | <b>OK Rt. 66 Association—Quarterly Board Meeting, Bethany, OK</b>             |

*Mark Your  
Calendars!*

This Newsletter is printed by: **Kinkos** 101 E Second Street, Edmond, OK